

# NEWTON WONDER

The Magazine and Website for the Community of Newton St Cyres  
70p February 2022



**CLLR. MARGARET SQUIRES  
40 YEARS OF PUBLIC SERVICE**

[www.newtonwonder.net](http://www.newtonwonder.net)

# QUICKE'S

EST. 1540

SPRING HAS ARRIVED AT QUICKE'S



Whether you're preparing a picnic or planning a get together, make every moment this spring truly delicious. Step inside the Cheese Box to discover a stunning selection of cheeses and accompaniments. From the finest cheeses, charcuterie and crackers to refreshing beers, ciders and wines. Or why not pick up one of our pizza boxes containing everything you need to conjure up a simple yet spectacular supper.

## CHEESE COUNTER

Alongside our own Quicke's cheese, we also stock other cheeses in our counter including Bries, Blues and Soft Goats cheese.

## OPENING TIMES

Monday – Friday 10am – 4pm

Ask for a loyalty card when making a purchase and have a wedge on us with your 6th purchase. T&C's apply.

Home Farm, Newton St Cyres, Exeter, Devon, EX5 5AY

[www.quickes.co.uk](http://www.quickes.co.uk) · 01392 851000

## 10% OFF WHEN YOU SHOP AT THE CHEESE BOX

10% off when you spend £5 or more on any items. Please present the voucher when paying.

Only one voucher per transaction. Valid for the month of March 2022 only.

To validate please fill in postcode.....

## **Cover**

Local politicians' work is not glamorous and we often have little idea of what is involved. The cover for this month's Newton Wonder is Councillor Margaret Squires. A tireless worker for the people of Devon, Ann Quon Cordingley's profile is on page 28.

## **Do You Remember....?**

Nick and Viv Henderson have taken on the task of visiting the Devon Heritage Centre to research this popular item in the Newton Wonder. As they were unable to gain long enough access in January to produce the February article we have included it in the current issue. But don't worry, we have included March as well.

As I was looking through the memories from February and March of the years ending in the number 2 for the last fifty years I was not surprised but struck by the diversity of activity groups, fun and social events that have happened over the last fifty years in the village. Many of these have disappeared and new ones have been established. I sometimes wonder whether there is a case for reviving or re-creating some of the activities.

## **The Platinum Jubilee**

Are you planning a street party or some other activity to celebrate the longest serving monarch in history? If so please let us know about it and send us some pictures for inclusion in the July Newton Wonder. On Sunday of the Jubilee weekend, June 5th, a village lunch is being planned. This will be an informal, low cost event where the emphasis will be on participation. The organisation is flexible and the progress of the steering group is available on page 9. If you would like to contribute in any way at all please get in touch. The details of how are on page 9.

## **The Weather**

After 26 years James Walters would like to hand on his rain gauge to a younger weather watcher. It is not a very onerous task. The data is recorded on a spreadsheet and sent to the editor each month. If you would like to ensure the continuation of this informative material please get in touch with me either at [editor@newtonwonder.net](mailto:editor@newtonwonder.net) or on 851269.

## PARISH COUNCIL REPORT - February 2021

The meeting, held on Thursday 3<sup>rd</sup> February, was attended by seven Councillors, the Parish Clerk, the Mid Devon District Councillor, Graeme Barnell, the County Councillor, Margaret Squires, and nine members of the public.

### Planning

Mid Devon District Council has sent out a consultation document in response to a planning application for the development of land near Creedy Bridge. This would include 257 dwellings as well as a primary school and pitches for travellers. It was agreed that the Parish Clerk would draft a response expressing our concerns about increased traffic on the A377, and inadequate provision for cycling and park and ride facilities. The District Councillor, Graeme Barnell, suggested that a Parish Councillor should attend the Planning Committee when this application is discussed.

Mid Devon District Council are also seeking consultation in the formulation of a new local plan. Parish Councils have been invited to attend Zoom meetings and members of the public can take part by visiting this website: <https://www.middevon.gov.uk/residents/planning-policy/plan-mid-devon/> If they want to be part of the consultation, then hurry as consultation finishes on 28<sup>th</sup> March.

Crediton Town Council are formulating a local plan which may impinge on Newton St Cyres. Graeme Barnell and two Parish Councillors hope to meet with the head of planning to discuss this.

Newton St Cyres Parish Council is also formulating its own local plan. The first step in this is the housing needs survey, which parishioners should already have received. The Council is now setting up a steering group to take the plan forward.

### Good and Bad News on Council Tax

Mid Devon District Council has been obliged to put up its share of the council tax by the maximum amount. However, central government has awarded a £150 non-repayable rebate per household for households in tax bands A-D plus. This is to alleviate problems arising from increased fuel bills. Some of the money allocated by central government will be awarded on a discretionary basis for those who do not qualify for the above payment.

### Environmental Issues

The Newton Environmental Wellbeing Group are organising a Community Forum on 2<sup>nd</sup> April to discuss energy, food security and health issues arising from



climate change. This will be an opportunity for members of the public to say what action they would like to see taken to mitigate the effects of climate change. There will be a presentation in the Parish Hall on 23<sup>rd</sup> March to introduce the forum. The Parish Council awarded a grant of £100 to support the events.

## Road Warden Scheme

Temporary storage has been found for the materials needed to repair minor potholes. However, in the longer term, the council is looking for somewhere to store a small trailer that would contain all the equipment and materials. If you can help can, please contact the Parish Clerk. The Council voted to purchase the trailer at a cost of approximately £2,000.

## Station Road

There has been a report that brambles are overgrowing Station Road. It was agreed that, at present, this was not a significant problem. The Devon County Councillor recently drove along Station Road with the Neighbourhood Highways Officer, who expressed concern that the vehicles now parked there are obscuring visibility for other road users and pedestrians. The Council would like to remind parishioners of rule 243 of the Highway Code. This lists places that you must not park including near a school entrance, opposite or within 10 metres (32 feet) of a junction, except in an authorised parking space, or near the brow of a hill or hump bridge.

## Other Parish Business

- Airband, who are responsible for installing faster broadband to Devon, have appointed a community liaison executive. She will be liaising with Parish Councils to discuss the roll-out of fibre in their areas,
- The Council is investigating ways to celebrate the Queen's Platinum Jubilee on 5<sup>th</sup> June. This includes a 'mini-Revels' and a commemorative mug for school children.
- Blocked drains at Rewe Cross have been reported to Devon highways. They have yet to be cleared.

The next meeting of the Parish Council will be held in the Parish Hall on **Thursday 3<sup>rd</sup> March 2021** at 7pm. Members of the public are welcome. Alternatively, if members of the public wish issues to be raised in council meetings, they can contact councillors in the usual way. There will also be a Parish Surgery at the Coffee Morning to be held on **Saturday 12<sup>th</sup> March** in the Parish Hall.

Liz Ouldrige  
Press Officer

## Thoughts for December from Peter Cordingley

Congratulations to the fine people at Crediton's The Bookery on being selected as a regional finalist in the 2022 Independent Bookshop of the Year awards. If you ask me, it's an open book; they'll walk it! Nobody would ever suggest that Crediton High Street is rowdy or busy, but once you step inside The Bookery, you enter another dimension, an oasis of peacefulness where the walls are packed with a wondrous selection of books and sundry odds and ends. It's the kind of bookshop that all local bookshops should be like.

I have to say that Crediton High Street was not among the places that I had expected to find a work by one of my favourite authors, Haruki Murakami. But there it was, quickly located by a staff member and just as swiftly purchased. If The Bookery doesn't stock it, they'll find it for you. That's called personal service, and you find it everywhere in Crediton, with a smile for no extra charge.

There's something similar about Adams Home Hardware on the other side of the street. That place is an Aladdin's Cave, packed with everything you can imagine, from enough paint to do every room in Buckingham Palace twice over to a single sticky hook to replace the one that fell down yesterday, taking a towel with it. Our son loves the place. He says "If you can't find what you want at Adams, it's because it's not been invented yet!" For those who don't know it, Adams has been trading for more than 100 years and is still in the hands of the same family, by the name of ... well, Adams, of course. Outstanding!

What I'm getting at here is that The Bookery, Adams and all the other independent traders up and down the High Street and in the nooks and crannies behind make Crediton a very special town. We fell in love with it when we settled in this part of the world three years ago and these days rarely go into Exeter to shop unless we have to.

Stand on the High Street and look right and left. How many "national" names can you see? There's Boots, of course, and Lloyds and Costa and the Coop. Are there others? Probably, but they're swamped by the independents.

Is there a better fruit & veg shop in the land than Four Seasons? I doubt it. Or a friendlier purveyor of wines and spirits than Bruce (no, he's not Australian), who runs (and owns, I assume) Grape and Grain. I was there for gin, but lingered in wonder at how a tiny place like that could have such a clever and dazzling selection of wines. And what about Ashton's Coffee Lounge, on the square, with what a friend calls "coffee to cross the country for". (Not sure about the portraits of the Queen and Prince Philip, but that's perhaps for another day.)

Oh, there's lots more (Cox the butchers, Oliver's the bakery, Divine the florists among them), so apologies if space precludes me from nodding in their direction. These places are nearly all family owned and have been around for generations. They deserve your custom. They are exceptional, and they make Crediton the special place it is.

## RECREATION GROUND CLUB

Spring really is in the air, with primroses, snowdrops, crocuses and a hellebore showing colour in the garden, so I really feel we are getting close to better weather.

Now to the sports. In March we have one more Skittles Cup evening, so the rumours look to be right and there won't be any League games before September.

Darts: the ladies' season ends on 16th March with their last game at the Rec on the 2<sup>nd</sup>. The Men's League, however, goes on until 12th May with their finals night on 27th May at the Rec.

The football bookings for March need several more confirmations, but I'm sure these will come through soon. It is a little frustrating that the League only give a few days to confirm some games, which makes planning more complicated. We know games are on the way as the season isn't expected to finish until mid May,

With the latest news from the powers-that-be, it is beginning to look like we may get back to what in the past was our norm. The summer months in the diary look good as all the regular cricket teams have now confirmed their required dates, with the first date required being on 20th April. Fingers crossed that the weather is suitable by then.

We have a children's party booked in and a couple of more enquires pending confirmation.

Our next committee meeting will be at 7.30 on Sunday 3rd April at the Club House.

Wendy Lewis

# Newton St Cyres Tennis Club

Despite adverse weather conditions, we have kept playing all through the winter. We have coaching sessions running on Saturday mornings with coach Jon Wills for both members and non-members. There are still a few places left in the Beginners' session, so please do contact Jon on 07555 595 747 or [jrw23@hotmail.com](mailto:jrw23@hotmail.com) if you are interested.

We also have some slots left for Junior coaching starting in March on Wednesday evenings, so contact him or Laura Leigh on 01647 24259 if your children are interested.

Our AGM is at the end of March, and membership renewals also take place in March, so it's a good time to consider trying some taster sessions before making a decision about whether to join! All information about the Club is on our website [www.newtonstcyrestennisclub.co.uk](http://www.newtonstcyrestennisclub.co.uk)

Sally Baldwin

## Fancy playing tennis again after a break?

Not sure if you are good enough to join a club?

Come to a Rusty Rackets session at Newton St Cyres Tennis Club.

Saturdays 9-10am (10 am-12pm if more time wanted).

Coach Jon Wills will facilitate play and advise you on your game.

Maximum 6 people per session, £8 for one hour.

Please contact Jon on:

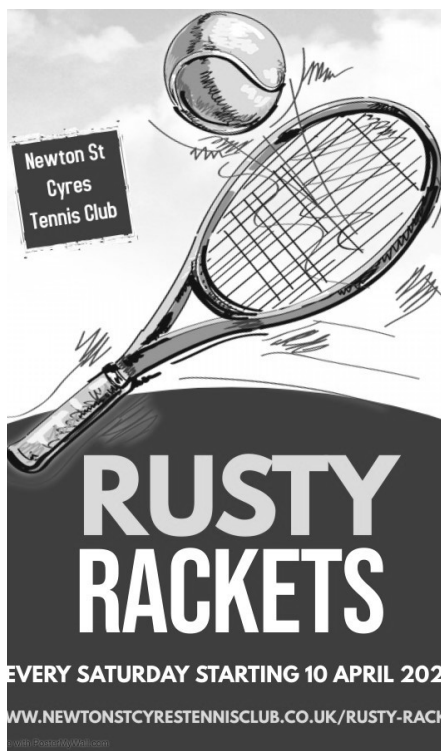
[jrw23@hotmail.com](mailto:jrw23@hotmail.com),

tel. 07555 595747

Or Laura Leigh on:

[winstodehouse@gmail.com](mailto:winstodehouse@gmail.com),

tel. 01647 24259



# Queen`s Platinum Jubilee Lunch

Sunday 5th June 2022 Noon 'til 4pm

A small group met by Zoom on Thursday 17th February to see if there would be a call for a Village Get Together to celebrate Her Majesty's Seventy Years on the Throne. The consensus was that it would be appropriate for the village to get together for an informal social event.

The purpose of the event is to involve the whole village and the idea is for a **“street party celebration” at the Rec on Sunday 5<sup>th</sup> June 2022, 12pm till 4pm.** Costs will be kept low by participants bringing their own tables, chairs, picnic blankets, food (no BBQ's etc.), etc. The Rec bar will be open.

Entertainment will be provided by the use of “Open Mic” whereby participants could take over the system to entertain those present. Graham Scopes(Cllr. and Events Organiser) will bring and set up his mic and speakers and manage this side of the event.

In addition, we will look to have some fun sports. Eric Fee will present ideas at the next meeting. Sean Moon, magician, will be approached to ascertain affordability.

The Church will be selling teas and cakes. Other may want to sell ice creams, burgers, sausages etc.. Local groups and charitable causes will be welcome attend to raise funds should they wish.

By keeping costs down, it makes it an attractive event for families and friends to get together.

We will have a raffle on the day to help cover the costs, with tickets being sold at the entrance and table to table. There will also be a Donations Box at the entrance.

So keep this date clear in your diary and we will be keeping you up to date in the coming months.

**Volunteers are needed and anyone with ideas for fun events, games or other activities is invited to let us know.** If you would like to be involved please contact:-

Jim Enright on 851859 email: [jimenright@newtonstcyres-pc.gov.uk](mailto:jimenright@newtonstcyres-pc.gov.uk) or  
Peter Hawksley on 851269 email: [editor@newtonwonder.net](mailto:editor@newtonwonder.net).

The next Zoom meeting will be on Thursday 10th March AT 6:00PM.  
Please contact Jim for the link to the meeting.



# Newton St Cyres 200 Club

The draw for February took place at the Coffee Morning on the 12 February.  
The winners were:

## February 2022

No. 140	J Salter	£50.00
No. 71	J Rendle	£10.00
No. 43	M Ashdown	£10.00
No. 26	Dr Harding	£10.00
No. 146	M Slade	£10.00

If anyone would like a number just let me know. There are a few spares

The Club is registered through the Mid Devon District Council Licensing Department as a Small Society Lottery under the Gambling Act 2005

Jane

## NEWTON RAMBLERS

### Sunday 13th March

The walk this month starts from Steps Bridge, near Dunsford, and takes us along the River Teign to Clifford Bridge. As it is still not possible to return on the other side of the river we will go up and back along the same side although there are alternative paths for quite a bit of the way. We are hoping to see a good display of daffodils along the pathway.

This is an easy walk of around 4 miles with no hills!

We will meet at the Newton St Cyres Parish Hall Car Park at 9.30 am and take the minimum number of cars.

**All are welcome. For more information please ring Jean or Roger Wilkins on 01392 851337**



# Rebecca de Mendonca

## pastel demonstration

Rebecca de Mendonca is a well-known local artist and demonstrator, specialising in paintings of horses as well as other animals, landscapes and portraits. We were happy to welcome her again for a demonstration - this time, how to place figures realistically, first in a rural then an urban scene.

Rebecca had to work fast to paint and impart knowledge at the same time, and she kept our attention throughout. She worked on mount card, primed to give a gritty surface, providing tooth for the pastel. In her Dartmoor scene, she first painted the tor and rocks quite loosely with acrylic and charcoal or a black Conte crayon, before working with pastel from the sky down to the foreground. She was careful to blend sky colour into distant land colour so the horizon was indistinct.

Careful attention was paid to tone, warm/cool colours, and saturation. A colour swatch down the right side of the painting formed a useful reference. A variety of marks added visual interest, and highlights were added last. The two figures were drawn with pastel pencil, and she stressed the importance of grounding figures so that they don't appear as floating or stuck on.

In the urban scene, she explained the basic rules of perspective, and demonstrated how to establish the eye line and the vanishing point, using a setsquare, then added figures to show that most people's heads tend to be on the eye line while their feet indicate their distance from the viewer. Small details such as the tilt of a head, the angle of an arm or leg, and a highlight on some clothing, carry a lot of information about the way the person is moving and how they are feeling, even if the figure is quite small. She

suggested copying diagrams of skeletons in order to better understand the proportions of the human body.

We learned a lot from this lively, entertaining and informative demonstration.

Jenny Hallam



## F. J. Stevens & Son Memorials

**Crediton & Barnstaple**  
01363 776816      01271 861624



Simon's Mobile: 07850128413

Sam's Mobile: 07969613577

Email: [stevenscrediton@yahoo.co.uk](mailto:stevenscrediton@yahoo.co.uk)  
[www.fjsmemorialsandheadstones.co.uk](http://www.fjsmemorialsandheadstones.co.uk)

Albert Road, Crediton, EX17 2BZ  
Unit 2 Estuary Business Park, West Yelland, Barnstaple, EX31 3EZ



## Elite Blinds

& Tracks Ltd.

Manufacturers and Suppliers of all types of  
Quality Blinds & Window Dressings  
VERTICAL ROLLER VENETIAN WOODEN ROMAN  
CONSERVATORY CURTAINS TRACKS & POLES

**Free Estimates** Competitive prices

**Tel: 01392 860141**

email: [eliteblindsdevon@btconnect.com](mailto:eliteblindsdevon@btconnect.com)

Visit us at: [www.eliteblindsandtracks.co.uk](http://www.eliteblindsandtracks.co.uk)



We are an independent, caring, family run practice  
providing the highest standard of medical  
and surgical care with multiple specialists  
in house. Well equipped branches and  
state of the art hospital.

We provide our own 24hr Emergency service.  
Surgeries available seven days a week.



**[www.cityvets.co.uk](http://www.cityvets.co.uk)**

Four Branches across the City of Exeter  
Heavitree 01392 250066 Alphington 01392 493999  
St Thomas 01392 250000 Whipton 01392 465553



## Adrian Andrews

### home & garden maintenance

- | fencing
- | turfing
- | garden sheds and raised beds
- | grass & hedge cutting/laying
- | paths, patios and walls
- | pressure washing
- | house exterior maintenance

for a **FREE / No Obligation Quote**

t. 01392 860766

m. 07743 969647



## How much would you like to know about the past in Newton St Cyres?

Newton St Cyres History Group has an ever-growing library of publications. What better way to orientate and acquaint yourself with your local surroundings!

### • **Newton St Cyres – A Village Story (£5)**

Compiled by residents of this village in 1999 (the green 'millennium book') containing a wealth of reproduced photographs.

### • **Newton St Cyres Historical Village Walks (£1)**

Four brief walks around the Village, the Western Bluff, West Town and Station Road with maps and an explanation of the road cuttings, levelling and straightening.

### • **Newton St Cyres Mining and Miners (£1)**

Our mining heritage, both manganese, claimed to be "*the first commercially successful manganese mines in the world!*", and lead & silver up on Tin Pit Hill that may go back to Roman times.

### • **Newton St Cyres Church – Statement of Significance (£2)**

Describes the history and most important features of the church, dedicated to St Cyr and St Julitta.

### • **Memories of Boyhood in a Devon Village (£3)**

Written by Alfred Abraham, born in Newton St Cyres in 1893. He shares his memories growing up in the village at the beginning of the 20<sup>th</sup> century.

### • **Newton St Cyres in the 1940s & 1950s (£5)**

Written by Stella Cork, born in Newton St Cyres in 1934 and the daughter of the village postmaster. She gives a remarkable description of families in the village and an insight into village life.

### • **Newton St Cyres and The Civil War 1642-46 (£5)**

The story of grief, hardship and a little excitement for those living in the village almost 400 years ago during the English Civil War supported by coloured photos and maps. Would you have been a Roundhead or a Cavalier?

Also visit [newtonwonder.net](http://newtonwonder.net) where you will find data and analyses on:

- Births, Deaths and Marriages in Newton St Cyres (16<sup>th</sup>–18<sup>th</sup> century)
- UK Censuses on Newton St Cyres (1841-1911)
- Newton St Cyres Tithe Map of 1843

**Copies can be purchased by contacting**

**Jean Wilkins (01392 851337), [jeanwilkins1@btinternet.com](mailto:jeanwilkins1@btinternet.com)**

# Do You Remember... February?

## **FEBRUARY 1972**

### **Exeter City Council**

Concern was expressed about the possibility of Exeter City Council taking over Newton St Cyres and the Parish Council resolved to fight any proposed take-over.

### **The Parish Council**

The lighting of Station Road was due to get underway this month. Horses came in for some comment when two councillors passed on complaints from parishioners about horses being ridden up the footpath on School Hill and across the village green. No action was taken though aware that by-laws forbid the riding of horses on a footpath.

### **Sunday School Presentations**

At the Methodist Church Sunday School party presentations were made to those with good attendance.

### **Deaths**

The deaths were reported of Jeffrey Fletcher (aged 71 years) a former Chief Dental Surgeon to the County, first of Gloucestershire and then of Devon and of Group Captain Peter Walker, who ran the Devon Council of Social Service .

### **Parish Hall**

The Parish Hall had a beautiful new stage, with curtains, wings, flies, switch-board and dressing room. The one thing missing was ... actors! Mr & Mrs Phillput are seeking members for the Drama Group.

The Art group was thriving and holding meetings in the Club Room.

Newton St Cyres AFC held a St. Valentine's dance with The Silvertones Dance Band in the Parish Hall.

Things that go Bump in the Night  
Most people in Newton St Cyres wondered what was happening on January 10<sup>th</sup> when at 9.30pm houses shook and windows rattled. Reports of the bang came from points as far apart as Crediton and Aylesbeare. So far nobody has owned up to it, but the most likely candidate seems to be the U.S. A.A.F. which has been flying F111's over Exeter a good deal lately.

### **Cancer Research Campaign**

Regular Whist Drives are being held for this cause along with a coffee morning at Mrs Wheaton's home, "White Gates", Langford.

### **Playgroup**

It was reported that there was a need for a Playgroup in the Parish.

### **Over 60's Club**

Had been to a pantomime in Torquay, preceded by a meal at Babbacombe.

### **Gardeners Association**

Set subscriptions at 10p and arranged 22<sup>nd</sup> July as the date for their Show.

### **Coffee Club**

Miss Walker was the speaker from the Royal School for the Deaf.

### **Women's Institute (WI)**

Heard a talk on wild flowers from Mrs Poulton and made a presentation of a seat for Court Orchard. Mrs Blatchford presided, Mrs Scott was a new member and the competition was jointly won by Mrs Bornand and Mrs F. Mears.



## **Cowley News**

P.C. David Woods, who resided in Cowley, and fellow P.C. Richard John received commendations from the Chairman of the Magistrates for the way they dealt with a disturbance on a bus in Plymouth as both were barged, kicked and punched.

### **Potatoes for Sale**

Half-cwt (56 lbs) of potatoes could be delivered for 50p.

## **Sport**

The Newton Wonder Sports Page showed the recently calculated averages for the Cricket Club.

R.Cashing topped the batting with an average of 61

J.Quicke lead the bowling figures was an average of 0 runs per wicket.

D. Vallance scored the most runs at 139.

N. Wheeler topped the bowling taking the most wickets with 24.

The Soccer report included winning results for the Senior Team.

Rewe (1) 2 Newton St Cyres (1) 4  
Newton St Cyres 2 Lapford 1

Scorers: Eakers, R.Cashing

Exbourne (0) 0 Newton St Cyres (1) 8  
Scorers R.Cashing 5, W.Holt 1, M. Eakers 2.

## **FEBRUARY 1982**

Newton Wonder cost 75p per annum.

### **Bad weather**

There were reports of events having to be cancelled due to bad weather.

The Newton St Cyres Players had the snow to blame for the postponement then cancellation of their Annual Revue.

## **Village Trees**

It was reported that some trees were under threat – the 70's redwood in the Vicarage Garden had its roots damaged by contractors and the pine trees behind Court Orchard were too close to the vertical bank.

### **Church Tower**

Was floodlit for the Wedding Anniversary of Doug and Sylvia West, the Wedding Anniversary of Prince and Pearl Furneaux (Ruby Wedding), the birthday of Robert Holt and in memory of Alice Hewlett.

### **Wedding**

The wedding took place between Tim Durrant and Chris Olsen.

### **Flooding**

Reported as still causing trouble in the Parish

### **Twinning**

A twinning visit was planned to Rots.

### **Mr TSW Competition**

Christopher Lee reached the semi-finals of the MR TSW competition.

### **Women's Institute (WI)**

Olive Cheriton reported on the WI evening for last month about the slide show from Mr & Mrs Ware, "Birds of the British Isles" accompanied by their songs. Mrs Curtis, the president, proposed the vote of thanks.

Competition winners were Mrs Stevens (bird ornament) and Mrs Halse's sweet smelling flower was the Flower of the Month.

## **FEBRUARY 1992**

### **Parish Council**

Asking for the Parish Appraisal answers to be returned.

There was great concern in the parish about dog fouling on public footpaths.

## **Afternoon Club**

Continuing to meet every fortnight.

## **Scrabble Group**

Were active during the month.

## **Recreation Ground Club**

were planning to hold an "Any Questions" evening with John Durrant as the Question Master. The Panel would consist of: Prue Quicke, Jean Palk, John Marshall, Phil Heal, Rev. Williams and Adrienne Fanning.

## **FEBRUARY 2002**

Newton Wonder Volunteers Wanted  
Mary Wotton and Gail Meldrum were retiring from the Newton Wonder magazine and new volunteers were being sought.

## **Recreation Ground Club**

Held a Quiz night and a Valentine's disco.

## **Parish Council**

Proposing to build a new bus shelter by the Post Office at a cost of £3,000.

## **Jubilee Mugs**

There had been a good response to orders for the Jubilee mugs.

## **Newton St Cyres Post Office**

The monthly article by Sue from the Post Office thanked people for the Christmas cards that had come in for recycling.

## **Young Farmers**

Had been helping at Langford Park with the gardens.

## **History of the Recreation Ground**

John Durrant wrote an interesting article on the history of the Recreation Ground.

## **FEBRUARY 2012**

Newton Wonder cover price was 50p.

## **Police Report**

Calls to the Police in November included one about fireworks going off too close to property, one about horses in the road, one about a tyre in the middle of the road, one concern for the welfare of 2 males walking along the A377 and one domestic related.

## **Village Signage**

The Council reported that the new Village sign had gone up on the green and the West Town Road sign had been amended. A new sign notifying car owners that Court Orchard was for residents parking only would be erected soon.

## **Footpaths**

A meeting is to be held between the Council & Devon County Council concerning a proposed footpath for the allotment fields.

## **Precept**

The Council discussed the setting of the Parish Precept for 2012/2013 and the majority agreed to raise it to £7,500 from £7,000 at present. It was generally felt that a small increase was justified but that the present economic climate should be taken into consideration.

## **Dog Fouling**

Concern was expressed about the problems of dog mess. The Parish Council appealed to all dog owners to pick up after their dogs have fouled on verges and footpaths. Failure to do this (and if they are reported by a member of the public) can result in a fine being imposed.

## Hedges and Drains

There are on-going problems with overgrown hedges alongside the road. The Council will also write to Network Rail and ask them to cut back the hedges on both sides of the road leading to the railway bridge in Station Road.

## Noticeboards and Roadsigns

The Council agreed to repaint all the notice boards in the spring in time for the Best Kept Village judging in the summer.

## Twinning Circle

Held monthly sociable evenings

## NSC Youth Club

Meetings for 10- to 15-year-olds were taking place fortnightly from 7pm to 9pm in the Village Hall where activities, talks, new skills and fun were on the agenda.

## NSC Gardening Club

General principles of winter Pruning was covered by Alan Leaman.

## NSC Christmas Cards

It was recorded that Wendy Scott produced two "snow" photograph scenes and organised the printing. The Post Office agreed to sell them and Wendy donated the profits to the village community

## NSC Primary School

To become part of the Exe Valley Federation, a partnership of three Primary Schools that include Cheriton Fitzpaine Pre-School and Primary School and Thorverton C-of-E Primary School.

## NSC Tennis Club

This year's recipient of the Dudley Errington Memorial Trophy for Player of the Year went to Gerry Bowden-Thompson who was presented with the trophy by Dawn Errington.

## History Group

Alan Rosevear who has researched and written extensively about the growth of the transport system in Devon and through the village spoke specifically on Turnpike Roads. A further talk on metal detection was given by Alan Hancock with a follow up talk from Colin Hart scheduled for April when he will speak about his 25 years' experience of using a metal detector.

## Best Kept Village

Newton St Cyres scored an excellent 91 points last year improving on the previous year score of 85.

## Devon County Show

Mary Quicke was elected as President of the Devon County Show.



**Sustainable  
Crediton**

**Fruit Salad with  
Fragrant Pomegranate  
Seeds**

Enjoy a little winter luxury. Take the seeds from one or two pomegranates and remove any pieces of the yellow membrane. Sprinkle the seeds with a little rose water and caster sugar. Stir well and leave for an hour or so before adding to fresh fruit salad or yogurt.

Paul Cleave

# **Bert Jewell writes Rhymes and Ways about Gardens and Gardening**

## **March**

Looking through the window at the world outside,  
The beams across the sky, so colourful, so wide  
as the sun slowly rises, turning night into day,  
the creatures of the dark begin making their way.

To a gap in the stones or an old rustic barn  
where the folk of the land would tell a good yarn,  
to a place they can rest away from the crowd,  
the traffic, the people, it all sounds so loud.

But the flowers in the garden spring open with glee,  
Displaying all their colours for the insects to see,  
Like the yellows, the reds, some blue and some white,  
to the eye of an insect, it's a magical sight.

As they flit to and fro, going this way and that,  
The low-growing crocus makes a colourful mat  
where they rest for a while, just hidden from view  
till the danger is past, then start out anew.

To visit more flowers till the sun starts to fade,  
Casting long shadows, creating more shade  
where the creatures of the dark begin making their way,  
Till the sun once again turns night into day.

### **Things to do in the March garden**

Firstly, our paths. Sadly these have not yet got under way, at least not as I write these notes. Fingers crossed they will be started soon.

Now, if ever there was a month in the gardening calendar that you could get bogged down in, it is March, not because the ground is waterlogged, but because of the number of things you have to do.

Let's start with the lawn. To me, a good lawn sets off the rest of the garden. I know that the emphasis these days is on rewilding, and yes I'm all in favour of encouraging wildlife back into our gardens, but there has to be a balance. So, firstly, check for wormcasts.

These are like miniature mole hills. Scatter them with a stiff broom or lawn rake before you make the first cut (with the deck raised). Not too short just yet, leave any feeding till next month or even early May, as late frost could damage soft growth.

It's time for the secateurs to have a workout. There's pruning to be done. Both buddleia and ornamental elders can be pruned, by cutting last year's growth back to about 6" from the main framework or old branch. Hardy fuchsias can be cut down fairly hard to encourage new growth from the base.

Cornus Alba cultivars (dogwood) grown for their coloured stems can be pruned by cutting the oldest stems off at about 6" from the ground.

I may be old fashioned as I still think of roses as hybrid teas or Floribundas, now known as modern bush roses. These are the ones that really do need pruning this month, or early next, unless you are happy to admire them from an upstairs window. Start by cutting out any shoots that are dead, any that are weak and any that are crossing the centre of the bush, rubbing against other stems. All the remaining stems can be cut down just above an outward facing bud, usually around knee height .

Now is a good time to apply a mulch around fruit bushes and along rows of summer fruiting raspberries. Tidy up the strawberry bed but leave feeding until next month.

In the veg patch, you can sow lettuce, rocket, radish, broad beans, early carrots and peas. Talking of peas, last year I planted the seeds in cells, five seeds to a cell, then when large enough, planted them out in rows in our allotment. It seemed to work quite well.

### **Plant of the month**

The daffodil has to be my plant of the month. All daffodils come under the heading of Narcissi, whether they are tiny Bulbocodiums or large trumpets.

My favourite variety is the Cyclaminus type. These have swept back perianth (petals) showing off the slender trumpet. Usually one flower to a stem, short enough not to suffer too much in strong winds.

Enjoy your gardening.





# Newton St Cyres Parish Hall

*Tues 09.00 a.m. to 11.00 a.m. & Thursdays 12.00 noon to 1.30 p.m.*

with full



Service

*now selling some household requisites, confectionery and magazines*

**Access by gate at far end of the Hall (coming from A377)**

## JOSH KENSHOLE



**OFFERING ALL ASPECTS OF GARDEN  
MAINTENANCE AND TREE SURGERY**

**GET IN TOUCH NOW FOR A FREE  
QUOTE...**

**mobile - 07925429324**

**email -**

**jkensholegardenmaintenance@gmail.com  
facebook-jkensholegardenmaintenance  
instagram-jkensholegardenmaintenance**

Covered by all  
major insurers



Established  
over 25 years

## CREDITON & EXETER OSTEOPATHS

**Back & Neck pain  
Joint problems & Sports Injuries**

**100 High Street, Crediton, EX17 3LF  
01363 774175**

**Notaries House, Chapel St., Exeter EX1 1AJ  
01392 213899**

## CREDITON COMPLEMENTARY HEALTH CENTRE

**Qualified practitioners in:**

Acupuncture & Chinese Herbal Medicine,  
Alexander Technique, Aromatherapy,  
Counselling, Cranial Osteopathy, Healing,  
Homeopathy, Manual Lymphatic Drainage,  
Nutritional Therapy, Osteopathy, Physiotherapy  
(bodywork), Reflexology

**100 High Street, Crediton, EX17 3LF  
01363 774175**

*Every Child  
Every Chance  
Every Day*

# Newton Nippers

## Preschool

**Ages 2 – 5 years**

We provide high quality Care and Education in a safe and stimulating environment for all 2-5 year olds.



Sessions available Monday to Friday 9.00am to 3.15pm  
30 hour entitlement and Childcare Vouchers accepted.

Contact: Newton St Cyres Primary School

Tel: 01392 851267

Email:

[newtonadmin@exevalleyfederation.org.uk](mailto:newtonadmin@exevalleyfederation.org.uk)

After School  
Club!  
Available  
until 5pm

# NEWTON ST CYRES HISTORY GROUP

## Christmas Traditions



By the time you read this report, Christmas 2021 will be truly packed away, but our CAHZoom meeting in December was suitably seasonal. On Friday 10<sup>th</sup> December, Dr Paul Cleave talked about Christmas Traditions. Dr Cleave is an Honorary Research Fellow at the University of Exeter, and a food historian with a particular interest in Devon. He has addressed the History Group before, on Wartime Recipes and on Christmas Recipes in Devon. If you were there you will remember that he brought samples of the recipes for us to try, but sadly this is not possible in the virtual world.

Dr Cleave started by reminding us that in early December, as he was speaking, the build-up to Christmas and food preparation was going on as it has done for generations – making a cake, puddings, mincemeat and maybe a chocolate log. A main theme of his presentation was to explain how many of these customs are still observed today, although in a different form. Many of the traditions are Victorian in origin, and re-reading ‘A Christmas Carol’ by Dickens, was recommended for its descriptions of Christmas food.

Using as his some of his sources menus and cookery books from the 20<sup>th</sup> century, Dr Cleave mentioned the local connections of a recipe book belonging to Lady Walker, who had lived at The Beehive, and also a book on ‘Coping with Christmas’ by Fanny and Johnnie Cradock, whose editor, Alison Leach, lived locally for some years. A photo of a typical Devonshire farm kitchen of the 1920s was shown, where food would have been prepared on an open hearth with trivets and a cauldron, although in living memory a Christmas dinner could be taken to the local baker for roasting in his oven.

Another tradition was a ‘gooding’. The Western Times reported in 1875 that at Newcombes House in Crediton, on Christmas Eve, the squire would hand out 2/6d or more to anyone who called who was in need, and that many others would do the same. These days the same impulse to help translates into charity giving at Christmas.

Another aspect that links the present with the past is a vegetarian Christmas. It was fascinating to see a 1908 menu featuring lentils, macaroni cheese, stuffed tomatoes, a savoury pie and mock goose for Christmas lunch. This was from ‘A Manual of Vegetarian Cookery’ by Dr Black, who had moved to Torquay for his health and established the Dartmoor Hotel at Belstone with a vegetarian regime. He acknowledged that the recipes were from his cook.

During the 1920s, changes in society started to mean that people were having to manage their homes with fewer servants, and this resulted in books on advice, with recipes, being written and published by society ladies. Dr Cleave referred to some of these. Lady Jekyll recommended serving a Lemon Syllabub with Christmas Pudding. On trying out this idea, he found that it worked very well, as the lemon cream cut through the richness of the pudding, and yet still used traditional ingredients. He commented that although the books are nearly a century old, you can get ideas from them.

Lady Jekyll was sister-in-law to Gertrude Jekyll, the famous garden designer, and wrote for *The Times* on matters such as managing weekend parties and picnics. Mrs Martineau, also a talented gardener and cookery writer, suggested that when children have left home for ‘a winter sports holiday’, it is good to invite friends and neighbours who are ‘waifs and strays’ to come to share a Christmas meal.



*A Victorian game of Snapdragon*

She describes in detail how to decorate the table and what to serve: chilled grapefruit, a soup, sole with fried banana, turkey with whole chestnuts braised in stock and vegetables, and a Christmas pudding, but also mince pies without a lid and with vanilla ice cream and poached pears as a refreshing combination, cheese straws and then a desert of exotic fruit. ‘Snapdragons’ was a popular seasonal game at the time, when large muscatel raisins in a dish

were heated and flamed in brandy and you had to pick one out of the flames. I have never tried this but it must have used a lot of brandy, I imagine!

These days there are quite a few cookery schools in the south-west, but 1920s Devon had an expensive cookery school, Harcombe House at Uplyme, run by Mrs Winifred Francillon, who wrote ‘Good Cookery’ as a training manual. The Christmas dinner was a very traditional meal of roast turkey and sausages or goose, sage and onion stuffing, apple sauce, and a rich gravy with bread sauce, all accompanied by an array of the usual vegetables. Dr Cleave observed that glossy supermarket magazines today still use these traditional recipes, which hark back to Mrs Beeton.

Another parallel with the present was the option of buying and having delivered a complete Christmas dinner, at least in Exeter. Deller’s Restaurant and Café of Bedford

Street offered Christmas and New Year celebrations, and they specialised in Christmas Puddings, making hundreds, all carefully costed, including the cloth and wrappings. Promotion of British produce and supporting farmers is also nothing new. A Fortnum and Mason catalogue of 1927 features Devonshire Cream and Butter, and they also sold Christmas Hampers, costing from one to five guineas. Buying produce from the British Empire was encouraged. The chef to King George V offering a recipe full of spices, rum and fruit from countries within the empire.

During the Second World War, these rich and lavish recipes were no longer possible, but the government considered that Christmas was very good for morale and rationing was varied accordingly. Suitable recipes were distributed and a 1944 leaflet entitled 'Festive Food' was purposely made bright and cheerful, and even though there was not a great deal of food in the shops. Dr Cleave had been shown, by Bill Mitchell of Mitchell's Bakery, Crediton, papers owned by Bill's father and grandfather, in which were recipes given out to professional bakers from a wartime research bakery.

They recommended ways of making the best use of the ingredients available and adhering to government regulations; for instance, icing on a cake was not allowed. Also from this period were a series of letters, which included Christmas greetings to a young airman from Enterlake Farm, Yeoford, who had been posted to India in autumn 1944, just after his marriage. Together they build up a picture of the preparations for a wartime Christmas, and the detail sheds light on the constraints of the time. The Christmas cake was made late because there were not the ingredients to make it rich enough to keep. There was carol singing to raise money for the Red Cross to buy presents for soldiers, but the children were warned that Santa would not be able to make his usual journey and there would be fewer presents for them.

Dr Cleave ended by comparing present-day advice and recipes with those of earlier years. He quoted an amusing extract from Fanny Cradock's book 'Christmas Countdown' from January throughout the year, and saying that without preparations, Christmas can be 'sheer hell for the average wife and mum'! Nevertheless, the planning and looking forward to Christmas, with food being central, is handed on from generation to generation. Although things evolve, many are elements endure.

There were interested questions after the talk ended, and it was a most fascinating and also comforting talk on the way that Christmas food has been enjoyed and celebrated over the years.

Jean Wilkins



## **HISTORY GROUP EVENTS FOR SPRING AND EARLY SUMMER**

### **Sunday 3<sup>rd</sup> April    Exhibition in the village hall, 2pm to 6pm to include:**

Material from Reg Mear's Attic. Reg was a much-loved headmaster of the school here from 1957 until 1979. He kept many school photos and examples of pupils' work as well as teaching schedules and teaching aids about the history of the village.

Lynda Pearce's collection of old postcards. Lynda has many old postcards of Newton St Cyres which will be available to browse in her album.

Lynda's collection of enlarged (A4) pictures of Exeter from before WW2. Lynda will be available to describe the pictures and relate their location to modern Exeter

Reg Bray remembers. Chris Lee taped Reg remembering the village of his childhood when Reg was nearly 100 years old back in the 1990s. Isobel has now digitised these tapes and we are hoping to play them during the exhibition

Collection of old maps. These will be available for you to follow your house or land through time

Entrance fee £2, to include tea and biscuits

**Wednesday May 11<sup>th</sup> 7.30pm in the village hall** Ed Williams Hawkes will speak on 'Dellers of Bedford Street'. Dellers was a famous tea shop that operated in Exeter from 1914 until WW2

**Wednesday 8<sup>th</sup> June, 7.30pm in the village hall.** Adam Falconer, who is helping conduct a survey of ancient woodland in Devon, will speak on 'The Devon Ancient Woodland Inventory review'

## Professionally Qualified Tree Surgeons

With relevant qualifications  
& insurance to complete a wide  
range of services, including:

- ◆ Dismantling, felling & removal
- ◆ Crown reductions
- ◆ Crown lifts & pruning
- ◆ Ongoing tree maintenance
- ◆ Veteran tree care
- ◆ Hedge cutting
- ◆ Woodland management
- ◆ Tree surveys arranged
- ◆ Working locally  
in the Crediton area



WE ALSO  
SUPPLY  
WOODCHIP  
& LOGS

Bruce Kerry

Mobile: 07779 995720

[brucewtw@gmail.com](mailto:brucewtw@gmail.com)

All work completed to British Standards BS3998.

[www.westerntreeworks.co.uk](http://www.westerntreeworks.co.uk)

### CREDITON HISTORY GROUP'S BIG PROJECT

The Crediton group are just about to start on a very big project concerning the properties in the High Street and a very excellent map done of them in 1745, a short time before the fire of Crediton. If you or your family have lived in any of these properties you may be able to help. If you are interested please let me know ([jeanwilkins1@btinternet.com](mailto:jeanwilkins1@btinternet.com) or 851337)

The 1745 map was constructed to show the frontages of each property, as at the time, various additions were being made which were narrowing the High Street. This was affecting the market traders who had their stalls down the centre of the street and had to pay for them. Crediton have very good records of their population through the years to back up this research.

At the moment they are applying for grants as they intend to stage an exhibition in the Museum and to produce a book. They would welcome expressions of interest.

*After the 1960's photo of Coldharbour was published in last month's Newton Wonder, Jenny Tucker wrote to say what wonderful memories that brought for her sister and herself.*

*She writes " We were living in one of the cottages then with my father - Jack Tucker, mother Maudie, my older sister Alison and me Jenny. I was at the Primary School here then. We moved there in April 1963, til October 1969. Our friends and neighbours - Donald, Christine, Andrew and Wendy Baker were in the next door slightly bigger cottage for a similar amount of time also in the 1960's.*

*My Dad and Donald Baker worked for John Quicke, the cottages then being tied. We were the last two families to live in the thatched cottages before they were sold to a family called Tahta who removed the thatched roof and converted the cottages back into one abode."*

# VILLAGE LUNCH

for March 2022, will be held at...

## CREDITON GOLF CLUB

Thursday 17<sup>th</sup> March at 12 noon

2 courses + Tea/Coffee . . . . £12

**MAINS:** Fish & Chips; Sausage & Mash; Curry  
Ham, Egg & Chips; Vegetarian (tba)

**DESSERTS:** Choice from the menu on the day

To book, ring John or Chris Salter 01392 851346  
(by Sunday 13<sup>th</sup> please)

# From farmhouse to council chamber

*Margaret Squires has been in local politics since the year Prince Charles married Lady Di. So it's no surprise that she knows a thing or two about what pleases and irritates the people of Mid Devon. She spoke to Ann Quon Cordingley about the joys and challenges of her decades of council work.*

## **Margaret Squires, Devon County Councillor for Creedy, Taw and Mid-Exe**

As a young girl raised on a farm in Tiverton, Margaret Squires would watch her five older brothers and think that whatever they did, she could do too. No matter that they were bigger and stronger than her. She knew that she could hold her own against them.



Today, the 72-year-old is more than holding her own – not down on the farm these days, but in the realm of local politics. A seasoned councillor with over 40 years' experience at the parish, district and county council levels, Margaret credits her staying power to growing up with those boys. "Cause politics have always been male-oriented," she says.

These days she holds seats on both the district and county councils, representing Sandford and Creedy on the Mid Devon District Council and Creedy, Taw and Mid Exe on the Devon County Council. Because Mid Devon covers such a large sprawling area, you are likely to find her out and about, driving around the county, checking out the state of this or that.

Whatever you may think of her and her politics (she is a Tory party member) she makes it clear that she represents everyone in her constituency. "I'm passionate about the people I am representing. I want to get the best for them all," she says. "It means listening, trying to sort out their needs, pointing them in the right direction and trying to make things work."

Although her grandfather was a parish and district councillor, it was never a given that she would follow in his path. Her father was a farmer and, with her brothers working the farm, she was free to train as a nurse in orthopaedics and special educational needs and

disabilities. However, she gave up nursing at the age of 20 to marry David Squires, whom she met through a cousin.

Together, they ran their own farm, raising mostly dairy cattle. At one stage they had over 100 head of cattle on 100 acres of rented land. However, when the landowners of their farm wanted to join two farms together in 2003, they decided return the land to the owners, buy their beloved farmhouse and retire from farming.

In the kitchen of their Copplestone farmhouse, with its stunning view across the countryside, David, now 80, is sitting quietly in the corner listening to Margaret and me talking. Warm, unassuming and plain spoken, with that down-to-earth hominess of a farmer's wife, she offers tea and gluten-free lemon drizzle cake that she has baked. She talks proudly of her three grown-up children and 11 grandchildren. "When the family all gets together, it's quite a gathering," she laughs. "There were 20 of us on Boxing Day."

It was over tea in another farm kitchen over 40 years ago that she was first drawn into politics. A local farmer who supplied straw for the couple's farm suffered a stroke and was hospitalised in Exeter. Margaret would drive his wife and sister back and forth for visits and was invited back for tea and a chat. The stroke victim, Fred Folland, was a parish councillor, and it was over those chats that Fred's sister, also a parish councillor, would talk to Margaret about parish council work.

"I thought that sounds interesting, but didn't think any more about it until Fred didn't fully recover and resigned from the council. I was in the village one day and saw a notice that they were looking to co-opt a parish councillor, and thought 'Hm, I'd like to do that,' " says Margaret.

It was 1981, and pregnant with her third child at the age of 32, she decided to enter parish politics. "We'd already got two sons and weren't intending to have any more when I got pregnant," she says laughing.

With her farming background, she wanted to make a difference representing the interests of farming and rural communities, which she felt needed a fairer hearing in local government. She successfully served out Fred Folland's term on the Sandford Parish Council and when time came for re-election, Margaret stood and won a full four-year term. She would serve on the parish council from 1981 to 2013, before getting into the district and county councils.

Her seat of Creedy, Taw and Mid Exe is mostly rural and covers 29 parishes – that's almost half the 62 parishes in Mid Devon – and covers a wide swathe from Wembworthy across to Bickleigh and from Thelbridge down to Newton St Cyres.

Once a month she goes out with the neighbourhood highways officer, Steve Tucker, to check out the state of the roads. “Usually it’s issues I have picked up from the parish councils, and say to Steve: ‘Look, such and such parish council is concerned about the road here, so can we go and have a look.’ It can be anything from potholes and flooding to violations of planning and highways regulations, and more.

She recently had a complaint from residents about trucks from a logging company making a mess of their road. “The road was in an awful state. Big trucks going onto the verges on either side of the road, the mud was unbelievable,” she says. As a result of her visit, the company was ordered to clean up the road or their operation would be stopped.

If you ask her what her biggest achievement has been, she hesitates. “It’s difficult to say. I mean, I got elected again, so I must be doing something right,” she says referring to last year’s county council election, where she beat four other candidates with a 54% share of the vote.

She acknowledges that it isn’t easy managing expectations and trying to please all parties without upsetting some people. “The person on the street doesn’t always know what the planning regulations are, so when you’ve got something that shouldn’t be happening, it’s got to be matched to the policies, and that’s not always easy because you know that if you are pleasing the applicant, very often you’re upsetting the objector. So you can never win,” she sighs.

Since Covid, she works mostly from home on her laptop. While most might relish working at home, she says it has disadvantages. “Previously, I could go into the office and pop along the corridor and see planning people or environmental health or whatever, and talk to the officer concerned,” she says. “With working from home, you can’t do that. I would rather do things talking to somebody than writing long emails. Writing long letters and emails is not my forte.”

It’s 7pm on a Thursday and Margaret has just arrived at the Newton St Cyres Parish Council’s monthly meeting. Chairman Jim Enright invites her to speak early as she has another meeting to go to. As county councillor, she briefs the councillors on a number of issues, including their recent request to visit Station Road with highways officer Tucker to look into overgrown bramble bushes and unauthorised parking. When she finishes, she heads off to a parish council meeting in Sandford. With 29 parishes to cover, she has to be selective about which meetings to attend as some evenings she can be asked to up to five meetings.

Chris Southcott, the Newton St Cyres parish councillor responsible for highways, expresses sympathy for the challenges Margaret faces. “Margaret does a good job but she is up against financial restraints. Paperwork, bureaucracy. It’s an uphill battle.”

That is evident in the areas that Margaret cares deeply about – children’s services,

education, cutbacks in council funding and levelling up. “If you look at Devon schools, the money children in Devon get is £250 less per child than the average across the country. If you’ve got 100 children in a school, that works out to a lot of money,” she says. “Why should our children be worth less than children in the city areas?”

When Margaret started out as a parish councillor, she made it a point to stay independent and steer clear of party politics. However, that changed in May 1997 when Labour came to power under Tony Blair. “I joined the Tory party because I didn’t think Labour were doing anything for us in the rural communities,” she says. “We saw the cuts they were making. I have always been interested in rural areas and the communities there – farming and that sort of thing.”

It was also harder to run as an independent without the backing of a party structure. “You can’t get anywhere in county or district council unless you are in a party. Because you tend to vote together with the party, that’s the only way you can get anywhere,” she says.

Despite her Tory allegiance, she doesn’t feel she is political. “I go with my conscience. There are some issues such as the budget where I will always vote with the group. But on most other things, we have got leeway. I’m as independent as I can be. I am a Tory because I go with Tory principles, but as far as serving as a councillor, I look after everybody that’s there.”

What does she think of what is happening in Westminster with the partygate probe? “I don’t know what to think about Boris,” she says. “What I am hearing now doesn’t give me much confidence.”

While the job of a councillor may be an uphill battle, it does have its moments. Recently, a resident contacted Margaret about a company proposing to divert vehicles along roads that were not suitable to take large volumes of traffic. Margaret got in touch with the neighbourhood highways officer, who confirmed that the company was in the wrong and should change its route away from the resident’s road.

“This was a resident who lived in the area a long time and always contacts me when she has a problem. And she came back to say thank you because it was sorted within 24 hours. It makes such a difference,” she says with a smile. “It happens sometimes.”



## RING A BELL?

Is this ring yours? It was found in the public phone box/library near the Beer Engine. If you think it might be yours, please contact Peter Cordingley at [cogscord@outlook.com](mailto:cogscord@outlook.com).

Newton St Cyres Parish Hall are pleased to present

# WINTER WILSON

Saturday 9<sup>TH</sup> April 2022

Doors 7pm Performance 7.30pm



Pre-Covid, Winter Wilson had completed tours of Australia, New Zealand, Canada and most of Western Europe, in addition to the UK. Throughout the pandemic they streamed 'Live from the Lounge' for 60 consecutive weeks and also wrote and recorded their new album *The Passing of the Storm*.

Superb writers, singers and musicians, Kip Winter and Dave Wilson bring a sense of intimacy to every venue, blending superb, often hard-hitting original songs, stunning harmonies and musicianship with sometimes hilarious humour and tales of life on the road. Kip (vocals, accordion, guitar, flute) "simply has a voice to die for" ( John Roffey, Maverick Magazine), whilst Dave (vocals, guitar and banjo) is now rightly recognised as being amongst the top tier of British songwriters, with his songs sung in folk clubs across the UK and beyond.

**This will be an enjoyable evening with a talented duo you do not want to miss!**

Tickets £12 available via their website <https://www.winterwilson.com/dates>

or from Nicola 01392 851985



# March at Crediton Arts Centre

March sees another of our lovely Live Lounge evenings on Friday 11<sup>th</sup> at 7.30pm, with live music from Stuart Toms and our friendly and enthusiastic bar staff ready to serve you the finest Hanlon's ales and Sandford Orchard ciders.

On Saturday 26<sup>th</sup> we will be lucky enough to host a visit from the wonderful

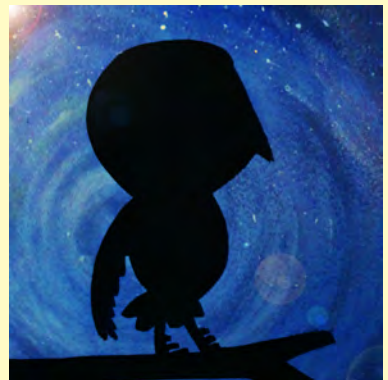


Suthering duo, who have taken the folk scene by storm with their unusual and fresh approach, championing female characters, creating new narratives for women and unearthing female heroines of folk. Julu and Heg will also run a singing workshop in the afternoon (2pm) before the performance at 7.30pm.

On Saturday April 2<sup>nd</sup> at 2pm we have Clockworth Moth Theatre with their magical puppet show *The Owl Who was Afraid of the Dark*, based on the popular children's book by Jill Tomlinson. Family shows are always popular, so book early.

Tickets for all shows are available from [www.ticketsource.co.uk/creditonartscentre](http://www.ticketsource.co.uk/creditonartscentre)

Jack Robson





# ISCA VOICES

## Choral Music from Sacred to Jazz



Former Girl Choristers of Exeter Cathedral Choir  
MUSICAL DIRECTOR ~ STEPHEN TANNER

**HOLY CROSS, CREDITON PARISH CHURCH**  
**SATURDAY 2nd APRIL 2022 @ 3.00PM**

Tickets £8 to include tea and cake afterwards in the Boniface Centre  
Available from A E Lee Outfitters, High St Crediton (cash only)

Reservations - Text 07850 441 920

or

On the door - cash or card

Children Under 12 yrs free

**In aid of Crediton Parish Church Music Endowment Fund**

*UK Registered Charity Number: 1136033*

*Isca Voices UK Registered Charity Number: 1182942*

## How well do you know your village?

Can you answer the following questions:-

1. WHEN was the picture taken?
2. WHERE was it taken?
3. WHO is in the Picture?

No 64



For a closer look see our website:-[www.newtonwonder.net](http://www.newtonwonder.net)

On the Home Page you will find this picture and a link to all the quiz photos so far and an easy form to submit your answers.

## Sherwood House,

Newton St Cyres EX5 5BT 01392 851622

In these difficult times when we all need some space and calm, Nikki and Mark Chambers would like to invite you to come and walk around our beautiful garden of 25 acres.

**EVERY WEDNESDAY ONLY - OPEN 10am to 1pm -**



Sturdy footwear required.

We can only accommodate 20 cars, so first come first served!

Please observe social distancing rules. At own risk

No charge.

No dogs.



# Credition Independent Bed Company

27 High Street Credition EX17 3AH (Next to Costa) Email: [enquiries@creditionbeds.co.uk](mailto:enquiries@creditionbeds.co.uk)

Website: [creditionbeds.co.uk](http://creditionbeds.co.uk) Tel: 01363 774156

## Special Offers

**Clearance Mattresses** starting from **Single £100 Double £140 Kingsize £180**

**EXTRA 20% DISCOUNT** when bought in quantities of 6 or more - Limited Offer

4'6 Pocket Master 1000 Divan Set

**£399**

4'6 Double Amber Package Deal

2 drawer divan set with matching headboard

**£429**

4'6 Double Coral Package Deal

2 drawer divan set with matching headboard

**£549**

3' Single Stress-Free Max Cool

5 Point Adjustable Bed

**£949**

4'6 Natural 1500  
Mattress with  
Merino Wool  
**£479**

5' King Size Ice Cool 1000  
Mattress - Covered in a  
Luxurious Cooling Yarn Fabric  
**£439**

4'6 Calypso+ 4000 Pocket Sprung  
Mattress with Silver Ice Memory  
Foam for Comfort and Support  
**£699**

4'6 Dartmoor Beds Handmade Kirtonian  
Firm Mattress with luxury layers of  
Dartmoor Wool  
**£799**

- Fast Delivery - Expert Advice - Best Prices

## AIR ROOFING SOLUTIONS

## RESIDENTIAL AND COMMERCIAL SPECIALIST ROOFING SERVICES THROUGHOUT THE SOUTH WEST

SPECIALISING IN

SLATING AND TILING

FLAT ROOFING SYSTEMS

LEAD WORK AND OTHER HARD METAL SYSTEMS

All roofing works completed - no job too big or too small

All of our work is fully guaranteed. Deposit protection insurance and insurance backed guarantees are available on all new and replacement roofs.

**Request a quote 01884 821514**

M: 07737 433869 E: [aiirroofing@gmail.com](mailto:aiirroofing@gmail.com)

AIIR ROOFING SOLUTIONS - DEVON

**[www.aiirroofing.co.uk](http://www.aiirroofing.co.uk)**





Flexible - Personal - Exclusive  
We provide the space - you provide the magic!



[www.harefieldbarn.co.uk](http://www.harefieldbarn.co.uk)





# NEWTON ST CYRES GARDENING CLUB

Each year, January and February seem to pass by more quickly than ever, and we are looking at March when the gardens really start to come into their own once again. From the early primroses, the beautiful snowdrops and hellebores, the daffodils are taking the stage in all of their different forms.

Indoor bulbs are adding colour and scent and **Hyacinthus orientalis** 'Delft Blue' is always a winner. There are so many varieties and colours of hyacinths from whites, pinks, salmons, yellows and purples, that there is always one to include in any container outdoors or indoors. Indoor bulbs can be replanted outside, after flowering, where they will flower again the following spring, although not to the same quality as the flower heads are likely to be much smaller. The bulbs can cause skin irritation when being handled, so it may be good to wear gloves.



*Hyacinth Delf Blue*

Outdoor-grown hyacinths can be left to flower each year in their existing location. After flowering, the flowering stem should be cut off to stop the plant from wasting energy on seed production. The foliage should be left to die down completely and tomato feed can then be used for the bulb to produce the next year's flowers.

**Anemone** corms can be planted now for flowering in early summer. They should be soaked in warm water overnight to allow them to swell. When potting them, fill the pot with compost and firm to around 5cm below the rim. Plant the corms 5cm apart on their longest side. They find their own way for their roots and shoots to develop. Then cover with compost to the top of the pot. Water and then place in the light for the corms to shoot. When the weather is warmer, the pot can be placed outside.



*Anemones*

**Onion and shallot sets** (small dormant immature bulbs) can be planted into prepared ground ready to root and grow. This is quicker than growing from seed and low maintenance. Onion sets are best grown about 10cm apart, in rows that are 30cm apart, as this will help to maximise root growth. They should be planted with just the pointed tip showing above the soil. Once planted, check that they are not disturbed by birds. If they are, replant.

### **RHS job list for March includes**

1. Prune bush & climbing roses
2. Plant shallots, onion sets and early potatoes
3. Plant summer flowering bulbs
4. Lift and divide overgrown clumps of perennials
5. Top dress containers with fresh compost
6. Mow the lawn on dry days (if needed)
7. Cut back Cornus (dogwood) and Salix (willow) grown for colourful winter stems
8. Hoe and mulch weeds to keep them under control early
9. Start feeding fish and using the pond fountain; remove pond heaters
10. Protect new spring shoots from slugs

### **What's on in March?**

The Garden Club will be visiting **Sherwood on Wednesday 23<sup>rd</sup> March** to see the amazing displays. The gardens are open from 10am to 1pm, and we will aim to arrive around 10am. There is limited parking, and sturdy footwear is advised.

We are also pleased to announce our first indoor Club meeting since the start of the pandemic. On **Wednesday 30<sup>th</sup> March** we will be welcoming **Rob Vincent of Hutch Houseplants in Exeter**. The evening will start at 7.30pm and be held in the Parish Hall. We hope that many of you will be able to join us.

### **RHS Rosemoor**

**Spring Flower Festival Saturday 12 March: 11.30am (after judging)-4pm.**  
**Sunday 13 March: 10am-3pm.**

The Festival focuses on daffodils, camellias, early magnolias and rhododendrons. In addition to the RHS Early Camellia competition, the show



*Spring flowers*

will also include classes for ornamental shrubs, together with RHS Daffodil and Hyacinth competitions. The RHS Hyacinth competition is in its seventh year at the Rosemoor Show. There will be trade and advice stands, plus a superb range of early spring shrubs, bulbs and flowering plants available to buy in the Plant Centre.

**Japanese Discovery Weekend 19-20 March.** Celebrate Japanese culture at RHS Garden Rosemoor. From the intricate art of Bonsai and Ikebana to martial arts, including iaido and karate, with a chance to learn more about Japanese mindfulness techniques.

**Apine Garden Society Show 26 March 10am-4pm.** A fantastic opportunity to see some of the best-grown alpiners in the country.

Advance Notice for Early April. **Saturday 2<sup>nd</sup> and Sunday 3<sup>rd</sup> April 2022.** **Cornwall Garden Society's 2022 Spring Flower Show at The Royal Cornwall Showground near Wadebridge.** Dramatic displays of spring flowers and shrubs; exquisite exhibits by leading nurseries and landscape artists; a spectacular spread of horticultural traders; a Floral Art marquee and botanical illustrations from the Eden Project's Florilegium Society are just some of the features. Says Show Director, Dickie Trant: "Dazzling daffodils, magnificent magnolias, captivating camellias and resplendent rhododendrons in the Competitive Classes, and 80+ specialist nurseries and garden traders are just the thing to banish Covid-19 into the shadows and give us all a much-needed boost after the challenges, restrictions and cancellations of the past two years."

Full details at <http://cornwallgardensociety.org.uk/spring-flower-show>

Happy Gardening!

Nicola Baker



# NEWTON ST CYRES GARDENING CLUB

are thrilled to welcome Rob Vincent,  
from Hutch Houseplants in Exeter,  
to speak at our meeting on  
**WEDNESDAY 30<sup>TH</sup> MARCH AT 7.30PM**  
**In the Parish Hall EX5 5BW**



**ADMISSION ONLY £2.00 - ALL WELCOME**  
**TEA, COFFEE AND BISCUITS**  
**PLUS A RAFFLE & PLANT SALES**

# Barton Place Farm Shop

Wrefords Lane, Exeter, Devon. EX4 5BS

A family-run farm shop, we support many local producers & suppliers, as well as selling our own beef, lamb and eggs.

We offer fresh vegetables, chilled and frozen goods, cupboard essentials, snacks, cakes, treats, Leafstreet gifts and takeaway options of hot food & coffee.

In 2020 we will start a joint venture to offer milk via a vending machine (available 24/7), with milk supplied by our neighbours.



Open 7 days a week  
9.00am to 6.00pm Monday - Saturday  
10.00am to 4.00pm Sunday

Tel: 01392 422720



# Ed Rogers

Landscape Construction  
and Ground Works

## Services include:

All types of Landscaping,  
Ground Works, Driveways,  
Plant Hire, Paving,  
Fencing & Decking

Experienced professional landscaping  
and ground work services for  
residential and commercial properties  
across Exeter, Mid and East Devon.

[ed-rogers.co.uk](http://ed-rogers.co.uk) | 07717 845 184



## Little Explorers Day Nursery

We are based at

Bernaville Nurseries, Cowley EX5 5EU.

Monday to Friday 7:45am-6.00pm,  
Age range from Birth to pre-school.

please contact us on 07598527713  
or Email [Littleexplorers16@mail.com](mailto:Littleexplorers16@mail.com)

# GREEN SWEEP



Your local chimney sweep. Qualified,  
professional, insured. For the very best job at  
competitive prices contact us today.

**NOW UNDER NEW MANAGEMENT!**

Make sure your chimneys are swept annually!

The Green Sweep, 12 Hawthorn Road, Crediton EX17 2DF

Tel, 01363 898047 and 07833 897324

E-mail, [tim@thegreensweep.co.uk](mailto:tim@thegreensweep.co.uk)

[www.greensweep.uk](http://www.greensweep.uk)

## Bauer Power Services 4U

Your Local Cleaning Team

## Power Washing

- \* Patios \* Decking \* Driveways \* Pathways \* Steps
- \* Moving House Cleaning \* Ovens
- \* End of Tenancy
- \* Grass Cutting \* General Garden Tidying
- \* Basic Car Washing/Valeting
- \* Caravans

Call us on 07871 329 444

For a free no obligation quote

Email : [BPservices4U@hotmail.com](mailto:BPservices4U@hotmail.com)

DBS Certified



## **Sales of Chickens, Ducks, Geese, Quail, Peafowl, Guinea Fowl, Rhea Pygmy goats, Sheep, Pigs, Deer and Wallabies**

### **From our Poultry store we sell**

Poultry feed, drinkers, feeders, poultry housing.  
Poultry health supplements. Poultry treats and gifts  
Straw hay and shavings.

Raw dog food 'The farmers dog'

A range of feeds for all your small holding needs

Quail eggs, Chicken eggs

**Open Tuesday – Saturday 10.30am – 5.00pm**

**Just pop in!**

**Moon Ridge Farm Ex55aa 01392 851190**

**moonridgefarm.co.uk**



### *Lending with Heart and Mind*

Mid Devon District Council fund a not-for-profit loan scheme for homeowners and landlords\*.

**We understand the expense of maintaining your home and we work with you to take the stress out of funding repairs, improvements or adaptations.**

We see you as an individual, not a credit score.  
Our knowledgeable team of advisers will guide you through the process of applying for a home improvement loan.

For a no-obligation assessment  
or more information visit

[www.lendology.org.uk](http://www.lendology.org.uk) or call 01823 461099

Heatherton Park Studios, Bradford on Tone, Taunton, TA4 1EU

\*subject to eligibility



**NEWTON St CYRES**

**GOLF COURSE**

## **We are open**

The course is a slight departure from the norm. Although it is totally Pay & Play, 9 holes represents a fair challenge for every level of golfer.

- Pay and Play Golf
- Exciting Course
- Only 10 mins from Exeter
- Buggies Available
- On-line Booking
- Takeaway food and drink

**Twilight  
from 2pm**

Please call, or visit our website for directions

**Tel: 01392 851999**  
**[www.newtonstcyres.com](http://www.newtonstcyres.com)**

**CUSTOM BUILT 24 HOUR  
ONLINE BOOKING**



## Steve Parker asks you to look out for this new tree disease.

*Phytophthora pluvialis* is a fungus-like pathogen known to affect a variety of trees including western hemlock, tanoak, pine (*Pinus radiata*, *Pinus patula* and *Pinus strobus*) and Douglas fir. It was originally reported in Oregon, USA in 2013 on tanoak and Douglas fir and was subsequently identified as the pathogen responsible for 'red needle cast' of *radiata* pine in New Zealand.

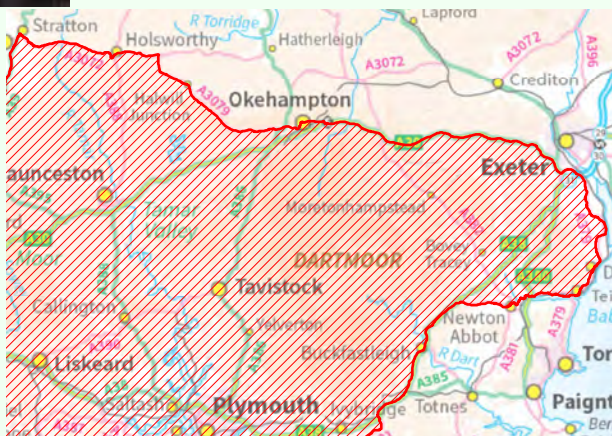


*Phytophthora pluvialis* was discovered in a woodland in Cornwall in September 2021, where it was found to be affecting mature western hemlock and Douglas-fir trees, but it can also affect tanoak and several pine species. Following extensive surveillance, further outbreaks have been found in Cornwall, Devon, Cumbria and at two sites in Scotland and at three sites in Wales.

The Forestry Commission is asking woodland manager, landowners and tree nurseries to be vigilant and the public too need to be aware of the problem.

The Forestry Commission has established demarcated areas where the felling, movement and other activity is controlled. One of these areas is in Devon and Cornwall. Although the village is not within

the controlled area, the disease is very close and here in Newton St Cyres there are several western hemlock and other fir trees in the arboretum and around the village. If you see any signs of disease in these trees please contact Steve Parker (Telephone :01392 851505 or email: [stephenparker@newtonstcyres-pc.gov.uk](mailto:stephenparker@newtonstcyres-pc.gov.uk)) who will report to the Forestry Commission's TreeAlert.



*The Northern boundary of the Devon and Cornwall demarcated area*

Peter Hawksley



# CLIMATE AND NATURE EMERGENCY

## What should Newton St Cyres do?

### Have your say at a **COMMUNITY FORUM**

Saturday 2nd April, at the Parish Hall, 9.45 am—1.00 pm.

#### Guest speakers include:

Catherine Broomfield of Exeter University – Food Supply and Food Poverty

Martin Rich – Devon Communities Together – Energy Use

Tara Bowers— Exeter Community Energy

Representatives from Sustainable Crediton, and

Local Medical Professional (tbc) - Climate Change and its impacts on Health

#### Questions to ponder:

What might we as a community need to come to terms with?

What might we as a community need to let go of?

What might we as a community genuinely need to keep?

What might we as a community need to re-learn?



As a prelude and in preparation there will be a 40 minute presentation of a talk by David Ramsden MBE entitled

**"Climate and Ecological Crisis: What's all the Fuss About?"** in the Parish Hall commencing **7pm Wednesday 23rd March**. This well informed, well researched, informative, and accessible talk will be followed by Questions and Answers.



For more information  
E: [newnewgroup@protonmail.com](mailto:newnewgroup@protonmail.com)



# March on the Farm



## Nature

Spring is springing. We've gone beyond the time when we've been saying how alarming it is to see daffodils out so early (and we did). We hit high spring a little early, that magical time of breathtaking beauty, the landscape transforming in the brisk air. Trees go from bare branches to fully clothed in a trice: it feels as if, had I sat and watched, that I could have seen the leaves unfurl like butterfly chrysalis, millions upon millions of exquisite origami shapes emerging as lovely new leaves.

Wild garlic clothes the damp woodlands, star-shaped flowers scent the air with fresh garlic: 'stinking lily' to the old Devonians, cooking ideas whirling in my mind. The birdsong becomes loud in the ever-earlier dawn, as birds stake out their territory to feed their families. Ravens make their ancient harsh cry if you come within 50 yards of their tree, even though the untidy nests are high in the top branches.

## Arable

New life emerges on the farm: farming works best when we roll with the rhythm of the seasons. Spring barley and oats jump out of the ground, urgently making use of the strengthening sun and warmth. By harvest, they will be only two weeks or so later than the autumn-sown crops sown five months earlier. They will yield less, and don't need so much nursing through the winter, when everything from mildew to deer have a go at the young leaves. They also give the opportunity for an overwinter fallow, good for wildlife, or a winter crop of kale, which kept some heifers fed over winter.

We are sowing a trial pea/ barley mix to make into a high protein silage, a by-product of vegetable oil production, to replace bought-in rape meal. It will be great to feed our animals from the farm, and in so doing put some goodness

back into the land from the pea roots, plus returning the goodness of the land to the land in their manure.

## **Cows**

We have calves everywhere: it's lovely to seem them skittering along, eagerly chasing the person with the milk. We let the calves graze as soon as they are suckling from an artificial teat. They are as excited as small children in a playground. We now have a childcare nursery (for human children!) on the farm, and the youngsters love to see creatures at the same phase of life as them.

When calving is over, we'll see how it went this year: our cows had a more sedentary indoor winter. How will that affect things? Cows indoors over winter is better for the soil (we didn't like to see the soil erosion), our team (trudging through the mud) and our neighbours (worrying about animals on muddy fields). The animals themselves seemed to thrive wintering out in the fresh air: they used to grow woolly coats and had lots of exercise, keeping them fit for calving. As with so many things in farming, we are grappling with complex processes where there is often no straightforward answer.

In our planning for the year ahead, we will try standing hay to feed outwintered animals. This is where we let the grass grow tall from late summer, and graze it one paddock at a time in the winter, knowing animals will trample some. That will protect the soil a little from the animals' feet. It'll become soil itself as it rots, better for the following crop, holding more rain, as well as sequestering more carbon.

Meanwhile, this spring, cows are enjoying the grass, settling down to munch the new leaves. I love the sound of a herd of cows grazing all together: it's the sound of many grass leaves tearing and the gorgeous aroma of grass. March is the balance point where we watch to see if grass growth picks up in time to feed all the hungry mouths. If the weather is warm, more grass grows than the cows can eat. If it's cold, grass growth slows, and we must feed some hay or silage to avoid eating too far into the leafy growth, as that slows grass growth further. If the grass is too young, it goes through the cows too quickly, making them all the hungrier, and their milk fat drops, making the cheese hard and less luscious. The balance tips quickly, and it takes several weeks on the farm to recover from a misjudgement.

## **Dairy**

In the cheese dairy, the cheesemaker reads the milk, where all those accumulated decisions land. How hard is the curd? How much moisture is it holding? It's the cheesemaker's judgement on the day, how fine to cut, when to take the whey off, whether to dry-stir the curd, by feel and sight and how fast the acidity develops. Tomorrow, after the day's make, we might see if fat and protein are out of line, or whether we need to change the scald or manage the starter differently.



It's only three months later we first grade the cheese, and then a year old when we see how it matures.

None of that makes the difference on the day of make. The cheesemaker's skill and commitment to reveal the loveliest cheese hidden in the vat of milk is so important. It's like Michelangelo finding David in the block of marble, only for every vat of every day.

## Recipe

I love this time of year when the wild food becomes more plentiful. Nettle soup is my favourite. I pick the tips of nettles, (with gloves!) before they get too stalky, some wild garlic leaves, and a few watercress leaves from the stream for flavouring. I love the gentle shellfish note of nettles, which I might bring out from a salmon stock I've got left over from a poached salmon with lots of vegetables that flavoured the stock. I boil some potatoes to thicken the soup. When they are tender, I throw in the washed leaves, boil for a few minutes till soft. Add cream, salt and pepper to taste and whizz up with a stick blender.

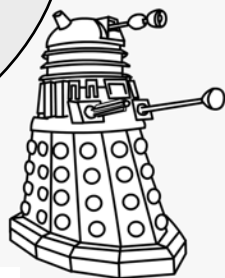
Serve with Quicke Buttery Cheddar grated on top to give a delicate and gentle country feast with Sourdough bread and Quicke's Lady Prue Butter (mixed goats and cow's milk butter).

Mary Quicke

## "Who's" is this?

Some people think it's just an unsightly old portaloo left behind by contractors when they were doing a job in the village. But others will tell you they know better. They say it's larger on the inside than the outside, with a host of rooms, a library and a swimming pool. It can travel anywhere in the universe in an instance, so how it finished up dumped on Station Rd close to the junction with the A377, no one really knows. As more proof that it really is Doctor Who's TARDIS, it can also suddenly disappear.

It has been in Station Road since November. We rang Event Hire Solutions to enquire why it was there, and, hey presto! - it had dematerialised by the end of the day





Ready for  
take off Dr.  
-Up? or  
down?



# Can we really do anything about climate change?

Many of us might feel that as individuals we've no chance of doing anything to reduce the impacts on our community of the climate and ecological breakdown.

Yet, we can make a difference by talking to others about it and sharing experiences, knowledge and even solutions. Climate change and the ecological breakdown are vast issues that are best not faced alone.

There's too much uncertainty, grief about what we are losing, worry about the future our children/grandchildren will inherit, to be able to bear this alone. We need to talk to people we trust, learn, and plan projects together. For some, online groups and organisations may be the first place to look, whether it's Friends of the Earth, the Conservative Environmental Network, Greenpeace, Extinction Rebellion, or the Campaign for the Protection of Rural England (CPRE).

We can also talk with others from the community in which we live. This is the primary reason Newton Environmental Wellbeing Group are organising a **Community Forum on the Climate and Nature Emergency**, to take place in the **Parish Hall Saturday 2<sup>nd</sup> April from 9.45 to 1pm**. The areas we intend to explore together are Energy, Health, and Food Security.

To help with this task, guest speakers will offer short perspectives of different aspect of the crises, how it might affect us adversely, and will be suggesting possible solutions to inform our discussions. Speakers will include:

Catherine Broomfield, Exeter University - food supply and food poverty

Martin Rich, Devon Communities Together - energy use

Tara Bowers, Exeter Community Energy

Representatives from Sustainable Crediton, and

A local medical professional (tbc) - climate change and its impacts on health.

After hearing from our speakers, we will break-out into small groups to discuss the issues presented to us and to begin generating ideas about how we might respond to them, together as a community.

In preparation, you might wish to ponder the following questions:

- What might we as a community need to come to terms with?
- What might we as a community need to let go of?
- What might we as a community genuinely need to keep?
- What might we as a community need to re-learn?

To help us prepare for the Forum there will be a 40-minute presentation of a talk by David Ramsden MBE entitled **"Climate and Ecological Crisis: What's all the Fuss About?"** in the Parish Hall commencing **7pm on Wednesday 23rd March**.

This will be followed by a questions and answers session. This talk by David will be well informed, well researched, informative, and accessible.

There is one more important thing - to celebrate what we are already doing and have done, including:

- Tree planting by Jack Brook in Langford
- Tree planting on land adjoining Newton Primary School
- Water quality monitoring on the River Creedy and Shuttern Brook
- Reinvigorating wild flowers in our churchyard by the 'Friends of the Churchyard'
- Amazing work by the 'Friends of the Arboretum'
- Creation of a Parish Biodiversity Map

These are but a few of our activities in and around the parish. Apologies for anything/or anyone we have missed out. Well done, everyone; we are doing very well!

You can get in touch with us at [newnewgroup@protonmail.com](mailto:newnewgroup@protonmail.com)



## BRAMPFORD SPEKE WOMEN'S INSTITUTE

Our speaker Stewart Raine did not disappoint on giving his talk on The Merry Wives of Saxe-Coburg (not Windsor as erroneously printed last month.) Details of the royal marriages in Europe during the 19<sup>th</sup> century and early part of the 20<sup>th</sup> century were

indeed of great interest.

## COUNTY EVENTS

### March 2<sup>nd</sup> and March 16<sup>th</sup> - Guided Bird Watching Cruise

Pamper Days at Exeter College are all sold out and the Whist Days at Longdown and Filleigh have been cancelled.

Our next meeting will be held in the village hall on **Wednesday 9<sup>th</sup> March at 2.30 p.m.** and the speaker will be **Rebekah Pearson** on "The Women's Land Army".

*Meetings are held on the 2<sup>nd</sup> Wednesday of each month. February, March, October, November and December meetings will be held in the afternoons in the Village Hall at 2.30 p.m. April to September meetings in the Village Hall at 7.30 p.m. Visitors are always welcome for a nominal sum of £4.*

Further information on our Institute can be obtained from Molly Luxton on 841270 or visit the DFWI website [www.devon.thewi.org.uk](http://www.devon.thewi.org.uk)



Est 1831  
**TUCKERS**  
**COUNTRY STORES**

Seedsman • Agricultural Merchants • Maltsters

Commercial Road, Lord's Meadow  
CREDITON, EX17 1ER (01363) 772202  
also at Ashburton  
[www.edwintucker.com](http://www.edwintucker.com)  
[crediton@edwintucker.com](mailto:crediton@edwintucker.com)

- Huge Selection of Pet Food
- Pet Beds, Toys & Other Accessories
- Composts & Fertilisers
- Plants & Shrubs
- Vegetable & Flower Seeds
- Horse Feed & Supplements
- Saddlery & Tack
- Clothing for Horse & Rider
- Leisure & Work Wear
- Fencing & Gates
- Homebrew
- Cards & Garden Gift Voucher
- Tools & Hardware
- Coal & Bottled Gas

**PET  
EQUINE  
GARDEN  
AND  
FARM SUPPLIES**

**OPEN 6 DAYS  
A WEEK  
MON - SAT  
8.30am - 5pm**

.....and much much more

# THE BEER ENGINE

**BREWERY PUB • NEWTON ST CYRES EX5 5AX**

**Good Beer  
Good Food  
Good Company**

For information regarding opening hours,  
menus and take-a-way beer please visit our  
website: - [www.thebeerengine.co.uk](http://www.thebeerengine.co.uk). or our  
social media pages.



# **ADRIAN PAYNE CHIMNEY SWEEP**

Your local sweep (Efford)

HETAS APPROVED

NACS REGISTERED

CERTIFICATES ISSUED

Telephone 01392 851199

[www.adrianpaynechimneysweep.com](http://www.adrianpaynechimneysweep.com)



# **A. White & Sons** **Funeral Directors**

Albert Road, Crediton,  
Devon EX17 2BZ

**(01363) 772043**

*Members of the N.A.F.D. and S.A.I.F*  
*Prepayment Plans Available*



# **LEWIS'S**



PARTNERS IN EUROPE'S BIGGEST  
INDEPENDENT ELECTRICAL  
BUYING GROUP

**EURONICS**

*Showrooms & Registered Office:*

HAWKINS WAY, LORDS MEADOW

CREDITON, DEVON EX17 1HY

**Telephone: (01363) 773246**

Mon - Fri 8.30-5.30

Sat 8.30-4.00

# **CENTRAL HEATING** **and DOMESTIC PLUMBING** **N. A. GUPPY Ltd**

General plumbing and small-bore heating  
(gas, oil or solid fuel).

Large or small contracts.

Inquiries invited. Estimates free.

Specialists in lead work.

Please contact : **Mr N Guppy**  
Croyland, Brampford Speke, Exeter

**Tel : 01392 841 336**

# **Newton St Cyres toddler group**

Come along and join us every  
Wednesday in term time, lots of great  
toys to play with. Stories to enjoy,  
craft session and activities to try.  
It is great family fun.

Our family sessions are £2 a time and  
run from 9:30-11:30am. The price  
includes a drink and a snack.

We would love you to join us at Newton St  
Cyres Primary School



**Contact:**

**Anna Bonnett**

**07930403375**

[newtonnappies@outlook.com](mailto:newtonnappies@outlook.com)  
or see our facebook page  
**Newton Nappies**

# Do You Remember.....March?

## **MARCH 1972**

### **Power Cuts**

The power cuts due to the miners' strikes were affecting the village. SWEB were being helpful with the timing of the cuts so that fridges etc did not defrost. In the church the piano had been used instead of the organ and they had to hand wind the clock.

### **Vacancies**

At the annual meeting of the Parochial Church Council, they would be looking for a new secretary.

Riding for the Disabled was to start at Langford and a plea went out for helpers.

### **NSC Players**

NSC Players started up but only one man had shown interest among many girls.

### **Coffee Club**

Easter parties were planned by the Coffee Club, children under 11 years 3.30-6.30 at a cost of 12.5p to include a juggler and a Punch and Judy show.

### **New Court Orchard Wardens**

The West family were welcomed as the new Wardens for Court Orchard.

### **Young Farmers**

The Young Farmers were advertising their Pyjama Dance with admission prices set at 35p for those in their nightwear and 40p for everyone else.

## **Recreation Ground Show**

Schedules were being prepared for the Show at the Recreation Ground and there was talk about reviving the Village Fete.

## **MARCH 1982**

### **A377 improvements?**

The Devon Structure Plan had made no mention of any improvements to the A377.

### **Annual Parish Meeting**

The Annual Parish Meeting had invited speakers from South West Water and Community Health Council.

### **Art Group**

The art group watched a demonstration of glazing by David Samuels which involved using thin washes of transparent colour.

### **Women's Institute (WI)**

The WI heard a talk by PC Wilkins accompanied by his Alsatian "Blue".

### **Mother's Union**

The Mother's Union was given a most inspiring talk by Mrs. Twiggs in February on "What is the Mothers Union?"; it was much appreciated by all members. Many thanks also to Nora Bray for frequently having us in her home for our meetings.

### **Church Tower**

The Church Tower was lit for the 25th Wedding Anniversary of Michael and Jean Young and the birthday of Sylvia Bull.

## **Tennis Club**

The Tennis Club were considering an entry into the East Devon League.

## **For Sale**

Learning to type? - The Typewriter which produced over 10 years of "The Newton Wonder" has been paid off and is now for sale. It's a standard office Smith and Corona with 15" carriage and still in reasonable working order. Come and see it at the Vicarage.

## **MARCH 1992**

### **Playgroup**

The Playgroup had put out an appeal for playpens.

### **Twinning**

The Twinning group held their monthly event with a walk at Bantham.

### **Scouts**

NSC Scouts we're having a busy time which included preparation for their pantomime.

### **Newton Wonder Volunteers Wanted**

Last month's appeal for volunteers was answered by Doreen White and Lynette Tala who agreed to type the Newton Wonder every month. We were very fortunate they both responded to our appeal as otherwise there may have been a gap in the publication. Joan Griffiths of Half Moon also offered to type, we were glad to have her as backup.

### **Court Orchard Wardens**

Court Orchard residue to all join to thank Sylvia and Douglas West for the party they gave us to celebrate their

20 years as Wardens. It gave the newcomers a chance to meet the old established and the excellent meal was followed by entertainment in Martha and Ned's Devon Dialect (always a mystery to the uninitiated).

### **Recreation Ground**

The Recreation Ground Club is having a Wine and Cheese evening with the "Guinness Girls" on Friday 20th March Tickets £1. Come and have your free taste of Guinness, also a taste of Quicke's cheese and Ice-Cream.

### **NSC Handicraft Group**

Thank you to those who responded to our appeal for wool. We currently have twelve workers and are progressing with our cot blankets for Children's Hospice in Romania. Over the last five years we have raised £1,300 for the church funds by the sale of our handiwork at various functions.

## **MARCH 2002**

### **Crown and Sceptre**

A meeting was held in the Crown and Sceptre chaired by Tom-Langdon-Davies to lobby for Government money for local projects.

### **New Footbridge**

Devon County Council have replaced the footbridge at Half Moon across the River Creedy at a cost of £35,000 and the banks of the river beneath have been reinforced with massive boulders. The new bridge owes much to persistent campaigning by the two people who live near the bridge, Doctor Ann Dean and Doctor Paul Westwood senior partner at

Newcombe's surgery Crediton. There was also support from the Crediton branch of the 'Ramblers' Association.

### **New Monthly Market**

A monthly Saturday Market was started on 23rd March with a monthly Draw. Profits would go to the Parish Hall.

### **Recreation Ground Sporting History**

There was an interesting article, which followed the one by John Durrant the previous month about the Recreation Ground, by Henry Gliddon who updated the readers on some of the sporting history.

## **MARCH 2012**

### **Crown and Sceptre**

The Crown and Sceptre is under new

management. Freshly cooked local produce served in a 40-seat restaurant at reasonable prices. Dogs on leads welcome, regular live bands, monthly curry and quiz nights, Sunday roasts.

### **Competition**

Scarecrow competition sponsored by Creedy Home surveys. Theme - 'Royalty' - any aspect, Fairytale, Film, Pop, Literature etc Saturday 5th May until Sunday 13th May. Entry fee £3. All monies raised and donations will go to Cancer Research UK.

### **Devon Oil Collective (DOC)**

On 1st February, the Community Council launched its new ethical social enterprise project aimed at tackling fuel poverty across rural Devon.

# **JTA**

## **B u i l d i n g & P l a s t e r i n g** **Exeter**

### **Quality Building at Affordable Prices** **All aspects of building work undertaken**

**Telephone: 07764 938244**

**Evening: 01363 866060**

**Email: [jamieacton@hotmail.com](mailto:jamieacton@hotmail.com)**



## Crediton In & Around Launches Online Newsletter

The Crediton In & Around website has launched a monthly online newsletter to keep you updated with local events, activities, articles and business news.

The website was set up in 2020 by the Crediton Heart Project to promote everything going on in our area. It includes listings of shops, services and community groups, a What's On calendar, articles by local people and a section for visitors.

The website is run by a team of volunteers who are regularly adding new content, so the newsletter will provide a convenient summary of what's new on the site. It will highlight upcoming events and activities in Crediton and the surrounding villages, as well as showcase our brilliant local businesses with special offers for our subscribers.

The newsletter will also feature a recent article from the website. We publish an article every week and have been amazed by the range and quality of the contributions we've received. They include regular columns on gardening and walking, reports on local arts and environmental projects, features on local businesses and stories about our local history.

These articles really demonstrate what a special area we live in, with such a rich history, beautiful landscape and talented people.

To receive the newsletter, just visit the website at [www.creditoninandaround.co.uk](http://www.creditoninandaround.co.uk), scroll to the bottom of the home page and enter your email address in the 'subscribe' box. You can unsubscribe at any time.

If you would like to include your business, event or article on the website get in touch at [info@creditonheart.org](mailto:info@creditonheart.org)

Rosemary Stephenson  
Crediton In & Around editor

*Crediton In&Around is run by the Crediton Heart Project (registered charity no 1189549) and supported by Crediton Town Council, Devon County Council and the National Lottery.*

# UPTON PYNE & DISTRICT GARDEN CLUB



Monday March 21st @ 7.30 pm in Village Hall

Our speaker this month is -  
**PENELOPE TOWNSEND** with a talk on  
**"GARDENING WITH JANE AUSTEN"**



*The Gardens at Jane Austen's home, Chawton Cottage*

*Refreshments*  
*Raffle*  
*Everyone Welcome*  
*(Non-members £4)*

**Something to look forward to....**

**April 25<sup>th</sup> John Walters -Devon Wildlife Author & Illustrator**

**May 7<sup>th</sup> SPRING FLOWER SHOW**

**May 16<sup>th</sup> Talk by Eve Tigwell - Garden Birds**

**June 8<sup>th</sup> Coach Trip -Mapperton House & Garden**



For details please call Jilly 01392 851634

Our full programme of events will be available at our February meeting when our annual membership of £12 will have been payable, but as always, you can join whenever you wish, or you may choose to come to selected talks only for £4pp. Our other events are also open to non-members who will be made very welcome.

Also available at the March meeting will be a 'Seed Swap' if you have any unwanted seeds to share around, and the schedule for our Spring Flower Show.

Whilst we are coping with the Covid pandemic we will be observing Government rules at the time of the event.

# CELEBRATING?

**CHRISTENING**

**BIRTHDAY**

**ENGAGEMENT**

**WEDDING RECEPTION**

**WEDDING ANNIVERSARY**

**Why not consider the Parish Hall for your venue?**

**It's local, not expensive, has its own car park, two rooms and a new kitchen**

**Also has wi-fi and suitable for club and business meetings**

**For further details, please contact Mary Long :-**

**Tel:- 01392 851624**

**E-mail:- [maryglong@btinternet.com](mailto:maryglong@btinternet.com)**



## Credition

A Sure Start Children's Centre



Do you have a child under the age of 5?

Or are you expecting your first baby?

Become a member of  
Credition Area Children's Centre

We offer free play and development  
sessions for children

With support and information  
for local families

Contact us by ....  
Telephone: 01363 777219 or 776903

Email: [credition@actionforchildren.org.uk](mailto:credition@actionforchildren.org.uk)

Facebook: search for  
Mid Devon Children's Centres

<http://www.actionforchildren.org.uk/credition-childrens-centre>



**Jonathan Wood  
Veterinary Surgeon Ltd.**

**01363 772319**

[www.jwoodvet.co.uk](http://www.jwoodvet.co.uk)

**24hr Emergency Service.**

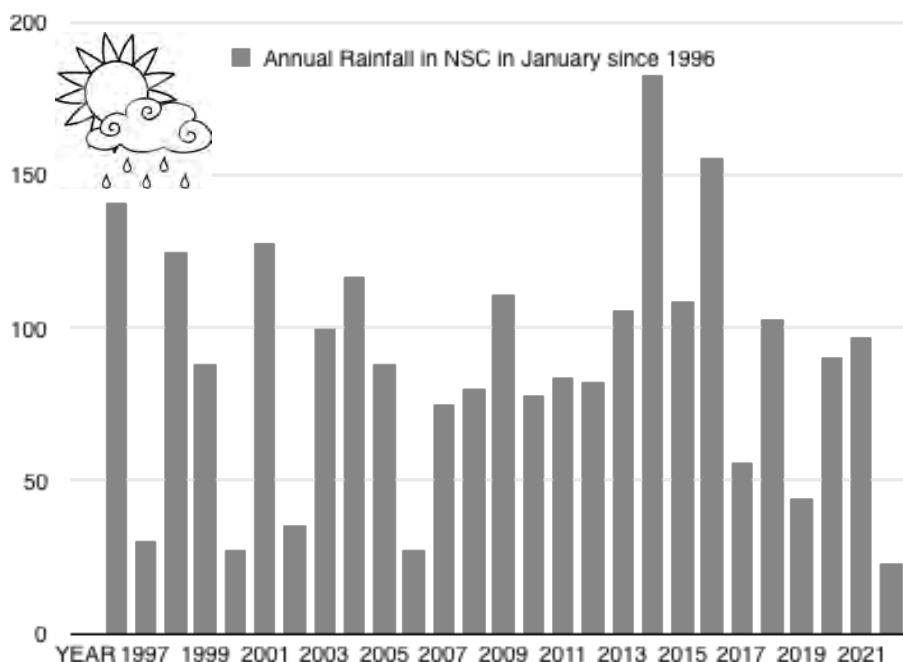
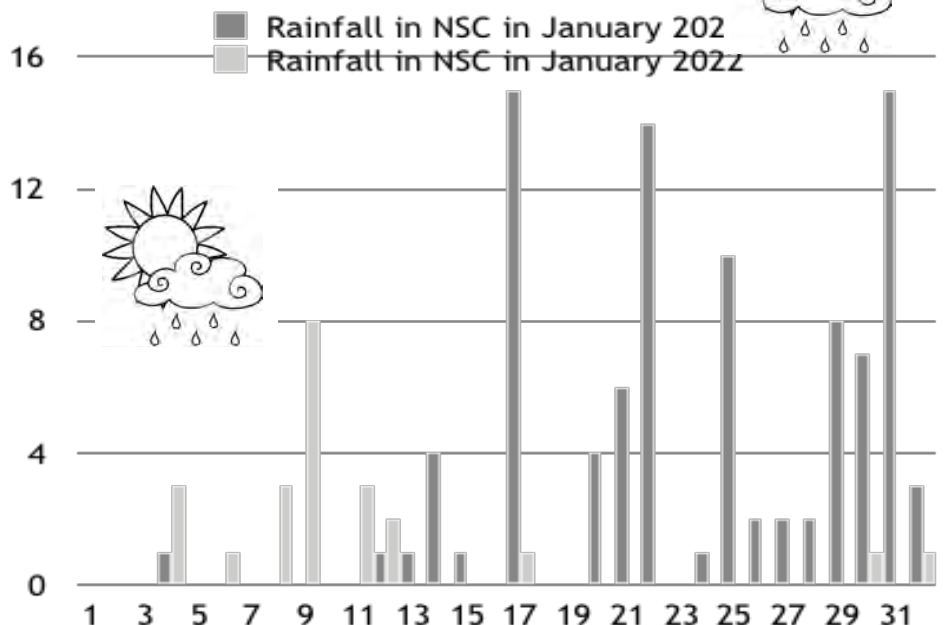
As an RCVS accredited practice, we provide a friendly, caring, professional service for companion animals, equine and farm patients.

We offer hydrotherapy and rehabilitation, modern ultrasound equipment, in house laboratory service, a mobile clinic and much more. For full details visit our website.

We are proud to be accredited by the international cat care organisation as silver level cat friendly clinic.

# The Weather

in Newton St Cyres



## CREDITON CAR & M.O.T. CENTRE

776076 (SALES)

01363 772515 (SERVICE)

[www.creditoncarcentre.co.uk](http://www.creditoncarcentre.co.uk)

HONDA SPECIALIST

QUALITY NEW & USED CARS

D. WORDEN & A. DAFTERS

## COMPUTERS

### *Mended - Upgraded - Replaced*

Printers, wi-fi, networking, broadband - supplied, installed, checked, changed, demonstrated.

Changeover service to help you, your programs and your data move to a new computer.

Local, friendly, professional, unbiased.

Home visits or remote link-ups, including evenings or weekends, to suit you.

Contact **Ian Gunter** on **01392 851841**

Exeter's Traditional Family Independent  
Funeral Directors For Over 100 Years

## M. Sillifant & Sons

Martin Sillifant & Son

*A phone call will obtain our personal attention*

**01392~272688**



19-20 Holloway Street,  
St Leonard's,  
Exeter. EX2 4JD



[www.sillifantandsons.co.uk](http://www.sillifantandsons.co.uk)

## Bringing Church and Community Closer

The possibility of forming a charitable trust aiming to help to bring the Church and community closer together was discussed at a recent meeting chaired by Tom Langdon-Davies.

It was felt that there was a need for there to be an organisation which had the power to raise funds, promote activity and make grants to groups and individuals.

Grants could be to help improve the church facilities and support the Parochial Church Council in maintaining the building as well as for the promotion of activities and events.

The Trust should be independent, working alongside the Parochial Church Council and the vicar.

It is intended that there will be a consultative meeting, to which all parishioners will be invited. The details will be in next month's Newton Wonder.

# The Parish Church of St Cyr and St Julitta



## Thank you!

On behalf of Mary and myself, I would like to say a huge thank you for the deeply warm welcome that we have received since we stepped over the threshold of the Rectory. So many cards, and so many very kind and generous gifts. It has been an exciting and somewhat daunting whirlwind of meeting people and beginning to get to know the area, the lanes and villages. And the many church buildings - each with their own particular style, but all filled with such peace and prayer.

My licensing service at the beginning of February was a real joy, and I cannot thank enough all those involved in making it an unforgettable moment. The church at Thorverton was filled with wonderful music, people and a little bit of pageantry! A time to reflect on the past, with so many coming up from Dawlish, and to think about the future - surrounded by representatives from all the parishes, and colleagues from the wider Crediton area.

So, thank you from the bottom of our hearts, and we look forward to our time in these parishes.

All blessings

Tim

**Revd Tim Collins**  
**Priest-in-Charge**  
**Netherexe Mission Community**

## Getting ready for the Easter bunnies...

Some people say that Christmas is an old pre-Christian festival that the Church took over, whereas Easter is a 'proper' Church festival, albeit one increasingly swamped by chocolate eggs and bunnies. There is some truth in both views, but I am probably less concerned about the commercialisation of Easter than many people of faith. Maybe that is, in part, because I want to have my cake and eat it (quite literally) I want the Easter services and I am very partial to a decent chocolate egg. I also think that I am not so worried about Easter being "overshadowed" in popular culture because it is still very much here for anyone that wants to find it- and I am quite happy with the Christian life being countercultural.

Whilst we still have a while to go until Easter Sunday, the season of Lent is already stretched before us- offering us a direct and personal challenge to reconsider what life, and especially our own life, is all about.

Ash Wednesday (March 2<sup>nd</sup>) has always been right up there as one of my favourite dates in the church calendar. Not because it has great hymns or services that engage all ages- but because it is a very concrete and personal opportunity for me to take part in 'ashing' - a reminder that 'from dust we are made and to dust we shall return'. I have always found this a very powerful and pretty sobering way to begin preparation for lent.

And then there is the tradition of fasting or giving things up for Lent. Never having been one for fasting, I have enjoyed a number of different ways to mark Lent.

Many years ago, back when we used to put rubbish in our black bin every week (remember that?) - we decided to give up waste, and spent a month limited to one small bag. We had to shop differently, cook differently, and it was in that year we became fully aware of the waste our lifestyle produced. For another year I gave up speeding. At the time I used to commute through small villages, and my discipline was to pray whenever I noticed the speedometer topping over 30 mph.

It not only resulted in much more prayer, I probably also became a little more considerate as a driver. I won't focus on the year that I gave up coffee, but I do not plan to do that again until children leave home. But I do recall a few years when I took part in Lent Bible studies. This was always a bit of an inconvenience if I am honest, trekking out to someone's house one night a week. Yet it was always deeply rewarding and meant having really valuable encounters with neighbours and fellow churchgoers with whom I had never really shared a deep spiritual conversation before.

So, this year I will be glad of all the lovely chocolate eggs we have available, and not worry one bit that they are somehow distracting us from the Easter season- with Ash Wednesday and Lent before us we have all the personal challenge, we need to prepare ourselves for Easter once more, well before we set foot inside church on Holy Week.

Simon Harrison Churchwarden, Rewe with Netherexe.

**Coffee and Chat  
in Church March 6<sup>th</sup>  
10.30**

**This is no more, no less  
than what it says on the tin!**

**A warm welcome and get together  
with refreshments**

**Some Lent Conversations**

I would like to offer a chance for some 'getting to know you' sessions across the parishes during Lent.

I was thinking that a formal Lent Course (there will be a number of those across the area being offered by other churches, details to follow soon) was maybe not the best way forward this year, given that we are still working our way out of the pandemic, and learning to live a new 'normal'. I recognise, too, that we have all been in somewhat of a 'wilderness' time, what with covid and with you all supporting each other during the vacancy.

I also thought that it would be good to have a number of relaxed informal 'conversations', as a way for me to get to know people, and for people to get to know me.

So, given all of that, we are offering one gathering in each of the parishes throughout Lent - the dates for these are set out below. There will be a loose structure or framework to the sessions based on a book by Stephen Cottrell - *Christ in the Wilderness* - which uses the art of Stanley Spencer, to consider and explore Christ's experience in the wilderness, the changes that resulted and how we might respond to these things. But, in essence, I would hope that the sessions are a vehicle for us all to begin to spend time together. While the framework will be the same, I am sure that the resultant conversations will be free-flowing and wide-ranging!



**The sessions are open to one and all, and you can join any one of them, even if not in your own area. It will be so good to see you there**

Thursday	10 <sup>th</sup> March	10.30am	Stoke Canon, hosted by Fi Thompson, The Old Vicarage, Stoke Canon (followed by soup lunch)
Thursday	10 <sup>th</sup> March	2.30pm	Newton St Cyres, hosted by Sue Browne at 1 Glebland Villas, Sand Down Lane, Newton St Cyres
Tuesday	15 <sup>th</sup> March	7pm	Brampford Speke, hosted by Douglas Ford at The Limes, Brampford Speke
Thursday	17 <sup>th</sup> March	2.30pm	Cadbury, hosted by Catriona Fursdon at Terley Farmhouse, Cadbury
Friday	18 <sup>th</sup> March	2.30pm	Rewe, hosted by Simon Harrison at The Old Post Office, Rewe
Thursday	24 <sup>th</sup> March	10.30am	Thorverton, meeting at the Thorverton Arms
Friday	1 <sup>st</sup> April	10.30am	Upton Pyne, hosted by Veronica at 2 Robins Court, Upton Pyne,

**All blessings**

**Tim**

# Newton St Cyres Church Diary

## March

2<sup>nd</sup> Ash Wednesday Service 10.30

6<sup>th</sup> Coffee and Chat get together 10.30

10<sup>th</sup> Lent Conversations 2.30 (1 Glebeland Villas)

12<sup>th</sup> Coffee morning (Parish Hall) 10.30-12.00

22<sup>nd</sup> Morning Prayer 9.00

27<sup>th</sup> Holy Communion 9.30

**ST CYR COFFEE MORNING**  
**MARCH 12th, 2022 10.30 - 12.00**  
**PARISH HALL**  
Newton St Cyres



Come and join us for coffee and chat,  
stall and raffle.

*All funds in aid of the Church.*

## SERVICES & INFORMATION MARCH 2022

The Netherexe Parishes - A Mission Community in the Diocese of Exeter

### Wednesday 2 March Ash Wednesday

10:30 am	Ash Wednesday Service	Newton St Cyres	TC
07:00 pm	Ash Wednesday Service	Thorverton	TC

### Sunday 6 March Lent 1

09:30 am	Holy Communion	[CW]	Thorverton	KR
10:00 am	Informal Gathering		Stoke Canon	LF
10:00 am	Coffee, Cake & Conversation		Brampford Speke	Lay Led
10:30 am	Coffee and Chat		Newton St Cyres	Lay Led
11:15 am	Informal Service		Cadbury	Lay Led
11:15 am	Café Church		Rewe	Lay Led

### Sunday 13 March Lent 2

10:00 am	Informal Service		Newton St Cyres	Lay Led
11:15 am	Holy Communion	[CW]	Upton Pyne	GC

### Sunday 20 March Lent 3

09:30 am	Holy Communion	[CW]	Brampford Speke	GC
11:15 am	Holy Communion	[CW]	Cadbury	TC
05:00 pm	Holy Communion	[CW]	Stoke Canon	MSS

### Sunday 27 March Lent 4 Mothering Sunday

09:30 am	Holy Communion	[CW]	Newton St Cyres	TC
10:00 am	Mothering Sunday Service		Thorverton	Lay Led
10:00 am	Mothering Sunday Service		Stoke Canon	Lay Led
10:00 am	Mothering Sunday Service		Brampford Speke	Lay Led
11:00 am	Mothering Sunday Service		Upton Pyne	TC & Lay Led
11:15 am	Mothering Sunday Service		Rewe	Lay Led
05:30 pm	Mothering Sunday Service		Huxham	TC & Lay Led

**Evening Prayer:** Every Tuesday 6:00 pm in Rewe Church

*Abbreviations: CW = Common Worship BCP = Book of Common Prayer*

This information will also be available via our website at [www.netherexe.org](http://www.netherexe.org) see "Please Note" section of the homepage.

### Who's Who .....? Abbreviations Key

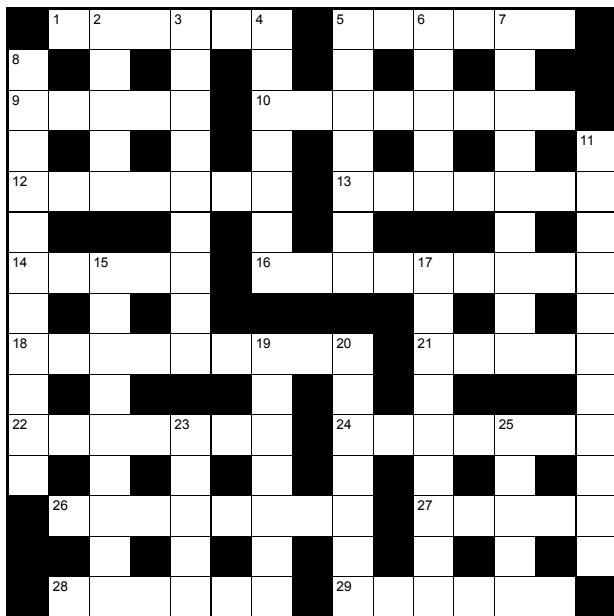
TC	Revd Tim Collins	LF	Laura Ford [Reader]
JH	Revd Julia Hocking	KR	Revd Preb Kathy Roberts
TL	Revd Tony Lane	MSS	Revd's Michael & Sharon Simpson
GC	Revd Preb Graham Cotter	TBC	To be confirmed.
SN	Sheila Newton [Reader]		

For more information about the Netherexe Parishes please see [www.netherexe.org](http://www.netherexe.org) or contact:

Mrs Juliette Lea [Administrator]	Mr Peter Shepherd [Administrator]
Tuesday & Thursday [09:00 – 15:00]	Monday & Wednesday [09:00 – 13:00]
Tel: 07594 714590	Tel: 07551 844321
Email: <a href="mailto:administration@netherexe.org">administration@netherexe.org</a>	Email: <a href="mailto:administration@netherexe.org">administration@netherexe.org</a>
Correspondence: The Netherexe Parishes, Church Office, St Mary Magdalene Church, Stoke Canon, Exeter, EX5 4AS.	

**Private Prayer**  
**The Church is now OPEN**  
**six days a week**  
**(not Friday)**

# Cryptic Crossword



## ACROSS

- 1 Writing mostly about millions having to economise (6)
- 5 Walk ostentatiously, for example, around tree (6)
- 9 Specialist has no power to wield (5)
- 10 Two pubs I caught being uncivilised (8)
- 12 He walks? Right, he walks (7)
- 13 Zeppelin broadcast's with it (7)
- 14 It enables you to feel courage (5)
- 16 One group of soldiers or another found in club with hero (9)
- 18 Composition's beauty captivating a majority of those attending (9)
- 21 Gas making some in Forfar go nuts (5)
- 22 Getting close to revolting Grannie (7)
- 24 Right way by which to leave and go back (7)
- 26 Against accepting present – that ultimately is understandable (8)
- 27 Upset as fun is ruined (5)
- 28 Director and writer, we hear, of story of Martian invasion (6)
- 29 In court, long for seal of approval (6)

## DOWN

- 2 The very best stuff is around the east (5)
- 3 Let client exercise his mind (9)
- 4 Local food (3,4)
- 5 Menial worker in tavern's drunk (7)
- 6 I will be entertained by celebrity for part of flight (5)
- 7 Coming down in flames in middle of Belgium (9)
- 8 Bring her one different type of pattern (11)
- 11 Two possibilities for Windows easily decided? (4-3-4)
- 15 To set up with Mother taking part is a palaver (9)
- 17 Giles can somehow swallow a painkiller (9)
- 19 Left, say, with not so much drunk (7)
- 20 Unpredictable fellow imprisons traitor (7)
- 23 One needs wood that's perfect (5)
- 25 Avoid commercial in the evening (5)

Set by Alberich

# Sudoku

All you have to do is fill in the squares so that each row, each column and each square contain all the numbers from 1- 9.

3	5		7	1			9	
					9		8	
						7		
	2	1			7			5
	6	3				9	7	
9			8			6	1	
		5						
	9		4					
	1			6	5		4	9

© Web Sudoku 2022 - [www.websudoku.com](http://www.websudoku.com)

## Solution to the February 2022 Cryptic Crossword

1	C	O	N	F	I	S	C	A	T	6	E		7	L		8	T
	R		L		K		R		P	9	O	L	I	S	H		
10	C	A	L	A	M	I	T	I	E	S							
	N		N		P		D		I		11	P	E	O	N		
	G				P				L				R		D		
12	B	E	S	I	D	E	S	14		15	C	O	M	R	A	D	E
	E		M				16	R	A	D	O	N			T		R
17	F	E	A	T				I		W			18	E	U	R	O
	O		T			19	A	N	G	E	20	R			R		U
21	R	E	T	R	A	C	T		22	R	E	D	R	E	23	S	S
	E		E				T				T					O	
24	H	A	R	D			R	25	C		R		26	F		C	
	A		I			27	E	X	U	B	E	R	A	N	C	E	
28	N	A	N	T	E	S		B		A		R		E			
	D		G			29	S	W	E	E	T	H	E	A	R	T	

# **Do you need any help in these times?**

**You are not alone**

**For any type of help contact Damien Hodge  
on 851111 or email  
damienhodge@newtonstcyres-pc.gov.uk or  
contact your neighbourhood watch  
deputy. They are here for you.**

## **Neighbourhood Watch Deputies**

Tim Sedgwick	Godolphin Close	2	851223	twsedgwick1@supanet.com
Sue Gee	Church Area	Glebe House	851164	asgee@btinternet.com
Tom Dowle	Court Orchard	24	851704	tomdowle@live.co.uk
Chris Lee	Langford Road	Greenlands	851280	
Mike Kersey	Half Moon	12	851603	
Sandy Fleming	Newton House	12	851646	afleming12@btinternet.com
Wayne Meeton	Norton	Glenacre Sweetham	851954	wayne@wvmstudio.com
Derrick Rhydderch-Evans	Pump Street	Old Beams	851443	derrickrevans369@btinternet.com
David Vallance	Sand Down Lane	Manesty	851266	davidvallance2@icloud.com
Jacqui Ward	Smallbrook	2 Broadgate Cottage	851918	Jacquiward30@yahoo.co.uk
Jill Hawksley	Sweetham	Station Cottage	851269	peterbrew@aol.com
Clive Wootton	West Town	4 Meadowlands	851428	hollywallydoda@outlook.com
Alan Hancock	Woodlands		851744	
Damien Hodge	Tytheing Close	2	851111	damienhodge@newtonstcyres-pc.gov.uk
Geoffrey Jackson	"The Village"	Shaplands Cottage	851551	megalops@btinternet.com

*For help, further information or to submit a report please go to the website or contact the  
NSC Parish Council Co-ordinator Damien Hodge tel: 01392 851111  
email: damienhodge@newtonstcyres-pc.gov.uk*

# A WEEK IN THE PARISH HALL

The Hall is open and we would welcome further bookings. There are though a few restrictions, particularly a limit to numbers in the Main Hall to 60 and in the Club Room to 20. For enquiries and bookings, please contact Mary Long (01392 851624; [maryglong@btinternet.com](mailto:maryglong@btinternet.com)).

Regular events that have restarted are indicated below, together with contact details. We are expecting other regular activities to restart shortly.

Tuesday (weekly)	Line dancing	7.30 pm	Paula Benford	01392 210830	pbenford45@gmail.com
Tuesday (fortnightly)	Young Farmers Club	8.00 pm	Katie Davie	07706 760500	kmdavie@gmail.com
Wednesday (monthly)	History Group	7.30 pm	Jean Wilkins	01392 851337	jeanwilkins1@btinternet.com
Thursday (monthly)	Mah Jong	2.00 pm	Geoff Jackson	01392 851551	megalops@btinternet.com
Thursday (weekly, except 2 <sup>nd</sup> in month)	Ballroom dancing	Evening	Wendy Richards	07949 141800	wendy@dancetwexeter.co.uk
Thursday (2 <sup>nd</sup> in month)	Exe Valley Bird Club	7.00 pm	Kevin Smaldon	07710 427817	kevin.smaldon@btinternet.com
Thursday (monthly)	Parish Council	7.00 pm	Jane Hole	01392 851148	parishclerk@newtonstcyres-pc.gov.uk
Friday (some weeks)	Art class	10.30 am	Sue Rose	01363 772284	suerose9@hotmail.com
Friday (weekly)	Table tennis	7.15 pm	Roger Wilkins	01392 851337	rogerwilkins1@btinternet.com
Saturday (second in month)	Coffee morning (for Church and other organisations)	10.30 am	Church Sue Browne	01392 851460	suecbrowne@gmail.com
			Others Roger Wilkins	01392 851337	rogerwilkins1@btinternet.com
Saturday (some months)	Model train group	2.00 pm	Ann Feetham	01392 215837	annfeetham@virginmedia.com



# WHO'S WHO IN THE VILLAGE

<b>Priest-in-Charge</b>	Rev Tim Collins	
<b>Church Wardens</b>	Sue Browne, 1 Glebelands, Sand Down Lane	<b>01392 851460</b>
<b>PCC Hon Secretary</b>	Pita Burt <a href="mailto:pitaburt@gmail.com">pitaburt@gmail.com</a>	<b>01392 851410</b>
<b>PCC Hon Treasurer</b>	To be appointed	
<b>Electoral Roll Officer</b>	Jen Holt, 21 Woodlands	<b>01392 851521</b>
<b>Tower Captain</b>	Mary Quicke - <a href="mailto:mary@quickes.co.uk">mary@quickes.co.uk</a>	<b>07729 844945</b>
<b><u>DOCTORS (Crediton)</u></b>	Redlands Primary Care Joseph Locke Way Crediton EX17 3FD	<b>01363 727111</b>
<b><u>NEWTON WONDER MAGAZINE &amp; WEBSITE</u></b>	Editor – Peter Hawksley Email: <a href="mailto:editor@newtonwonder.net">editor@newtonwonder.net</a>	<b>01392 851269</b>
<b><u>PARISH COUNCIL</u></b>	Chairman - Jim Enright Clerk - Jane Hole	<b>01392 851859</b> <b>01392 851148</b>
<b><u>PARISH HALL</u></b>	Chairman – Roger Wilkins Booking Sect - Mary Long, - <a href="mailto:maryglong@btinternet.com">maryglong@btinternet.com</a>	<b>01392 851337</b> <b>01392 851624</b>
<b><u>PRIMARY SCHOOL</u></b>	Head of Teaching – James Akhurst Administrator - Maxine Pople	<b>01392 851267</b> <b>01392 851267</b>
<b>Newton Nippers Pre-School</b>	Contact the school	<b>01392 851267</b>
<b>Newton Nappies Toddler Group</b>	Emily Rickard	<b>01392 851899</b>
<b><u>RECREATION CLUB</u></b>	Chairman - Tony Lewis, 80 Wrefords Lane, Exeter Booking Secretary - Mrs Wendy Lewis, 80 Wrefords Lane, Exeter	<b>01392 432287</b> <b>01392 432287</b>
<b>Newton Revels</b>	Chairman - Eric Fee - <a href="mailto:ericwfee@hotmail.com">ericwfee@hotmail.com</a>	<b>01392 851595</b>
<b>Art Group</b>	Jenny Hallam, <a href="mailto:jennyhallam6@gmail.com">jennyhallam6@gmail.com</a>	<b>7787383658</b>
<b>Neighbourhood Watch</b>	Damien Hodge, 2 Tytheing Close <a href="mailto:damien.hodge@centraxgl.com">damien.hodge@centraxgl.com</a>	<b>01392 851111</b>
<b>Footpath Warden</b>	Steve Parker	<b>01392 851505</b>

<b>Community Police</b>	PCSO Nicola Payne, Police Station, Crediton Nicola.payne@devonandcornwall.pnn.police.uk	<b>Dial 101</b>
<b>District Councillor</b>	Graeme Barnell, Halses, West Town Rd. Email: <a href="mailto:gbarnell@middevon.gov.uk">gbarnell@middevon.gov.uk</a>	<b>01392 851308</b>
<b>County Councillor</b>	Margaret Squires	<b>01363 84337</b>
<b>Local M P</b>	Mel Stride <a href="mailto:mel.stride.mp@parliament.uk">mel.stride.mp@parliament.uk</a>	<b>01392 823306</b>
<b>Football Club</b>	Mark Smaldon	<b>7733455177</b>
<b>Friends of NSC Station</b>	Chris Southcott	<b>01392 851569</b>
<b>Luncheon Club</b>	John Salter, Hill Park	<b>01392 851346</b>
<b>Mah Jong Club</b>	Geoff Jackson <a href="mailto:megalops@btinternet.com">megalops@btinternet.com</a>	<b>01392 851551</b>
<b>Newton Ramblers</b>	Rosemary Chambers	<b>01392 851400</b>
<b>Tennis Club Secretary</b>	Laura Leigh	<b>01647 24259</b>
<b>Twinning</b>	Lorraine Mitchell	<b>01392 851596</b>
<b>Upton Pyne PC</b>	Jacqui Ward- <a href="mailto:jacquiward30@yahoo.co.uk">jacquiward30@yahoo.co.uk</a>	<b>01392 851918</b>
<b>Young Farmers</b>	Will Ayre (Chairman) <a href="mailto:willayre@hotmail.co.uk">willayre@hotmail.co.uk</a>	<b>7964286831</b>
<b>Archery</b>	Alison Couling	<b>01392 841282</b>
<b>Gardening Club</b>	Jane Timlett	<b>01392 851361</b>
<b>Honky Tonks Line Dancing</b>	Paula Benford	<b>01392 210830</b>
<b>History Group</b>	Jean Wilkins	<b>01392 851337</b>
<b>Table Tennis</b>	Roger Wilkins	<b>01392 851337</b>
<b>Friends of the Arboretum</b>	Roger Wilkins	<b>01392 851337</b>
<b>Crediton Citizen's Advice</b>	Adviceline (10.30 - 3.30)	<b>03444 111444</b>

The **NEWTON WONDER** is delivered within the Parish at a charge of only **£7.00** per year.

Please contact Gerry Radford on 01392 851504 or email  
[paul.radford3@btinternet.com](mailto:paul.radford3@btinternet.com).

If you move away it can be posted for an additional £7.50 p.a.

To pay online/by BACS please ensure that payment is made to  
"Newton Wonder Community Magazine"

Sort Code: 30-93-14                      Account Number: 05351394

Please add your distributor's name as reference

The **Newton Wonder** team consists of Peter Hawksley and Peter Cordingley (editors). Mark Phillips, Sue Phillips, Richard Nicholls and Gerry Radford.

**Articles for Publication:** Please email to Peter Hawksley, editor@newtonwonder.net. Tel: 01392 851269

**Notices of Local Events:** Please email to Peter Hawksley as above.

**Local voluntary Village events are included free of charge.**

**Advertisements:** Please contact Richard Nicholls at richnick@outlook.com. Tel: 01392 851877. Please include your business name, address, ad-size required and number of insertions. **Payment in advance:** cheques made payable to **Newton Wonder Community Magazine** and sent to Richard Nicholls, Landown, Sand Down Lane, Newton St Cyres, EX5 5DE.

**All items for publication must arrive by the 15th of the month before publication.** Please send by email wherever possible otherwise they should be sent to the Editor at Station Cottage, Newton St Cyres EX5 5AS

We aim to distribute the **Newton Wonder** at the beginning of the month but this cannot be guaranteed. It is recommended, therefore, that events taking place early in the month be advertised the previous month.

The **Newton Wonder** is delivered to local households and businesses at an annual charge of £7. Additional copies can be purchased from the Post Office/ Village Store.

### Advertising Rates for the Newton Wonder

	1 Year	Colour
Small (approx. 73mm x 46mm)	£30.00	£40.00
Quarter Page	£60.00	£70.00
Half Page	£100.00	£120.00
Full Page	£200.00	£200.00

The editorial team of the **Newton Wonder** does not necessarily agree with the views of contributors contained in their published articles. This is a **community magazine** and it is our policy to print reports, articles and submissions that might be of interest to the community - provided that we have sufficient space to do so and they are not libellous in content.

Printed by Community Magazine Printing, Northmoor, Whitstone, Holsworthy, EX22 6TD.

Tel:-01288 341617 or 07784 008471.

Email:- printroom@communitymagazineprinting.co.uk

# SEASONED LOGS

From sustainable  
woodland management

Suitable for

**OPEN FIRES - WOODBURNERS**

**CHIMENEAS - FIREPITS**

Typical moisture content range 10-25%

Can be tested on delivery.

Supplied loose tipped or in a ventilated bulk bag.

## PRICES

**FULL LOAD** loose tipped **£150** approx 2.5m<sup>3</sup>

**HALF LOAD** loose tipped **£85** approx 1.25m<sup>3</sup>

**VENTILATED BULK BAG £50** approx 0.625m<sup>3</sup>

**KINDLING £3** per net when ordered with logs

All prices include vat @ 5%

Bulk bags can be wheeled into your shed/garage etc.  
thereby avoiding the need to stack them.

Minimum access width (for pallet truck) 1.5m/5ft.

**Martin Newbery Tel: 07967 219559**



# Belluno

Italian Restaurant, Bar & Grill

Authentic Italian  
Food freshly  
prepared and  
cooked in our  
kitchen

\*

All food sourced  
locally

\*

Two Course  
Lunch  
Monday to  
Friday - £14.95

\*

Open from 12  
noon to 10 pm

\*

Tel: 01392 851811

Takeaway and delivery available  
Please ring for details



Beautiful kitchens, *beautifully made.*



ASHGROVE  
KITCHENS LIMITED

Call 01363 773533 • [www.ashgrovekitchens.co.uk](http://www.ashgrovekitchens.co.uk)

