

# NEWTON WONDER

The Magazine and Website for the Community of Newton St Cyres



Picture by Margaret Tucker

Enjoying coffee at the Church Coffee Morning  
in the Parish Hall on 11th Sept.

See page 36 to read about the people who  
make the Hall work for us.

50p

October 2021

[www.newtonwonder.net](http://www.newtonwonder.net)

# QUICKES'S

EST. 1540

MAKE THIS AUTUMN TRULY DELICIOUS



Step inside the Cheese Box to discover a mouthwatering selection of cheese and accompaniments. From the finest seasonal cheeses, charcuterie and crackers to beers, ciders and wines we have your autumn feasting covered. Also available are our popular Three Cheese pizza boxes containing everything you need to conjure up a simple yet delicious supper.

## CHEESE COUNTER

Alongside our own cheese, we also stock other cheeses in our counter including Bries, Blues and Soft Goats cheese.

## OPENING TIMES

Monday – Friday 10am – 4pm

.....

Ask for a loyalty card when making a purchase and have a wedge on us with your 6th purchase. T&C's apply.

Home Farm, Newton St Cyres, Exeter, Devon, EX5 5AY  
[www.quickes.co.uk](http://www.quickes.co.uk) • 01392 851000

# The School Run

With the Olympics now a fading memory, the next exciting event on the athletics calendar is the great Beer Engine relay run on Saturday 9<sup>th</sup> October. That's when teams of enthusiasts will do two miles along the road from the pub and back to raise funds for FANS, the primary school's PTA.

The Beer Engine loop, as it's called, will take teams up Lake Lane, past the golf club entrance, next right and back to the Beer Engine. Team members will be allocated randomly by the organisers and distributed evenly based on their speed.

Each runner will run the loop individually and pass the baton to the next team member, who will also run the full loop.

Fun run or race? The organisers say it's bit of both, but the important thing is that there will be lots of fun for a good cause. If you fancy a flutter, there will also be a chance to wager on the fastest male/female/team.

Donations will be happily received at [https://www.justgiving.com/crowdfunding/fans-relay-race?utm\\_term=KeAvb932x](https://www.justgiving.com/crowdfunding/fans-relay-race?utm_term=KeAvb932x). Anybody wanting to help the organisers or find out more can contact them at [fans@exevalleyfederation.org.uk](mailto:fans@exevalleyfederation.org.uk)

Runners will be toeing up to the starting line at 11am.

## CHANGE IN POST OFFICE TIMES

From 4 November the Post Office at the Parish Hall will be open:

Tuesdays 9 - 11 am - as at present

Thursdays 12 noon to 1.30 pm - instead of the present rather later time of 12.30 to 2.30.

*Many thanks for your support for this important village facility*

## Anybody finding a bee swarm and would like it collecting by a bee keeper

Please contact 07971704793 or 01392851998

Chris the bee Man

Orchard View

West Town Road

Newton St Cyres

## PARISH COUNCIL REPORT September 2021

The meeting, held on 2<sup>nd</sup> September in the Parish Hall, was attended by nine Councillors, the Parish Clerk, the Mid Devon District Councillor Graeme Barnell, County Councillor Margaret Squires, Climate Change Officer Sue Rowell and three members of the public.

### Road Traffic Issues

- First some good news! At long last the pavement alongside the A377 at School Hill has been properly cleared. Secondly, the sunken manhole cover near Newton House has been repaired. It took many months of continuous nagging by the Parish Clerk and Councillors at all levels to achieve both these.
- Sadly, the pedestrian crossing in the centre of the village, scheduled to be installed in August, never materialised due to administrative issues. This installation is now re-scheduled for autumn half term or early November.
- Complaints about the levels of traffic through Langford are being passed to Devon County Council.
- Devon Highways is planning a Zoom meeting for Councillors at the Parish and District level to assess our concerns about the local roads. We will certainly attend and make our presence felt. All our other traffic issues were raised with Margaret Squires, but they remain pending.

### Climate Change and the Environment

- Possible dates for the training of Councillors in their Climate Change duties and the possibilities in regard to ameliorating Climate Change were given.
- The possibility of installing electric car charging points in the village is being investigated. Funding may be available through Mid Devon District Council or Innovate UK.
- The green spaces managed by the Parish Council are being evaluated to see how biodiversity can be increased.

### Planning

- Applications for permission to adapt or replace agricultural buildings at Bidwell Barton Farm and Barn Hill Farm were discussed. Although there were concerns about the developments at both sites, these will need to be examined by

Mid Devon District Council rather than at the Parish Council level. It was therefore decided to pass 'no comment' on these applications.

- Applications to install photovoltaic panels on the roof of East Holme Farm and to roof over an existing silage clamp at Five Elms Lane were not seen as causing a problem and also received 'no comment'.
- An application has been received for the development of the old school site. This has provoked much comment on the planning website, mostly focusing on the environmental impact of the development. Our Climate Change Officer has made a detailed evaluation of the application, and Parish Councillors thought this was a useful document. It will be forwarded to Mid Devon District Council. Graeme Barnell encouraged us to make sure that the environmental and social commitments made by the developer were clear and unambiguous, as it was all too easy for them to be ignored at a later date.
- An appeal made against the refusal to grant permission to change the use of some of the agricultural buildings at Winscott Barton Farm was upheld.
- Councillor Graeme Barnell encouraged the Parish Council to become actively involved in developing a neighbourhood plan for Newton St Cyres and to take part in any consultation with Mid Devon for their long-term vision for the area. He is still very concerned that although the Greater Exeter Strategic Plan failed, a similar proposal will be put through in the next few years with serious implications for Newton St Cyres and other similar-sized villages near Exeter.
- The Parish Council is still actively trying to develop a limited number of affordable homes within the parish. We have made links with a Housing Association and are currently looking to see if there are any suitable sites available. This is at a very early stage. Should a site be identified, then the whole parish will be consulted before any decision is made.

#### Other Council Business

- The Parish Hall car park is to be evaluated to see if re-sealing the surface would usefully prolong the lifetime of the current surface.
- A quote for the removal of asbestos in a shed at the allotments

was accepted. The hedges will also be cut, and some self-seeded elm trees taken down. Several more plots have been let.

- The wording for a new sign for the permissive school hill footpath was agreed.
- The bench on School Hill is broken beyond repair. A bench at this site may no longer be necessary as more people will be using the permissive path. The council decided to see if there was still a need for it.

The next meeting of the Parish Council will be held in the Parish Hall on Thursday 7<sup>th</sup> October 2021 at 7pm. Members of the public are welcome. However, COVID guidelines mean that the number of attendees will be limited. Alternatively, if members of the public wish issues to be raised in council meetings, they can contact councillors in the usual way.

Liz Ouldrige  
Press Officer

**ADRIAN PAYNE CHIMNEY SWEEP**

Your local sweep (Efford)

HETAS APPROVED

NACS REGISTERED

CERTIFICATES ISSUED

Telephone **01392 851199**

[www.adrianpaynechimneysweep.com](http://www.adrianpaynechimneysweep.com)



**A. White & Sons**  
**Funeral Directors**

Albert Road, Crediton,  
Devon EX17 2BZ

**(01363) 772043**

*Members of the N.A.F.D. and S.A.I.F*  
*Prepayment Plans Available*



**LEWIS'S**

PARTNERS IN EUROPE'S BIGGEST  
INDEPENDENT ELECTRICAL  
BUYING GROUP

**EURONICS**

*Showrooms & Registered Office:*

HAWKINS WAY, LORDS MEADOW  
CREDITON, DEVON EX17 1HY

**Telephone: (01363) 773246**

Mon - Fri 8.30-5.30  
Sat 8.30-4.00



**CENTRAL HEATING  
and DOMESTIC PLUMBING**

**N.A.GUPPY Ltd**

General plumbing and small-bore heating  
(gas, oil or solid fuel).  
Large or small contracts.  
Inquiries invited. Estimates free.  
Specialists in lead work.

Please contact : **Mr N Guppy**  
Croyland, Brampford Speke, Exeter

**Tel : 01392 841 336**

# Thoughts for October from Peter Cordingley

When was the last time you saw a doctor to discuss your health? A month ago? Two months? Longer? As far back as the beginning of the pandemic? If so, you're not alone.

Here's my experience (not, I should emphasise, with either of the Crediton clinics) if I want a face-to-face appointment with my doctor. First, I am encouraged to go to the GP's practice and hand in a note to the receptionist, setting out my problem. Phone calls to the clinic explaining my problem are not permitted, nor are emails or text messages. My note will then be handed to the doctor (not always right away, because the doctors are not there every day), and he will then phone me.

If the doc feels, on the basis of our phone discussion, that a face-to-face consultation is "clinically necessary" (official pandemic wording), an appointment will be arranged through the receptionist. But the elapsed time between handing over that first note to the receptionist and sitting down with the doctor can be weeks. Weeks! Lots can happen in that time, some of it not good.

I don't know how many other GP practices in these parts adopt the same procedure as mine, but national figures suggest that in-person appointments have become vanishingly rare in some areas over the past 18 months.

The number of face-to-face medical appointments in England is way down since the pandemic began, with 1.5 million fewer each week. They have been replaced by telephone discussions, which have tripled in number from about 850,000 per week pre-pandemic to about 2.3 million a week now.

Given the damage that the lockdown has had on accessing healthcare, it seems to me that getting GP surgeries back up and running as soon as possible should now be paramount, especially as vaccines are making a difference. But that doesn't seem to be the case, does it? Is it unfair to suggest that some GPs may be relieved that they don't have to face a surgery full of moaning, coughing patients every day? Has the new normal maybe shown them a different way of working? But the trouble with that is that medicine isn't like a job in the city, is it? It's a serious business with potentially serious consequences.

We all know who will suffer from this. It will be the old, the poor, the mentally ill, the disenfranchised, and the non-computer savvy. They don't launch Twitter campaigns or take legal action or write letters of complaint. They just sit at home wondering if that strange pain in the chest that's been there every time they walk up the stairs is anything to worry about, or if the lump that's appeared in their armpit is anything more than a swollen gland.

This is not an attack on GPs. Far from it. With good reason, they are still broadly admired and respected. Mine is. But successive governments have stripped the health services of funds, robbing it of not just doctors, but nurses, technicians, and others – just as the same governments have failed the UK's poor, underprivileged and marginal.

Going virtual and trusting to long-distance consultations may seem like an astute way out of this mess. But it's not. The longer it goes on, and the greater the distance grows between doctor and patient, the higher the risk of loss of faith in the NHS. And who knows where that may lead?

# NEWTON RAMBLERS

Sunday 10th October

The walk this month is a local one taken from the Newton St Cyres Country Walks leaflet.

This is a walk of about 5 miles, following the River Creedy towards Langford and Bidwell, returning to Newton St Cyres through Winscott and Sweetham. It is a gentle flat walk passing mainly through farmland with good views.

We will meet at the Newton St Cyres Recreation Ground at 10.00 a.m.

All welcome. Any queries to Nigel or Rosemary Chambers on 01392 851400.

*Please note that anyone joining us on these walks obviously does so at their own risk.*



## Professionally Qualified Tree Surgeons

With relevant qualifications  
& insurance to complete a wide  
range of services, including:

- ◆ Dismantling, felling & removal
- ◆ Crown reductions
- ◆ Crown lifts & pruning
- ◆ Ongoing tree maintenance
- ◆ Veteran tree care
- ◆ Hedge cutting
- ◆ Woodland management
- ◆ Tree surveys arranged
- ◆ Working locally  
in the Crediton area



WE ALSO  
SUPPLY  
WOODCHIP  
& LOGS

Bruce Kerry

Mobile: 07779 995720

[brucewtw@gmail.com](mailto:brucewtw@gmail.com)

All work completed to British Standards BS3998.

[www.westerntreeworks.co.uk](http://www.westerntreeworks.co.uk)



# RECREATION GROUND CLUB

At last we have a diary that is beginning to look like it should.

The ladies' darts have started their season, but with fewer teams, meaning a shorter season and for us we will only have one team this time. The men's darts league has had two meetings and are holding a finals night on 1st October to complete last year's games. We are waiting to get the new season's dates.

The skittles league are really struggling to get anything confirmed, but hope to be in a position to do something before December.

The football leagues are now well underway, with both youth and senior teams playing regularly, meaning youth football on Saturday mornings and senior football in the afternoons.

The tennis club continue with their friendlies and cups, playing all through the week. The archery group have now moved to their indoor venue and the cricket teams complete their programme on 12th September.

After six years, Dave Phare will retire from working the grounds and will stop at the end of October. His good work has left the grounds looking good. We wish him well and hope he enjoys the extra free time.

We were disappointed that our motor bikes friends had to call off their day at the Rec, but they are sure they will be able to arrange something next year.

We hope to start the month with a meeting on Sunday 3rd October. Things have kept ticking over, with members and clubs making sure they managed to fulfil their diary bookings but now we find there are points that need clarification and a return to as close to normal as we can get.

Wendy Lewis

# Newton St Cyres Tennis Club

September has been a busy month at the club with the start of league matches, the club Autumn Challenge, Junior Coaching on Wednesday evenings with coach Jon Wills, and normal club sessions. We play outside all year round.

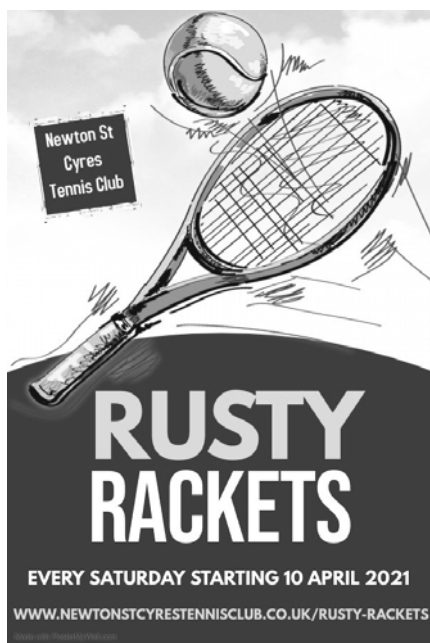
If you have been inspired by Emma Raducanu's US Open performances, why don't you think about joining us?

You can try a couple of club sessions before making a decision, and Jon Wills is available for adult coaching too. See our website [www.newtonstcyres.co.uk](http://www.newtonstcyres.co.uk) for all information, or contact our Membership Secretary Laura Leigh for further details on 01647 24259



Sally Baldwin

## Fancy playing tennis again after a break?



Not sure if you are good enough to join a club?

Come to a Rusty Rackets session at Newton St Cyres Tennis Club.

Saturdays 9-10am from 10<sup>th</sup> April, (10 am-12pm if more time wanted).

Coach Jon Wills will facilitate play and advise you on your game.

Maximum 6 people per session, £8 for one hour.

Please contact Jon on:

[jrw23@hotmail.com](mailto:jrw23@hotmail.com),

tel. 07555 595747

Or Laura Leigh on:

[winstodehouse@gmail.com](mailto:winstodehouse@gmail.com),

tel. 01647 24259

# CELEBRATING?

**CHRISTENING**

**BIRTHDAY**

**ENGAGEMENT**

**WEDDING RECEPTION**

**WEDDING ANNIVERSARY**

**Why not consider the Parish Hall for your venue?**

**It's local, not expensive, has its own car park, two rooms and a new kitchen**

**Also has wi-fi and suitable for club and business meetings**

**For further details, please contact Mary Long :-**

**Tel:- 01392 851624**

**E-mail:- [maryglong@btinternet.com](mailto:maryglong@btinternet.com)**



## Credition

A Sure Start Children's Centre



Do you have a child under the age of 5?

Or are you expecting your first baby?

Become a member of  
Credition Area Children's Centre

We offer free play and development  
sessions for children

With support and information  
for local families

Contact us by ....  
Telephone: 01363 777219 or 776903

Email: [credition@actionforchildren.org.uk](mailto:credition@actionforchildren.org.uk)

Facebook: search for  
Mid Devon Children's Centres

<http://www.actionforchildren.org.uk/credition-childrens-centre>

[www.newtonwonder.net](http://www.newtonwonder.net)



**Jonathan Wood  
Veterinary Surgeon Ltd.**

**01363 772319**

[www.jwoodvet.co.uk](http://www.jwoodvet.co.uk)

**24hr Emergency Service.**

As an RCVS accredited practice, we provide a friendly, caring, professional service for companion animals, equine and farm patients.

We offer hydrotherapy and rehabilitation, modern ultrasound equipment, in house laboratory service, a mobile clinic and much more. For full details visit our website.

We are proud to be accredited by the international cat care organisation as silver level cat friendly clinic.



Est 1831  
**TUCKERS**  
**COUNTRY STORES**

Seedsman • Agricultural Merchants • Maltsters

**Commercial Road, Lord's Meadow**  
**CREDITON, EX17 1ER (01363) 772202**  
also at Ashburton  
[www.edwintucker.com](http://www.edwintucker.com)  
[crediton@edwintucker.com](mailto:crediton@edwintucker.com)

- Huge Selection of Pet Food
- Pet Beds, Toys & Other Accessories
- Composts & Fertilisers
- Plants & Shrubs
- Vegetable & Flower Seeds
- Horse Feed & Supplements
- Saddlery & Tack
- Clothing for Horse & Rider
- Leisure & Work Wear
- Fencing & Gates
- Homebrew
- Cards & Garden Gift Voucher
- Tools & Hardware
- Coal & Bottled Gas

**PET  
EQUINE  
GARDEN  
AND  
FARM SUPPLIES**

**OPEN 6 DAYS  
A WEEK  
MON - SAT  
8.30am - 5pm**

.....and much much more

# THE BEER ENGINE

**BREWERY PUB • NEWTON ST CYRES EX5 5AX**

## OCTOBER 2021 PUB & KITCHEN OPENING HOURS

	Bars	Kitchen
<b>Mon.</b>	closed	closed
<b>Tues:</b>	16.00 - 2100	closed
<b>Wed:</b>	16.00 - 22.00	17.00 - 20.30 (Bar Menu)
<b>Thurs, Fri,Sat,</b>	12.00 - 23.00	Lunch: 12.00 - 15.00 Evening: 17.00 - 21.00
<b>Sun,</b>	12.00 - 18.00	closed

FOR MENUS AND FURTHER INFORMATION PLEASE  
CHECK OUR WEBSITE





**Sustainable  
CREDITON**

[www.sustainablecrediton.org.uk](http://www.sustainablecrediton.org.uk)

## Dutch Apple Pie

When you next make an apple pie try this version:

shortcrust pastry

1 lb apples

1 tsp cornflour

brown sugar to taste

sultanas to taste

lemon zest

a pinch of cinnamon.

Line an ovenproof dish with shortcrust pastry.

Fill with sliced cooking apples mixed with the rest of the ingredients.

Cover with a pastry lid. Make a couple of slits to allow any steam to escape and sprinkle with sugar.

Bake in a hot oven until golden brown. Good with a dollop of Devon clotted cream.

Paul Cleave

### Newton St Cyres toddler group

Come along and join us every Wednesday in term time, lots of great toys to play with. Stories to enjoy, craft session and activities to try.

It is great family fun.

Our family sessions are £2 a time and run from 9:30-11:30am. The price includes a drink and a snack.

We would love you to join us at Newton St Cyres Primary School



**Contact:**

**Anna Bonnett**

**07930403375**

**[newtonnappies@outlook.com](mailto:newtonnappies@outlook.com)**

or see our facebook page

**Newton Nappies**

## F. J. Stevens & Son Memorials

**Crediton & Barnstaple**  
01363 776816      01271 861624



Simon's Mobile: 07850128413

Sam's Mobile: 07969613577

Email: [stevenscrediton@yahoo.co.uk](mailto:stevenscrediton@yahoo.co.uk)  
[www.fjsmemorialsandheadstones.co.uk](http://www.fjsmemorialsandheadstones.co.uk)

Albert Road, Crediton, EX17 2BZ  
Unit 2 Estuary Business Park, West Yelland, Barnstaple, EX31 3EZ



**Elite Blinds**  
& Tracks Ltd.

Manufacturers and Suppliers of all types of  
Quality Blinds & Window Dressings  
VERTICAL ROLLER VENETIAN WOODEN ROMAN  
CONSERVATORY CURTAINS TRACKS & POLES

**Free Estimates** Competitive prices

**Tel: 01392 860141**

email: [eliteblindsdevon@btconnect.com](mailto:eliteblindsdevon@btconnect.com)

Visit us at: [www.eliteblindsandtracks.co.uk](http://www.eliteblindsandtracks.co.uk)



We are an independent, caring, family run practice  
providing the highest standard of medical  
and surgical care with multiple specialists  
in house. Well equipped branches and  
state of the art hospital.

We provide our own 24hr Emergency service.  
Surgeries available seven days a week.



**[www.cityvets.co.uk](http://www.cityvets.co.uk)**

Four Branches across the City of Exeter  
Heavitree 01392 250066 Alphington 01392 493999  
St Thomas 01392 250000 Whipton 01392 465553



**Adrian Andrews**

**home & garden maintenance**

fencing

turfing

garden sheds and raised beds

grass & hedge cutting/laying

paths, patios and walls

pressure washing

house exterior maintenance

for a FREE / No Obligation Quote

t. 01392 860766

m. 07743 969647



## How much would you like to know about the past in Newton St Cyres?

Newton St Cyres History Group has an ever-growing library of publications. What better way to orientate and acquaint yourself with your local surroundings!

### • **Newton St Cyres – A Village Story (£5)**

Compiled by residents of this village in 1999 (the green 'millennium book') containing a wealth of reproduced photographs.

### • **Newton St Cyres Historical Village Walks (£1)**

Four brief walks around the Village, the Western Bluff, West Town and Station Road with maps and an explanation of the road cuttings, levelling and straightening.

### • **Newton St Cyres Mining and Miners (£1)**

Our mining heritage, both manganese, claimed to be "*the first commercially successful manganese mines in the world!*", and lead & silver up on Tin Pit Hill that may go back to Roman times.

### • **Newton St Cyres Church – Statement of Significance (£2)**

Describes the history and most important features of the church, dedicated to St Cyr and St Julitta.

### • **Memories of Boyhood in a Devon Village (£3)**

Written by Alfred Abraham, born in Newton St Cyres in 1893. He shares his memories growing up in the village at the beginning of the 20<sup>th</sup> century.

### • **Newton St Cyres in the 1940s & 1950s (£5)**

Written by Stella Cork, born in Newton St Cyres in 1934 and the daughter of the village postmaster. She gives a remarkable description of families in the village and an insight into village life.

### • **Newton St Cyres and The Civil War 1642-46 (£5)**

The story of grief, hardship and a little excitement for those living in the village almost 400 years ago during the English Civil War supported by coloured photos and maps.

Would you have been a Roundhead or a Cavalier?

Also visit [newtonwonder.net](http://newtonwonder.net) where you will find data and analyses on:

- Births, Deaths and Marriages in Newton St Cyres (16<sup>th</sup>–18<sup>th</sup> century)
- UK Censuses on Newton St Cyres (1841-1911)
- Newton St Cyres Tithe Map of 1843

**Copies can be purchased by contacting**

**Jean Wilkins (01392 851337), [jeanwilkins1@btinternet.com](mailto:jeanwilkins1@btinternet.com)**

# Do You Remember...October?

## October 1971

A quarter peal of grandsire triples, 1260 changes, was rung by the Newton St Cyres band of ringers and visitors from Exeter.

The Parish Hall committee reported success with the Fete with a profit of £121.87p. Preparations are in hand for a repeat show next year. Sixteen trestle tables have been bought and are now in use, replacing a rather worn out mixture of tables, having done their duty for many years.

Wild rumours that the vicar has joined the Hells Angels, as he has been seen on a motorcycle, are unfounded. The machine does in fact belong to his daughter, who kindly allows him to borrow it.

The matter of dangerously sited bus stops in the village was raised with Devon Road Safety.

## October 1981

A plea has gone out for drivers to deliver 'Meals on Wheels'. This involves driving two days a week for less than two hours with expenses paid by Devon County.

The NSC Art Group was treated to a talk by Mr Andrew Wood, who showed how his work developed from school through art college to his professional status as an artist now resident in Lyme Regis.

The football club as well as running two Saturday teams is now running a Sunday league side which helps to maintain a busy schedule through the season.

## October 1991

Liz Mitchell's "In the Garden" article reminds us of the little saffron crocus. At one time it was the apothecary's stand by for many ailments including jaundice and depression.

Scrabble is back and new members are welcome.



The Afternoon Club has had an outing to Newquay, taking in a coffee stop at Jamaica Inn.

The Twinning Circle had an outing on the canal to the Turf Locks Hotel, Mr John Durrant gave a talk on the history of the canal and places of interest along the way.

## **October 2001**

In aid of the National Garden Scheme Sherwood gardens have now reopened on Sundays between 2 and 5pm.

The meeting of the Newton St Cyres parochial church council responded to a consultation by the Diocesan Advisory Committee regarding the churchyard. Also, various measures were proposed to streamline the church accounts.

## **October 2011**

The Parish Council is seeking applications for grants from charitable and non profit making organisations within the parish. The council also recorded a lot of work done by the footpath warden, Cllr Steve Parker.

Last month saw a small crowd gathered at the train station to see a steam train pass through. Loco number 70000 hauled carriages to Okehampton.

Plans are now underway for the 2012 Revels, local clubs and organisations are requested to put their plans to the committee.

The Gardening Club produce show went off very well with 68 classes bringing in almost 200 entries. Our local MP, Mel Stride, was present and was taking time talking to the organisers and exhibitors.

### **Volunteer Wanted:**

The Newton Wonder needs help with putting together the very popular "Do You Remember.....? page.If you would like to help with this tak which generally does not take up too much time please contact the editor on 01392 851269 or [editor@newtonwonder.net](mailto:editor@newtonwonder.net).

# Addendum

In last month's article about the heroes of the Rec Club there is brief mention of the way in which the club is funded. John Quicke, the club treasurer felt that some major contributors had been omitted. To set the record straight he sent the following:-

## Addition to the article on Newton St Cyres Recreation Ground in the August Newton Wonder.

The following have very generously contributed financially to the Newton St Cyres Recreation Ground over the years:

Newton St Cyres Parish Council: generously donate money each year to the Recreation Ground as a contribution to our rent, and also for general costs and specific costs as the need arises. The Parish Council also helped with the funding of the refurbishment of the play area a few years ago. The Parish Council also paid for the defibrillator at the Ground. I am sure other contributions have been made over the years as well. Very much appreciated.

Bingo: this has contributed a large amount of money to the Recreation Ground over the years and Joyce Rook has been responsible for this. Many thanks.

Newton Wonder: generously contributed to the refurbishment of the play area a few years ago.

Sheila Ward Legacy: Sheila Ward left a substantial sum to the Recreation Ground in her will when she died a few years ago.

If there are any other financial contributors which I have forgotten to mention please forgive me.

John Quicke

Treasurer

Newton St Cyres Recreation Ground

## U3A: The Life of a Filmmaker

For U3A's September gathering, Martin Palethorpe, a TV producer, director, cameraman and editor, gave us an excellent talk on the making of wildlife and nature films. We heard that several years of planning go into making each film, but finally Martin and his colleagues will be on a plane for a distant location. He estimates that over his 35 years of filmmaking, he has travelled more than half a million miles.

Getting to remote locations is challenging. They often have to land on small airstrips and ferry kit by helicopter or on the backs of local porters to a base camp. Here, living conditions are very simple, usually tents. The filming equipment gets better accommodation than the humans as it must be kept dry at all costs. The crew and presenters might then need to walk for several hours from the camp, carrying everything they need to film.

Martin described the time they measured the height of a waterfall in Guyana by getting the presenter to abseil down it. The film clip showed the 200m descent, and a very scared presenter. However, Martin reminded us that whatever the presenter does, so does the cameraman – but he also has to do it backwards and filming as he goes.

Film crews have to be sensitive to the local culture and the environment. In Guyana, they couldn't film on Saturdays, because of local religious traditions. In the Himalayas, all human waste must be brought back down the mountain. Just don't ask!

Finally, Martin paid tribute to the local people who made filming possible. He had considerable praise for the Sherpas in the Himalayas. Without them, no one would make to the top of Everest.

Another great talk! Thanks Martin.

Liz Ouldrige



THE UNIVERSITY OF THE THIRD AGE

## Upcoming monthly meetings

*October 20th with Stephen Powles*

"In pursuit of the improbable" wild life stories.

*November 17 with Lydia Corbet*

"The life of Picasso's Muse"

# October on the Farm



## NATURE

Walking by the river, we saw a heron, standing like some ancient creature. We'd already seen one kingfisher, a flash of brilliant blue out of the corner of our eye, and then we saw another. Lush growth, summer's glory, lies tangled on hedgebank and riverside. It feels like loss, but it all returns to the soil with a rich and satisfying aroma, to rise anew next year.

## ARABLE

We hope for a golden autumn to allow us to get the crops in. For that we need the soil in good shape. Roots like space for water and air. That's provided by a happy soil's beautiful crumb structure, made by humus, gums secreted by plant roots, and minerals in the soil. We choose our days to get the autumn crops in, when we can handle the soil while keeping its structure. The roots that grow rebuild the structure, and the longer the roots are there, the better the structure. The best structure sits under the hedge, where wheels and feet and implements don't go. Our target as farmers is to keep our soils as close to that pristine state as we can while asking the soil to provide us with food.

Lots of our soils don't thrive producing crops and being disturbed every year, losing too much of that precious structure, and that is where grass comes in. Grass stays longer in a field, sometimes indefinitely. The roots richly inhabit the soil, creating a lovely structure. Grass doesn't provide us with food directly, it's too fibrous. That's where animals come in, able to digest that fibre in their fermenting vat of a rumen, producing meat and milk we can eat.

Even that continuous root growth can get compacted by wheels and feet, and we need the actions of worms and roots to restore it. That's why we take the cattle off the fields for the winter, so their hooves don't crush the soil more than the soil can restore itself. That's why, mostly, we've stopped out-wintering the cattle. They are happy enough. We've put up another roof to keep most of them inside. We've also grown some kale to allow us to keep some animals outside, teenagers who are a little lighter on their feet. That soil will then grow grass for a while to recover.

## COWS

First the youngest calves, and then progressively older ones, come in as the weather worsens and the soil becomes more tender. We bed the cattle on straw, topping the straw

up to keep them clean, and feed them from grass grown on the farm, and a little grain, <sup>October 2021</sup> much of it grown on this farm. The grain we grow isn't suitable for people, lacking the protein to make bread. We may also feed some by-products from human food, like the meal after crushing rapeseed for oil or the brown parts not needed in white flour. The animals eat all this, producing growth and milk and dung.

Their dung converts the unyielding straw into a perfect manure. It'll partly rot down in the bottom layers as the straw builds up. We'll take it all out in the spring, and spread to add to the organic matter in the soil, supporting the crumb structure of the soil. The rest we will compost further in a big heap, and will be spread on fields when they can use the nutrients. It's part of the grand cycle of animals and plants that keeps soils healthy.

We need to work out how to manage the animals' burps so we can contribute to global cooling, and we wait for the scientists to work that out. What we can do is produce milk with as low an impact as possible. British milk runs at about half global amounts of global warming gases for each litre, and ours about half that again, once we account for all the carbon dioxide we are putting away in our woods, hedges and soils, again working in a beautiful cycle.

## **DAIRY**

The milk is where the fun starts in the cheese dairy. We add our wonderful heritage starter cultures to vats of warm milk, to acidify the milk, and rennet to set it. We cut, scald, drain whey, mill and salt, until we are left with squeaky fresh curd, put into cloth-lined moulds, then onto the shelf to mature. The whey, once we've taken the last cream out of it for butter, goes to our lagoon with cow poo and washings from parlour and dairy, to wait for the best time to spread it to support the soil to grow the grass and crops again. Of course we can and will find better ways to do things, exploring how we can produce more delicious cheese with less impact on our environment.

It's a magical cycle, with glorious things to eat at the end of it.

## **RECIPE**

For Halloween, I'm enjoying our Double Devonshire. It's younger, a gentle orange colour from annatto seeds, with a subtle creamy gentle sharp and nutty flavour. It pairs beautifully with some tasty little chestnut-flavoured potimarron squashes I've grown.

I like this pancake mix baked with it. Thinly slice one squash (a butternut squash will do) with a small onion. Whisk up 3 eggs, 40mls olive oil, 30mls milk, 50mls double cream, a sprig of chopped rosemary and clove of garlic. Add 120g self-raising flour and 100g grated Double Devonshire to squash and onions, and mix to combine. Pour the liquids in and mix well. Season.

Put in an oven-proof dish and bake in a preheated oven for 30 minutes at 175C till cooked through and golden brown on top.

Mary Quicke

# Memories of Brian Please

All who had the privilege of knowing Brian Please will appreciate and value the warmth of his friendship and generosity. Although he lived here for only six years, he leaves a legacy of extraordinary achievements.

Brian never did things in a half-hearted way, which resulted in him taking lead roles in the History Group and involvement in the running of our village church. In the case of the latter, we spent many hours working together on a proposal to improve and modernise the church facilities. I would love to think this can still be achieved in recognition and remembrance of Brian's commitment.

Aside from this major project, over these last few years he also produced illustrated church guides for all the churches in the Netherexe Community Benefice.

We will all have our own fond memories of this very special person, which we must indeed treasure. For my part, I deeply valued Brian's friendship and knew that he was someone I could confide in and share life's problems with, knowing they would go no further.

From a Christian perspective, there is sadly no simple explanation as to why such a lovely man should have been taken so young. We have to accept that although he is no longer with us, we do have our memories, which we must always cherish.

May Brian now rest in peace.

Rev. Tony Lane

## From the Parochial Church Council

It was with shock and enormous sadness that we learned of the sudden and untimely death of Brian. In the relatively short time he lived in Newton, he had a huge impact. Fascinated by its history, he was soon exploring the local woods and archives to discover more about the manganese mining, one of Britain's main sources of the mineral and extremely important in its day. A book followed, 'Mines and Miners of Newton St Cyres'.

Brian was very generous to the church with his time: treasurer, fabric officer, vice-chair and a strong voice in the choir. Under his guidance, the church leaflets also had a makeover. He replaced the rather dull and ageing 'bats' with a colourful leaflet that cleverly opened out to lead the visitor around the church's historical landmarks. So popular was this idea that all the churches in the Benefice asked for them. In his generously creative way, Brian worked out leaflets for them all.

His charm, energy and enthusiasm will be much missed.

Pita Birt,  
NSC Parochial Church Council  
[www.newtonwonder.net](http://www.newtonwonder.net)



## BRIAN PLEASE - A TRIBUTE

### from the History Group

It was with great sadness and a sense of disbelief that the History Group heard of the sudden death of Brian Please on Thursday 26<sup>th</sup> August. Only about a month earlier he had led the Group during an evening in the churchyard, where he gave his final talk before he was to leave for a new life nearer to his family.

Brian's first meeting on coming to the village in 2015 was held in the church when John Scott, the church architect, gave us a wonderful history of how the building had evolved. A year or two

later, always willing to help, Brian showed a U3A Church History Group around the building, when I was unable to do so. He said he learned a lot that day! From then, on he made it his business to become an expert in the history of the church fabric.

Brian was already an expert on mining history in the village. His own property was very close to the old manganese mines and he set about learning all he could about them with characteristic enthusiasm and speed. He had a gift for presentation, both written and verbal, and he has given his mining lecture to many learned societies, although always qualifying it by confessing his lack of geological knowledge.

He made a very full contribution to meetings of our Group and to the committee. Many will be familiar with the Group's history booklets. He was the driving force behind these and it was he who has enhanced our website on [newtonwonder.com](http://newtonwonder.com) with all the village births, marriages and deaths through the centuries and also the parish census returns.

Brian was very talented, generous, hospitable and, above all, a kind and modest man. We shall all miss him greatly.

We were sad he was leaving but it is a tragic loss for Moira and their family. Our thoughts and best wishes go with them at this time.

Jean Wilkins with the Group Committee

# October at Crediton Arts Centre

Crediton Arts Centre are back up and running and have a very busy October programme lined up. On Saturday 9th October renowned singer and musicologist Nicola Harrison brings her latest show 'The Becoming', an innovative musical and storytelling experience combining poetry, music, percussion and song with musical improvisation and interludes to represent the sea in all its guises, with shanty singing thrown in.



*The Becoming*



*Lewis Clark*

Pat Laver and Jenny Start are back with another popular quiz to raise money for Hospiscare on Friday 15th October. The next afternoon (16th October) sees Peter Hamilton revisiting the issue of climate change with his latest short play 'Dodie's Dream' with music, puppets and a cast of local artists and activists.

On Friday 22nd October we are hosting the Wiltshire-based musician and singer Lewis Clark, playing original songs from both his previous and most recent album 'River', displaying his love of rhythm and blues while exploring an eclectic range of influences, including traditional British folk, Latin, American-roots music and wider European traditions.





Half-term will see the return of the wonderful Puddleboat Theatre on Friday 29th October with their show about make-believe friends 'Margo and Mr Whatsit', an interactive make-believe tale where the real and imaginary collide, and friends are never far away.

Tickets for all of these shows are available from

[www.ticketsource.co.uk/creditonartscentre](http://www.ticketsource.co.uk/creditonartscentre)

As well as live events and films, the Arts Centre is home to many other activities, including a number of visual art classes for adults, Crediton Youth Theatre, Tot's Play, two book clubs and the Crediton Shakespeare Club.

# Sherwood House,

Newton St Cyres EX5 5BT 01392 851622

In these difficult times when we all need some space and calm, Nikki and Mark Chambers would like to invite you to come and walk around our beautiful garden of 25 acres.



EVERY WEDNESDAY ONLY - OPEN 10am to 1pm -  
Sturdy footwear required.

We can only accommodate 20 cars, so first come first served!

Please observe social distancing rules. At own risk

No charge.

No dogs.

October 2021



## Credition Independent Bed Company

27 High Street Credition EX17 3AH (Next to Costa) Email: [enquiries@creditionbeds.co.uk](mailto:enquiries@creditionbeds.co.uk)  
Website: [creditionbeds.co.uk](http://creditionbeds.co.uk) Tel: 01363 774156

### Special Offers

**Clearance Mattresses** starting from **Single £100 Double £140 Kingsize £180**

**EXTRA 20% DISCOUNT** when bought in quantities of 6 or more - Limited Offer

4'6 Pocket Master 1000 Divan Set  
**£379**

4'6 Double Amber Package Deal  
2 drawer divan set with matching headboard  
**£399**

4'6 Double Coral Package Deal  
2 drawer divan set with matching headboard  
**£529**

5' King Size Memory Pocket Package Deal  
2 drawer divan set with matching headboard  
**£649**

4'6 Merino  
Wool Mattress  
**£479**

5' Medicare 4000 Mattress with  
cooling blue memory foam  
**£679**

4'6 Double Ocean 1000 Pocket  
Sprung Mattress  
**£249**

4'6 Dartmoor Beds Handmade Kirtonian  
Firm Mattress with luxury layers of  
Dartmoor Wool  
**£799**

*- Fast Delivery - Expert Advice - Best Prices*

## AIR ROOFING SOLUTIONS

## RESIDENTIAL AND COMMERCIAL SPECIALIST ROOFING SERVICES THROUGHOUT THE SOUTH WEST

SPECIALISING IN

SLATING AND TILING

FLAT ROOFING SYSTEMS

LEAD WORK AND OTHER HARD METAL SYSTEMS

All roofing works completed - no job too big or too small

All of our work is fully guaranteed. Deposit protection insurance and insurance backed guarantees are available on all new and replacement roofs.

**Request a quote 01884 821514**

M: 07737 433869 E: [aiirroofing@gmail.com](mailto:aiirroofing@gmail.com)

AIIR ROOFING SOLUTIONS - DEVON

**[www.aiirroofing.co.uk](http://www.aiirroofing.co.uk)**





## How big is yours?

If you've grown a Sunflower bigger than this one in Chris Southcott's garden, please send us a picture

## How well do you know your village?

Can you answer the following questions:-

1. WHEN was the picture taken?
2. WHERE was it taken?
3. WHO is in the Picture?

No.60



For a closer look see our website:-  
[www.newtonwonder.net](http://www.newtonwonder.net)

On the Home Page you will find this picture and a link to all the quiz photos so far and an easy form to submit your answers.

## Friends of the Station



There is no competition this year because of the pandemic, but the garden has produced a very good show

Thank you to all the volunteers at the station garden. Tom and Daphne Clague are standing down as volunteers at the end of this season after many years. Their contribution will be missed.

.Chris Southcott





Visit our  
restaurant for  
breakfast, lunch,  
tea, coffee and  
homemade  
cakes!

# Beautiful gardens and homes start at Bernaville Nurseries.

Call 01392 851326  
[www.bernaville.co.uk](http://www.bernaville.co.uk)

FIND US ON THE A377 JUST OUTSIDE EXETER

Flexible - Personal - Exclusive  
We provide the space - you provide the magic!

[www.harefieldbarn.co.uk](http://www.harefieldbarn.co.uk)

# Something rustling in the Parish Hall

As part of getting back into community life following Covid and the lockdowns, the Parish Hall and Friends of the Arboretum were pleased to welcome back Paddleboat Theatre with their production of 'Rustle' on 21<sup>st</sup> August. This was arranged through Villages in Action.

Sadly, the weather sabotaged the original plan for the performance to take place in the Arboretum, but it worked extremely successfully in the hall, and was very well attended.

The theme of the play was that three young would-be adventurers had gone on a trip, which took them into the forest where they became lost. Soon their imaginations were running wild and, with the use of simple props, music, puppets and audience interaction, the tale is told of

- How would they cope?
- What would they find?
- What would they discover about each other?

Was there a monster out there, or was it just the leaves rustling in the wind?

The three very different characters all captured the imagination of the audience, so that you felt you knew them – or was it that they were they like someone you already knew?

- the monster-catching 'I'm not afraid' boy,
- the bossy, badge-collecting girl guide
- the reluctant adventurer girl, who didn't really want to be there but her parents had said it would be good for her!



It was a wonderful event where children and parents were enchanted by a story that they could share, and we look forward to Paddleboat returning in the future with another production

As always, with Paddleboat, the production was very energetic and engaging. The ensemble is well known for its creative storytelling, and 'Rustle' was no exception.

Nicola Baker  
Pictures by Geoff Jackson

# Newton St Cyres Gardening Club

It doesn't seem possible that I am already writing the article for October! This year has flown by and, even with the additional time that lockdowns provided for working in the garden, there still seems so much to do!

We attended the Gardeners' World Live event at the NEC in Birmingham. It was a great day. This year it was moved to August and adapted for Covid, with the majority of stands, etc. outdoors. We felt that it worked really well, and thoroughly enjoyed the talks and the professional displays, as well as the show gardens and the temptations of the nurseries selling their specialist plants.

One of the talks was by Adam Frost, who provided an insight into how he



became involved in gardening. Some of his earliest childhood memories were of being outside with his grandparents, helping on their allotment. He moved to North Devon when he was 15, and at 16 was looking for work. The options were joining the Army, becoming a chef or doing gardening work. Although he nearly joined the Army, he managed to get a job

with Devon Parks, and that led to his passion for gardening.

At the age of 21, he took a job with the great Geoff Hamilton at his Barnsdale Garden, and the rest, as they say, is history! Within his talk, he spoke about how we all want to achieve perfection in our gardens, but that the 'show gardens' are simply snapshots of a particular moment in time. Our aim should be to work towards many different 'moments' within our gardens, and these will change with the seasons and with our own individual passions.

I found that one of the most fascinating gardens was 'What Lies Beneath', designed by Prof. David Stevens, and which received a Gold Award. In addition to being a beautifully landscaped garden, it highlighted the details that are normally hidden. This was done by





underlying structures fully visible in an eye-level cross-section, including a raised glass fronted pond, a green living wall, a steel walkway and a paved driveway. It also showed the real cost of having a garden landscaped and the huge amount of work that is required.

Last month I said I would be writing about houseplants and their recently renewed popularity. It seems that wherever you go these days, garden centres, specialist houseplant shops, cafes and supermarkets all have houseplants for sale. This week, with the recent return to university, students have been seen heavily laden with houseplants! While some are considered easy to look after, others do need some specialist knowledge and care.

Having plants indoors not only brightens rooms, but studies have shown that they can improve our wellbeing by lowering stress levels and blood pressure. If you have them in work/study/office locations, they can also be beneficial to productivity and, by improving mood, they also increase concentration levels.



*Houseplants at Gardeners' World Live 2021*

The following plants are considered to be 'easy care'. This means that they will tolerate a wide range of positions and conditions within the home. They are also usually forgiving if you forget to water occasionally, or if they are not in an ideal location for light/temperature. It is best to water all houseplants with rainwater, and grouping them together helps to conserve moisture. Most will require a monthly feed with houseplant feed during the growing season, from spring to autumn.

**Sansevieria** Originally known as 'Mother in law's Tongue' because of the sword-like pointed leaves, but now re-named the 'Snake Plant', it will tolerate

some drought, is happy in sun or part shade, can grow in low humidity and requires well-drained soil. The only time you may have difficulty is if the plant experiences extreme cold or is over-watered. There are several varieties to choose from with differing leaf shapes and colouring. They include:

*Sansevieria trifasciata* 'Laurentii' is the most common type of snake plant, with grey-green leaves and a creamy-yellow border.

*Sansevieria cylindrica* (African spear) has smooth, cylindrical, upright leaves with grey-green variegation. It reaches around 70cm tall.

*Sansevieria trifasciata* 'Hahnii' (bird's nest snake plant) is a compact plant that reaches around 20cm tall. Its rosette of leaves are said to resemble a bird's nest.

*Dracaena marginata*, also known as the Dragon Tree, has elegant, thin leaves with red edges. The lower leaves gradually fall away to display a thin trunk. It prefers a bright or sunny spot, but will tolerate lower light levels. The leaves should be wiped occasionally to keep them dust free. *Dracaenas* rarely branch out, so cuttings of various heights are usually planted together for a bushier effect.

*Spathiphyllum wallisii*, also known as the Peace Lily, will tolerate bright light through to full shade. It will grow happily in an average room temperature, and is tolerant of lower humidity locations. These are ideal in office spaces, and have glossy bright green glossy leaves with occasional white flowers, called spathes. These flowers will usually appear in spring and summer, although they may also flower throughout the year. Old/dead flowers & leaves should be cut off and it will benefit from annual re-potting each spring.



*peace lily*

*Philodendron* Another plant with beautiful glossy leaves that can come in a range of colours and shapes. It prefers ericaceous compost, is tolerant of lower relative humidity, grows well in shade or brighter light and is happy in average room temperature. The Heart-Leaved *Philodendron* (*P. Scandens*) will give a cascading display, while the *P. Imperial Red* is a more upright display of larger pointed, paddle-shaped leaves



We recently bought the following for our home

*Calathea majestica* Whitestar A stunning plant that I fell in love with immediately. It has very elegant leaves with white and pink stripes that almost fill the leaf. It needs to be moist with a high humidity level. Daily misting, indirect light and watered only when the first inch of soil becomes dry are recommended.



*Calathea majestica* Whitestar (Left)  
& *Anthurium Clannervium* (Right)

*Calathea majestica* Whitestar L & *Anthurium clannervium* R *Anthurium clannervium*, also known as Giant laceleaf or Velvet Cardboard - with heart-shaped leaves, deep white veins and a velvety feel. These are happy in a bright corner of a bright room and should be watered weekly, keeping the soil damp but not moist. Misting is also helpful.

*Anthurium andraeanum* is widely available and commonly named the Flamingo Flower/Plant and needs regular watering with a fortnightly feed.

Finally, jobs in the garden during October include:

- Divide established rhubarb crowns to create new plants
- Cut back perennials that have died down
- Divide herbaceous perennials
- Move tender plants into the conservatory or greenhouse.
- Continue to deadhead dahlias
- Keep turning the compost heap, watching out for slow worms!

Enjoy your gardening, both indoors and out!

## Barton Place Farm Shop

Wrefords Lane, Exeter, Devon. EX4 5BS

A family-run farm shop, we support many local producers & suppliers, as well as selling our own beef, lamb and eggs.

We offer fresh vegetables, chilled and frozen goods, cupboard essentials, snacks, cakes, treats, Leafstreet gifts and takeaway options of hot food & coffee.

In 2020 we will start a joint venture to offer milk via a vending machine (available 24/7), with milk supplied by our neighbours.

Open 7 days a week  
9.00am to 6.00pm Monday - Saturday  
10.00am to 4.00pm Sunday



Tel: 01392 422720

[www.bartonplacefarm.co.uk](http://www.bartonplacefarm.co.uk)



## Ed Rogers

Landscape Construction  
and Ground Works

### Services include:

All types of Landscaping,  
Ground Works, Driveways,  
Plant Hire, Paving,  
Fencing & Decking

Experienced professional landscaping  
and ground work services for  
residential and commercial properties  
across Exeter, Mid and East Devon.

[ed-rogers.co.uk](http://ed-rogers.co.uk) | 07717 845 184



## Little Explorers Day Nursery

We are based at

Bernaville Nurseries, Cowley EX5 5EU.

Monday to Friday 7:45am-6.00pm,  
Age range from Birth to pre-school.

please contact us on 07598527713  
or Email [Littleexplorers16@mail.com](mailto:Littleexplorers16@mail.com)

## GREEN SWEEP



Your local chimney sweep. Qualified,  
professional, insured. For the very best job at  
competitive prices contact us today.

**NOW UNDER NEW MANAGEMENT!**

Make sure your chimneys are swept annually!

The Green Sweep, 12 Hawthorn Road, Crediton EX17 2DF

Tel, 01363 898047 and 07833 897324

E-mail, [tim@thegreensweep.co.uk](mailto:tim@thegreensweep.co.uk)

[www.greensweep.uk](http://www.greensweep.uk)

## Bauer Power Services 4U

Your Local Cleaning Team

### Power Washing

- \* Patios \* Decking \* Driveways \* Pathways \* Steps
- \* Moving House Cleaning \* Ovens
- \* End of Tenancy
- \* Grass Cutting \* General Garden Tidying
- \* Basic Car Washing/Valeting
- \* Caravans

Call us on 07871 329 444

For a free no obligation quote

Email : [BPServices4U@hotmail.com](mailto:BPServices4U@hotmail.com)

DBS Certified



## Sales of

Chickens, Ducks, Geese, Quail, Peafowl, Guinea Fowl, Rhea  
Pygmy goats, Sheep, Pigs, Deer and Wallabies

From our Poultry store we sell  
Poultry feed, drinkers, feeders, poultry housing.  
Poultry health supplements. Poultry treats and gifts  
Straw hay and shavings.

Raw dog food 'The farmers dog'

A range of feeds for all your small holding needs

Quail eggs, Chicken eggs

Open Tuesday – Saturday 10.30am – 5.00pm

Just pop in!

Moon Ridge Farm Ex55aa 01392 851190

[moonridgefarm.co.uk](http://moonridgefarm.co.uk)



## *Lending with Heart and Mind*

Mid Devon District Council fund a not-for-profit  
loan scheme for homeowners and landlords\*.

**We understand the expense of maintaining your  
home and we work with you to take the stress out  
of funding repairs, improvements or adaptations.**

We see you as an individual, not a credit score.  
Our knowledgeable team of advisers will guide  
you through the process of applying for a home  
improvement loan.

For a no-obligation assessment  
or more information visit

[www.lendology.org.uk](http://www.lendology.org.uk) or call 01823 461099

Heatherton Park Studios, Bradford on Tone, Taunton, TA4 1EU

\*subject to eligibility



## NEWTON St CYRES

### GOLF COURSE

## We are open

The course is a slight departure from the  
norm. Although it is totally Pay & Play,  
9 holes represents a fair  
challenge for every level of golfer.

- Pay and Play Golf
- Exciting Course
- Only 10 mins from Exeter
- Buggies Available
- On-line Booking
- Takeaway food and drink

Please call, or visit our website for directions

**Tel: 01392 851999**  
**[www.newtonstcyres.com](http://www.newtonstcyres.com)**

**Twilight  
from 2pm**

**CUSTOM BUILT 24 HOUR  
ONLINE BOOKING**



# Newton's Unsung Heroes

*From line dancing to martial arts to mahjong and lots more, the Parish Hall is at the centre of village activities. But few villagers know who the volunteers are who give up so much of their time to keep the Hall up and running?*

*Ann Quon Cordingley has been finding out.*

For Nicola Baker, it felt like the good old times again. A balmy evening, the buzz of people catching up with friends they hadn't seen for ages, and the sound of good music filling the hall.

"It was just so good to be back at a live music event again, after all this time," said Nicola. The setting was the Parish Hall on a recent Saturday night with folk singer and song writer Steve Knightley playing live to a packed Covid-compliant hall.



*Nicola Baker*

As the Parish Hall's events organiser, Nicola was responsible for organising the music evening, the first since lockdown was lifted. To ensure all went well, she had plenty of help from fellow volunteer Rosemary Chambers and her husband Nigel on the door taking tickets, and her own husband Michael to lend a helping hand.

Judging from the happy mood in the Hall, it's tempting to think that things are back to normal. But they aren't – at least not just yet. Just ask fellow volunteer Mary Long, who, as Booking Secretary, handles all the Hall's bookings.

"We thought we were going to have more bookings for the autumn and get some of the regular bookings back, but there aren't nearly as many as we anticipated," said Mary who has been handling bookings for more than 14 years.



*Nicola Baker, Mary Long and Rosemary Chambers*

Mary, along with Rosemary and Nicola, are the “golden girls” who volunteer their time to the Parish Hall to ensure that activities such as the music night occur without any hitches. As the main village venue for community activities, the Hall is used for a diverse range of activities – from ballroom dancing to line dancing, mahjong to martial arts, parties, club and societies’ meetings, seminars, classes and much more.

A registered charity, the Hall is run by a well oiled Management Committee that manages its day-to-day operations and ensures the facilities are well maintained for

users. While its bread and butter is hiring out its facilities to users, the Management Committee does organise its own functions, such as the music night for fund raising. All the Management Committee members are volunteers such as Mary, Nicola and Rosemary.

Mary turns on her computer first thing in the morning to check the emails that have come in over the past 24 hours. As Booking Secretary, she knows that her inbox could have anything from users requesting bookings, altering them or dealing with potential clashes. “It’s a daily job and not something you do once a month,” she said.

Besides bookings, she shares invoicing duties with the Treasurer and once a month does a spreadsheet of all the bookings to make them easy to track. The monthly spreadsheet is shared with the Treasurer for invoicing and the caretaker who ensures the facilities booked are Covid compliant and ready on the day.

In normal times, the Hall gets an incredible 600 to 650 bookings a year with the main hall (capacity 120 seated) and smaller club room (capacity 40 seated) booked up to three times a day. Most users are regulars on a weekly, monthly or even annual basis with one-off bookings for parties and special events.

However, Covid changed all that in March 2020. Although Covid compliant restrictions and precautions were immediately put in place by the Hall's management committee, only a few hires took place during the short periods of re-opening between lockdowns. Only the Post office remained open, for a couple of hours twice a week throughout lockdown

Even though lockdown was lifted in August, many of the Covid safety procedures remain in place and the responsibility of Kamil Ceglak, the Hall's amiable cleaner and caretaker. His job is to ensure the cleanliness and safety of the Hall during these uncertain Covid times. "I need to make sure everything is safe and sanitised and that we provide hand sanitisers and antibacterial gels," Kamil said.

That can mean spending up to two hours to get the Hall ready for a single booking and thinking ahead about what surfaces will be touched or used. "I need to make sure all the furniture is sanitised, including the tables and chairs. I need to focus on the places that people may touch such as door handles, taps on the sinks,



*Kamil Ceglak*

toilets, when they open the windows and use the handles. I need to think ahead about what people will touch, whether it's an object or parts of the building that have to be sanitised just to be on the safe side," he said. Even things like light switches, which most people use without thinking, will be sanitised.

Kamil's work doesn't stop there. Cleaning up afterwards is just as important. "We ask people to leave the furniture where it is when they have used it, so I know what they have used, and can sanitise and put them away."

It is definitely more time consuming compared with pre-Covid days, but essential. "It's important to provide an environment where people feel safe, so we do everything we can to make it safe and clean," Kamil said. Because the role of the cleaner/caretaker is so critical to the functioning of the Hall, it is a paid position. It also takes some of the pressure off the volunteers so they can focus on their own tasks.

When Rosemary moved to Half Moon from Wiltshire 15 years ago, she knew she wanted to get involved in the activities of the Parish Hall. That's when Committee Chair Roger Wilkins, who was the Treasurer at the time, asked her to be Minutes Secretary. "Roger recruited me and, in fact, he recruited all of us, didn't he?" she said, referring to Nicola and Mary.

As Minutes Secretary, Rosemary's prime role is to take minutes for the main Committee meetings, which occur three or four times a year, and send out the agenda. While she modestly says she doesn't do as much as Mary or Nicola, she is always ready to help out when the Hall organises its own events such as the recent music night, and she regularly takes part in some of the club activities and coffee mornings.

While the Hall is available for hire for most types of activities, there are a couple of no-go areas. "The only thing we turn down is if people want to use the hall for dog training or something like that," said Mary. "And we don't allow parties to be held for people between the ages of 18 and 25. That was a decision the Committee made after we'd had one or two a long time ago. This is a village full of older people, so upsetting the rest of the village is not what we want to do," she said.

Mary grew up in Kent, but moved to the village 25 years ago with her husband. “My family history is here. My father was born in Crediton, so I always wanted to live here. When my husband retired, we moved here.” Both settled into village life, getting to know the people and joining many of the events the Hall had to offer.

“You feel as if you are giving something back to the village,” said Mary. “I’ve had a wonderful life here. My husband was very happy here when he was alive. When I moved [to another house within the village], I wanted to stay in the village because I have friends here and it’s a way of giving something back to the village for what they have given me.”

Although Nicola has lived in the village for almost six years, she describes herself as the newcomer to Committee work. Before retiring, she was at the University of Exeter looking after student accommodation, student welfare and discipline before retiring.

“I’m fairly new to the village and really wanted to get involved with village life, and the Parish Hall did seem to be one of the main hubs,” she said. “I was asked if I would like to go onto the Committee and I said ‘yes’. It has sort of evolved that I have now become events organiser. So as well as being on the Committee, if we are putting anything on for the community or raising money, I tend to be involved in that and to liaise with Villages in Action,” Nicola said of the charity, which brings the arts to villages and communities in Devon.

Kamil is the new kid on the block, having joined the Hall in July this year following the unfortunate accidental death of his predecessor, Chris Barlow. Prior to that, Kamil worked as a chef for 10 years in Exeter, but, with lockdown, had to choose between furlough or something different. “So I decided to take a different path,” he said. “I’ve never been a professional caretaker, but during my days in catering as a head chef, I was responsible for opening and closing and recruiting.”

The opportunity to work at the Hall also gave him the chance to move to Half Moon where he lives with his wife. “Everyone is super nice and friendly. It’s a good feeling to know that if I need to ask for help because I



don't know a lot about this place or job, there is always someone to help me."

While the Parish Hall is a familiar landmark in the village, it wasn't always used as a Hall. The main part of the Hall was originally a cider barn that was given to the village by the Quicke family. After conversion, it was opened in 1926 by Captain Noel and Mrs Constance Quicke and has evolved over the years into the centre for community activities it is today. To keep it updated, in recent years the Committee has undertaken major improvements, including reroofing, new windows, new lighting and a new kitchen, paid for by grant money and accumulated funds. However, with income from hirings drastically down due to lockdowns, the Hall was able to survive thanks to grants from the government, the Mid Devon District Council and the Parish Council.

Spearheading the Committee's work is Roger Wilkins, an assuring and knowledgeable presence who has worked tirelessly behind the scenes for over two decades. He first became involved with committee work in 2000 as the Tennis Club representative, Treasurer from 2003 to 2013 and Chair from 2014 to the present. However, after serving for 21 years, he plans to retire from the Committee at the end of the year, with Vice Chair Roger Furniss taking over from him.

Other changes on the committee include a new President, Sandy Fleming, and Treasurer, Peter Watts. Roger feels it is the right time to step aside, knowing that he is leaving behind a strong and very capable Committee. "The thing I'm really pleased with is that I've contributed to being able to maintain and improve something that has really contributed to the village as reflected by the large number of groups organisations and businesses that use it. It's been evolution rather than revolution," Roger said.

Roger and other Committee members should rightly feel proud of their hard work. The diversity of activities, users and interests that use the Hall shows it has become such an essential part of community life. "I volunteer because I want this Hall to be here," said Rosemary.

"I think it is the centre of things," said Mary. "I know the coffee mornings were very much missed during Covid. A lot of people live on their own and the Hall brings people together."

“I think lots of people don’t get out and socialise a great deal, so when there are events in the village, especially coffee mornings, people like to come along and sit down and have a chat,” said Nicola. “It’s all the more important that we can make it what the community wants us to make it. So with the history group, gardening club, ballroom dancing – there is such a wide range of events happening that there has got to be something that appeals to everyone.”

“You’d like to think that if people move to a village, they want to be involved in village life. You can be totally anonymous in a city, but if you move to a village, then it’s a community and it’s good to get involved.” And that’s precisely what the Parish Hall’s unsung heroes are.

### **Parish Hall Committee of Management**

Sandy Fleming, President; Roger Wilkins, Chair; Roger Furniss, Vice Chair; Peter Watts, Treasurer; Nicola Baker, also Church Representative Member; Christine Burrows; Kamil Ceglak, Caretaker; Rosemary Chambers, Minutes Secretary; Julie Furniss; Mary Long, Booking Secretary; Lorraine Mitchell; Gina Quicke, Parish Council Representative Member; John Salter

## **UPTON PYNE & DISTRICT GARDEN CLUB**

Monday 18<sup>TH</sup> Oct. @ 7.30 pm in Village Hall



**'FEEBERS GARDEN & GARDENING ON CLAY SOIL'**

*Come and join us !*

**EVERYONE WELCOME**

**Only £1**

**ADMISSION**

a talk by **MIKE & EDNA SQUIRES**

**FEEBERS COTTAGE GARDEN**



**Raffle**

**Nov. 15<sup>th</sup> Rebecca Flintham - Water, Water everywhere!**

# Free Range Oven Ready Turkeys and Geese For Christmas



**\*Traditional Free Range Bronze Turkeys**

**\*Free Range Geese\***

**Tel; 01392 841552 / 07889 825796**

**\*Order Online [www.exeterturkeyfarm.co.uk](http://www.exeterturkeyfarm.co.uk)**

**\*Home Delivery available\***

**Mike & Tim Leach, Glebelands Farm, Upton Pyne, Exeter EX5 5JA**



**Sustainable  
Crediton**

**Blackberry and Apple  
Fool [4 - 6 portions]**

1 lb (500g) peeled and cored cooking apples

½ lb (250g) blackberries

2 oz (50g) sugar

squeeze of lemon juice

¼ pint (150ml) lightly whipped double cream

Cook the fruit in a saucepan with the lemon juice and sugar until soft. Rub the cooked fruit through a sieve. When cold, blend with cream. Spoon into serving bowls or glasses and chill in the fridge before serving. Garnish with blackberries and a mint leaf. A rich buttery shortbread is good with this fool.

Paul Cleave

# NEWTON ARBORETUM



COFFEE MORNING

SAT 9 OCT at

NSC Parish Hall

Stalls, coffee, cakes and company!

10.30 to 12.00

*All welcome. Proceeds for improving the  
Arboretum*

# Newton St Cyres 200 Club

The draw for September took place at the Coffee morning on Saturday 11 September and the winners were:

No. 340	D Finning	£10.00
No. 187	J & M Snell	£10.00
No. 58	J Bailey	£10.00
No. 182	R & C Nicholls	£10.00
No. 178	J Quicke	£10.00

If anyone would like a number just let me know. There are a few spares

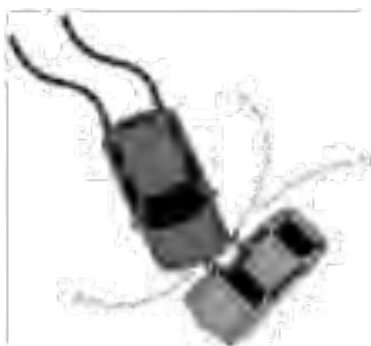
The Club is registered through the Mid Devon District Council Licensing Department as a Small Society Lottery under the Gambling Act 2005

Jane

01392 851148

## Have you seen dangerous driving on the A377?

Newton St Cyres Parish Council is keeping a log of dangerous driving on the A377 through the parish. If you witness a dangerous incident then please email



[parishclerk@newtonstcyres-pc.gov.uk](mailto:parishclerk@newtonstcyres-pc.gov.uk)

with details of the date, time, location and a brief description of what happened. The log will be posted on the Parish Council website and will be shared with the Police and Devon County Council to hopefully help provide evidence of the need for greater speed enforcement.

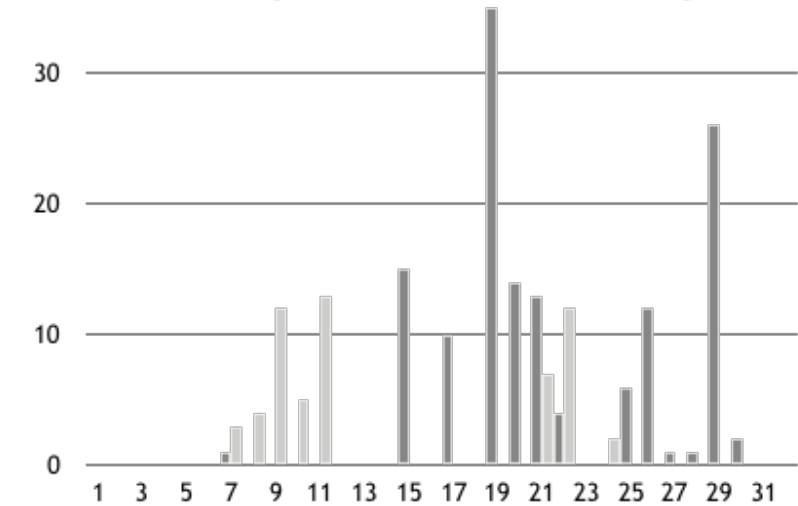
# The Weather

in Newton St Cyres

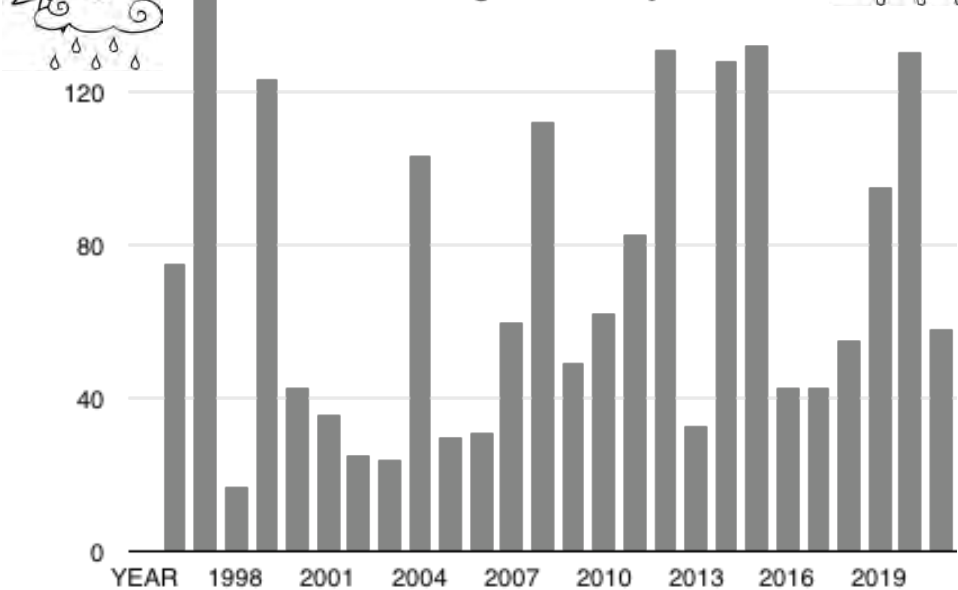
■ Rainfall in NSC in August 2020    ■ Rainfall in NSC in August 2021



We are grateful to James Walters and his family, especially his granddaughter Alice for providing us with regular details of the rainfall in Newton St Cyres.



■ Rainfall in August annually since 1996



## CREDITON CAR & M.O.T. CENTRE

776076 (SALES)

01363 772515 (SERVICE)

[www.creditoncarcentre.co.uk](http://www.creditoncarcentre.co.uk)

HONDA SPECIALIST

QUALITY NEW & USED CARS

D. WORDEN & A. DAFTERS



## COMPUTERS

*Mended - Upgraded - Replaced*

Printers, wi-fi, networking, broadband -  
supplied, installed, checked, changed,  
demonstrated.

Changeover service to help you, your programs  
and your data move to a new computer.

Local, friendly, professional, unbiased.

Home visits or remote link-ups, including  
evenings or weekends, to suit you.

Contact Ian Gunter on 01392 851841

Exeter's Traditional Family Independent  
Funeral Directors For Over 100 Years

## M. Sillifant & Sons

Martin Sillifant & Son

*A phone call will obtain our personal attention*

**01392~272688**



19-20 Holloway Street,  
St Leonard's,  
Exeter. EX2 4JD



[www.sillifantandsons.co.uk](http://www.sillifantandsons.co.uk)

# JTA

## Building & Plastering Exeter

**Quality Building at Affordable Prices**  
**All aspects of building work undertaken**

**Telephone: 07764 938244**

**Evening: 01363 866060**

**Email: [jamieacton@hotmail.com](mailto:jamieacton@hotmail.com)**

# **Do you need any help in these times?**

**You are not alone**

**For any type of help contact Damien Hodge  
on 851111 or email  
damienhodge@newtonstcyres-pc.gov.uk or  
contact your neighbourhood watch  
deputy. They are here for you.**

## **Neighbourhood Watch Deputies**

Tim Sedgwick	Godolphin Close	2	851223	twsedgwick1@supanet.com
Sue Gee	Church Area	Glebe House	851164	asgee@btinternet.com
Tom Dowle	Court Orchard	24	851704	tomdowle@live.co.uk
Chris Lee	Langford Road	Greenlands	851280	
Mike Kersey	Half Moon	12	851603	
Sandy Fleming	Newton House	12	851646	afleming12@btinternet.com
Wayne Meeton	Norton	Glenacre Sweetham	851954	wayne@wvmstudio.com
Derrick Rhydderch-Evans	Pump Street	Old Beams	851443	derrickrevans369@btinternet.com
David Vallance	Sand Down Lane	Manesty	851266	davidvallance2@icloud.com
Jacqui Ward	Smallbrook	2 Broadgate Cottage	851918	Jacquiward30@yahoo.co.uk
Jill Hawksley	Sweetham	Station Cottage	851269	peterbrew@aol.com
Clive Wootton	West Town	4 Meadowlands	851428	hollywallydoda@outlook.com
Alan Hancock	Woodlands		851744	
Damien Hodge	Tytheing Close	2	851111	damienhodge@newtonstcyres-pc.gov.uk
Geoffrey Jackson	"The Village"	Shaplands Cottage	851551	megalops@btinternet.com

*For help, further information or to submit a report please go to the website or contact the  
NSC Parish Council Co-ordinator Damien Hodge tel: 01392 851111  
email: damienhodge@newtonstcyres-pc.gov.uk*



# Newton St Cyres Parish Hall

Tues 09.00 a.m. to 11.00 a.m. & Thursdays 12.00 noon to 1.30 p.m.

with full



Service

*now selling some household requisites, confectionery and magazines*

Access by gate at far end of the Hall (coming from A377)

## **JOSH KENSHOLE**



OFFERING ALL ASPECTS OF GARDEN  
MAINTENANCE AND TREE SURGERY

GET IN TOUCH NOW FOR A FREE  
QUOTE...

mobile - 07925429324

email -

[jkensholegardenmaintenance@gmail.com](mailto:jkensholegardenmaintenance@gmail.com)

[facebook-jkensholegardenmaintenance](https://www.facebook.com/jkensholegardenmaintenance)

[instagram-jkensholegardenmaintenance](https://www.instagram.com/jkensholegardenmaintenance)

Covered by all  
major insurers



Established  
over 25 years

## **CREDITON & EXETER OSTEOPATHS**

Back & Neck pain  
Joint problems & Sports Injuries

**100 High Street, Crediton, EX17 3LF**

**01363 774175**

**Notaries House, Chapel St., Exeter EX1 1AJ**

**01392 213899**

## **CREDITON COMPLEMENTARY HEALTH CENTRE**

**Qualified practitioners in:**

Acupuncture & Chinese Herbal Medicine,  
Alexander Technique, Aromatherapy,  
Counselling, Cranial Osteopathy, Healing,  
Homeopathy, Manual Lymphatic Drainage,  
Nutritional Therapy, Osteopathy, Physiotherapy  
(bodywork), Reflexology

**100 High Street, Crediton, EX17 3LF**

**01363 774175**

*Every Child  
Every Chance  
Every Day*

# Newton Nippers

## Preschool

**Ages 2 – 5 years**

We provide high quality Care and Education in a safe and stimulating environment for all 2-5 year olds.



Sessions available Monday to Friday 9.00am to 3.15pm  
30 hour entitlement and Childcare Vouchers accepted.

Contact: Newton St Cyres Primary School

Tel: 01392 851267

Email:

[newtonadmin@exevalleyfederation.org.uk](mailto:newtonadmin@exevalleyfederation.org.uk)

After School  
Club!  
Available  
until 5pm

# **The Parish Church of St Cyr and St Julitta**



**Newton St Cyres  
Church.**

**The Church is  
open for**

**Private  
Prayer**

**on Wednesdays from 10 am - 4 pm**

## **HARVEST FESTIVAL**

**Newton St Cyres Church**

**is celebrating Harvest**

**on 17<sup>th</sup> October**

**with a service at**

**11.15am**

**Lunch at 12.30 in the Parish Hall**

**£10 per head**

**Please book by 12<sup>th</sup> October with**

**Linda Smith: 851128 or Sue Browne: 851460**

**Pay on the day**

**EVERYONE WELCOME**

**to either and both**

## Thunder and Rainbows

“Why?” This appears to be my four-year-old daughter’s favourite word at the moment. Answering ‘why’ can be fun, interesting, difficult, frustrating and downright annoying at times! However, I do love her curiosity, her desire to learn and understand the world around her, and I never want her to lose that.

God created us with curious, questioning minds. He gave us the capacity to learn, create, explore and understand our world. The question ‘why’ has helped humans to create incredible wonders, to find cures to diseases, explore the depths of the ocean and the vastness of space. While we do not know everything and still have so much to learn and discover, our curiosity drives us to develop and grow.

The last 18 months or so have been challenging for a lot of people, for our country and the wider world. If you are anything like me, you will have questioned ‘why’ (either out loud or quietly to yourself) too many times to count. ‘Why’ can be a desperate question and a despairing question. Sometimes, ‘why’ is the only word we can manage to utter in moments of heart ache. It can be hard to understand how life can give us such joy and also bring such tragedy.

One of my favourite song writers, Martyn Joseph, poses the question: “Why; thunder and rainbows from the same sky?” For me, there is a certain beauty to this. Just as the sky produces both thunder and rainbows, so can we be filled with paradox.

We all have shadow places; those parts of ourselves we don’t like, that we don’t let any or many people see. The times we get it wrong; when we are selfish, rude, unforgiving, spiteful. We also have that bright, shiny parts of ourselves; the parts we like and are proud to show. The times we are kind, thoughtful, generous, loving. Do you know what? God loves us in all our shadowy, bright, paradoxical selves! While He wants us to be our best selves, He meets us in our darkness and in our light. He sees us, He knows us, He loves us.

Why? Well, He is our Heavenly Father, He made us. If we in our humanity and our brokenness can love our parents, children, friends, partners, family members, how much more gloriously can God, in all His perfection, love us? The Gospel of John gives us this amazing reassurance: “For God so loved the world that he gave his one and only Son, that whoever believes in him shall not perish but have eternal life. <sup>17</sup>For God did not send his Son into the world to condemn the world, but to save the world through him.” (John 3: 16-17)

So, why do we have thunder and rainbows from the same sky? There is a beauty in it, and it demonstrates that even on our darkest days, there is light and hope, and God is there to hold and love us.

Alexandra Berkeley  
Newton St Cyres  
[www.newtonwonder.net](http://www.newtonwonder.net)

## SERVICES & INFORMATION OCTOBER 2021

The Netherexe Parishes - A Mission Community in the Diocese of Exeter

**Please note these services are proposed for October 2021 and**

**may change due to Government Restrictions and COVID-19 tiering.**

**Please check for current information by visiting our website at [www.netherexe.org](http://www.netherexe.org)**

### Sunday 3 October Trinity 18

09:30 am	Holy Communion	[CW]	Thorverton	David Francis
10:00 am	Harvest Festival Service		Brampford Speke	Lay Led
11:15 am	Informal Service		Cadbury	Lay Led
11:15 am	Family Harvest Festival Service		Rewe	Lay Led
03:00 pm	Harvest Festival Service		Huxham	Lay Led & JH

### Sunday 10 October Trinity 19

10:00 am	Harvest Festival Service		Thorverton	Lay Led & LF
10:00 am	Baptism Service		Newton St Cyres	JH
11:15 am	Holy Communion	[CW]	Upton Pyne	GC

### Sunday 17 October Trinity 20

09:30 am	Open Door		Zoom/TBC*	LF
09:30 am	Holy Communion	[CW]	Brampford Speke	JH
11:15 am	Holy Communion	[CW]	Cadbury	KR
11:15 am	Harvest Festival Service		Newton St Cyres	Lay Led
05:00 pm	Holy Communion	[CW]	Stoke Canon	JH

### Sunday 24 October Last Sunday after Trinity

09:30 am	Holy Communion	[CW]	Newton St Cyres	TL
10:00 am	Harvest Festival Service		Upton Pyne	Lay Led

### Sunday 31 October 4<sup>th</sup> Sunday before Advent

11:15 am	Holy Communion	[CW]	Stoke Canon	MSS
----------	----------------	------	-------------	-----

Abbreviations: CW = Common Worship BCP = Book of Common Prayer

**Evening Prayer:** Every Tuesday 6:00 pm in Rewe Church

**Some Churches are still operating on a booking system for Covid safety. Please make every effort to contact the following people if you wish to attend services at the following churches:**

<b>Rewe</b>	Sheila Newton	01392 860082	<a href="mailto:rewe.nativity@gmail.com">rewe.nativity@gmail.com</a>
<b>Stoke Canon</b>	Valerie Mills	01392 841659	<a href="mailto:valeriehandfordmills@gmail.com">valeriehandfordmills@gmail.com</a>
<b>Thorverton</b>	Royston Kershaw	01392 860419	<a href="mailto:thorvertoncw@gmail.com">thorvertoncw@gmail.com</a>

\*Open Door: <https://zoom.us/j/92093317053?pwd=bjhzcGRrSTQ2TW9sODFWU2dLU204QT09>

To join by telephone: **Ring 0203 901 7895 Meeting ID: 920 9331 7053 Passcode: 117621**

This information will also be available via our website at [www.netherexe.org](http://www.netherexe.org) see "Please Note" section of the homepage

### Who's Who .....? Abbreviations Key

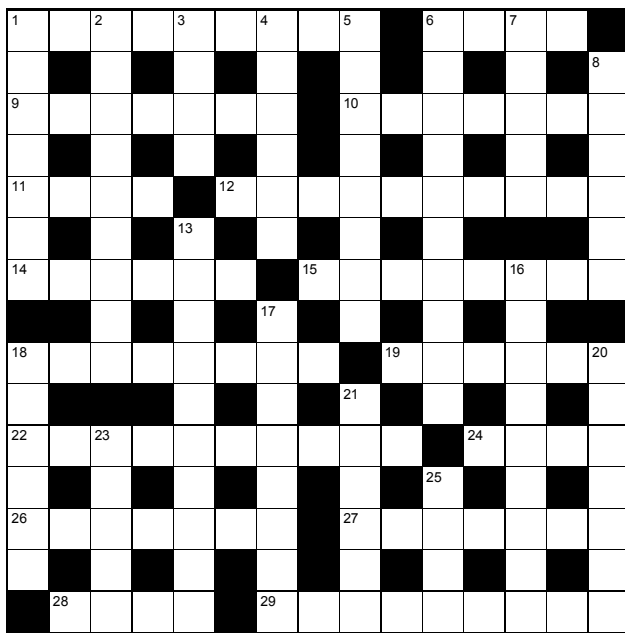
JH	Revd Julia Hocking	LF	Laura Ford
TL	Revd Tony Lane	KR	Revd Preb Kathy Roberts
GC	Revd Preb Graham Cotter	MSS	Revd's Michael & Sharon Simpson
TBC	To be confirmed.		

For more information about the Netherexe Parishes please see [www.netherexe.org](http://www.netherexe.org) or contact:

Mrs Juliette Lea [Administrator]	Mr Peter Shepherd [Administrator]
Hours & Days TBC	Monday & Wednesday [09:30 – 13:30]
Tel:	Tel: 07551 844321
Email: <a href="mailto:administration@netherexe.org">administration@netherexe.org</a>	Email: <a href="mailto:administration@netherexe.org">administration@netherexe.org</a>

Correspondence: The Netherexe Parishes, Church Office, St Mary Magdalene Church, Stoke Canon, Exeter, EX5 4AS

# Cryptic Crossword



## ACROSS

- 1 Harp on about taking a long time to provide place for unfortunate children (9)
- 6 Leaders of western Europe accept king is powerless (4)
- 9 Angrily I scold student at start of year (7)
- 10 One giving kiss or punishment (7)
- 11 Top champion nets millions (4)
- 12 Unfortunately star has men pestering (10)
- 14 Bergman's part in fighting Marxism (6)
- 15 Describes bad beer and a gin very badly (8)
- 18 Two lags will discover what aircraft leaves behind (8)
- 19 Fool is to show derision about good man (6)
- 22 Be clearly bothered about carbon, being environmentally friendly (10)
- 24 Some timber includes northern pine (4)
- 26 Loving self-introduction by Conservative? (7)
- 27 Old vehicle needs new tachometer – right one is installed (7)
- 28 Shows affection for dogs perhaps (4)
- 29 Losing her head, Beryl met ex – worried? Very! (9)

## DOWN

- 1 Paperwork from old equipment given to mate in Paris (7)
- 2 Quietly replaced a migrant bird (9)
- 3 On returning, some remained anchored in port (4)
- 4 On vacation touring New York no matter what (6)
- 5 Really happy with heads of English commerce still (8)
- 6 We harvest when ordered, gathering nothing at all (10)
- 7 Kelvin gets stuck into lean cooked joint (5)
- 8 Quite attractive (6)
- 13 Unpredictable cop is a cur, I fancy (10)
- 16 Confirm writer is English (9)
- 17 Some memory of a bit to eat, say, after concert (8)
- 18 Cornflakes perhaps mentioned in a row (6)
- 20 Correctly and cheerfully ignoring leader (7)
- 21 Bring out legal drug first (6)
- 23 Stop opening of Comic Relief (5)
- 25 Proscribe oriental poison (4)

Set by Alberich

# Sudoku

All you have to do is fill in the squares so that each row, each column and each square contain all the numbers from 1- 9.

		1					3	9
					3	1		
	3			9	7	4		2
						8	9	
		7				5		
	2	9						
9		3	5	6			8	
		4	2					
1	8					9		

© Web Sudoku 2021 - [www.websudoku.com](http://www.websudoku.com)

## Solution to the September 2021 Cryptic Crossword

1	B	U	M	P		3	N	O	T	5	A	S	6	C	R	7	A	P	
	A		I				B		B		L			L		8	U		
9	R	O	S	E		10	V	E	G	E	T	A	R	I	A	N			
	E		I			11	B		I		L		R		E		I		
12	L	A	N	G	U	I	S	H			13	P	I	C	N	I	C		
	Y		F		R		A				N						O		
	14	L	O	S	E	O	N	E	15	S	T	E	M	16	P	E	R		
17	I		R		A		C		A		T		E			N			
18	C	O	M	P	U	T	E	R	D	A	T	I	N	G					
	E					C				D		I		S		19	E		
20	L	U	21	S	T	R	E		22	F	L	A	S	H	I	N	G		
	A		I		A		23	C		E		T		O		G			
24	N	I	G	H	T	C	L	U	B	S		25	A	N	O	N			
	D		M		I		A		A					E		O			
	26	W	A	T	C	H	D	O	G	S		27	B	R	A	G			

# WHO'S WHO IN THE VILLAGE

<b>Priest-in-Charge</b>	To be appointed	
<b>Church Wardens</b>	Sue Browne, 1 Glebelands, Sand Down Lane	<b>01392 851460</b>
<b>PCC Hon Secretary</b>	Pita Burt <a href="mailto:pitaburt@gmail.com">pitaburt@gmail.com</a>	<b>01392 851410</b>
<b>PCC Hon Treasurer</b>	Brian Please, Compass House, Sand Down Lane	<b>01392 851507</b>
<b>Electoral Roll Officer</b>	Jen Holt, 21 Woodlands	<b>01392 851521</b>
<b>Tower Captain</b>	Mary Quicke - <a href="mailto:mary@quickes.co.uk">mary@quickes.co.uk</a>	<b>07729 844945</b>
<b><u>DOCTORS (Crediton)</u></b>	<b>New Valley Surgery</b> , - Drs Hall, Saunders, Harris, Ziegler, Nicholls, Davies and Spriggs	<b>01363 772263</b>
	<b>Chiddenbrook Surgery</b> - Drs Twomey, Braddick, Griffiths, Kirwan and Parker	<b>01363 772227</b>
<b><u>NEWTON WONDER MAGAZINE &amp; WEBSITE</u></b>	Editor – Peter Hawksley Email: <a href="mailto:editor@newtonwonder.net">editor@newtonwonder.net</a>	<b>01392 851269</b>
<b><u>PARISH COUNCIL</u></b>	Chairman - Jim Enright Clerk - Jane Hole	<b>01392 851859</b> <b>01392 851148</b>
<b><u>PARISH HALL</u></b>	Chairman – Roger Wilkins Booking Sect - Mary Long, - <a href="mailto:maryglong@btinternet.com">maryglong@btinternet.com</a>	<b>01392 851337</b> <b>01392 851624</b>
<b><u>PRIMARY SCHOOL</u></b>	Head of Teaching – James Akhurst Administrator - Maxine Pople	<b>01392 851267</b> <b>01392 851267</b>
<b>Newton Nippers Pre-School</b>	Contact the school	<b>01392 851267</b>
<b>Newton Nappies Toddler Group</b>	Emily Rickard	<b>01392 851899</b>
<b><u>RECREATION CLUB</u></b>	Chairman - Tony Lewis, 80 Wrefords Lane, Exeter Booking Secretary - Mrs Wendy Lewis, 80 Wrefords Lane, Exeter	<b>01392 432287</b> <b>01392 432287</b>
<b>Newton Revels</b>	Chairman - Eric Fee - <a href="mailto:ericwfee@hotmail.com">ericwfee@hotmail.com</a>	<b>01392 851595</b>
<b>Art Group</b>	Jenny Hallam, <a href="mailto:jennyhallam6@gmail.com">jennyhallam6@gmail.com</a>	<b>7787383658</b>
<b>Neighbourhood Watch</b>	Damien Hodge, 2 Tytheing Close <a href="mailto:damien.hodge@centraxgt.com">damien.hodge@centraxgt.com</a>	<b>01392 851111</b>
<b>Footpath Warden</b>	Steve Parker	<b>01392 851505</b>
<b>Cancer Research UK</b>	Jean Wilkins, Coldharbour, Sand Down Lane	<b>01392 851337</b>



<b>Community Police</b>	PCSO Nicola Payne, Police Station, Crediton Nicola.payne@devonandcornwall.pnn.police.uk	<b>Dial 101</b>
<b>District Councillor</b>	Graeme Barnell, Halses, West Town Rd. Email: <a href="mailto:gbarnell@middevon.gov.uk">gbarnell@middevon.gov.uk</a>	<b>01392 851308</b>
<b>County Councillor</b>	Margaret Squires	<b>01363 84337</b>
<b>Local M P</b>	Mel Stride <a href="mailto:mel.stride.mp@parliament.uk">mel.stride.mp@parliament.uk</a>	<b>01392 823306</b>
<b>Football Club</b>	Mark Smaldon	<b>7733455177</b>
<b>Friends of NSC Station</b>	Chris Southcott	<b>01392 851569</b>
<b>Luncheon Club</b>	John Salter, Hill Park	<b>01392 851346</b>
<b>Mah Jong Club</b>	Geoff Jackson <a href="mailto:megalops@btinternet.com">megalops@btinternet.com</a>	<b>01392 851551</b>
<b>Newton Ramblers</b>	Rosemary Chambers	<b>01392 851400</b>
<b>Tennis Club Secretary</b>	Laura Leigh	<b>01647 24259</b>
<b>Twinning</b>	Lorraine Mitchell	<b>01392 851596</b>
<b>Upton Pyne PC</b>	Jacqui Ward- <a href="mailto:jacquiward30@yahoo.co.uk">jacquiward30@yahoo.co.uk</a>	<b>01392 851918</b>
<b>Young Farmers</b>	Will Ayre (Chairman) <a href="mailto:willayre@hotmail.co.uk">willayre@hotmail.co.uk</a>	<b>7964286831</b>
<b>Archery</b>	Alison Couling	<b>01392 841282</b>
<b>Gardening Club</b>	Jane Timlett	<b>01392 851361</b>
<b>Honky Tonks Line Dancing</b>	Paula Benford	<b>01392 210830</b>
<b>History Group</b>	Jean Wilkins	<b>01392 851337</b>
<b>Table Tennis</b>	Roger Wilkins	<b>01392 851337</b>
<b>Friends of the Arboretum</b>	Roger Wilkins	<b>01392 851337</b>
<b>Crediton Citizen's Advice</b>	Adviceline (10.30 - 3.30)	<b>03444 111444</b>

The **NEWTON WONDER** is delivered within the Parish at a charge of only **£5.00** per year.

Please contact Gerry Radford on 01392 851504 or email  
[paul.radford3@btinternet.com](mailto:paul.radford3@btinternet.com).

If you move away it can be posted for an additional £7.50 p.a.

To pay online/by BACS please ensure that payment is made to  
"Newton Wonder Community Magazine"

Sort Code: 30-93-14

Account Number: 05351394

The **Newton Wonder** team consists of Peter Hawksley and Peter Cordingley (editors). Daphne Clague, Richard Nicholls and Gerry Radford.

**Articles for Publication:** Please email to Peter Hawksley, editor@newtonwonder.net. Tel: 01392 851269

**Notices of Local Events:** Please email to Peter Hawksley as above.

**Local voluntary Village events are included free of charge.**

**Advertisements:** Please contact Richard Nicholls at richnick@outlook.com. Tel: 01392 851877. Please include your business name, address, ad-size required and number of insertions. **Payment in advance:** cheques made payable to **Newton Wonder Community Magazine** and sent to Richard Nicholls, Landown, Sand Down Lane, Newton St Cyres, EX5 5DE.

**All items for publication must arrive by the 15th of the month before publication.** Please send by email wherever possible otherwise they should be sent to the Editor at Station Cottage, Newton St Cyres EX5 5AS

We aim to distribute the **Newton Wonder** at the beginning of the month but this cannot be guaranteed. It is recommended, therefore, that events taking place early in the month be advertised the previous month.

The **Newton Wonder** is delivered to local households and businesses at an annual charge of £5. Additional copies can be purchased from the Post Office/Village Store.

#### Advertising Rates for the Newton Wonder

	1 Year	Colour
Small (approx. 73mm x 46mm)	£30.00	£40.00
Quarter Page	£60.00	£70.00
Half Page	£100.00	£120.00
Full Page	£200.00	£200.00

The editorial team of the **Newton Wonder** does not necessarily agree with the views of contributors contained in their published articles. This is a **community magazine** and it is our policy to print reports, articles and submissions that might be of interest to the community - provided that we have sufficient space to do so and they are not libellous in content.

Printed by Community Magazine Printing, Northmoor, Whitstone, Holsworthy, EX22 6TD.

Tel:-01288 341617 or 07784 008471.

Email:- printroom@communitymagazineprinting.co.uk

# SEASONED LOGS

From sustainable  
woodland management

Suitable for

**OPEN FIRES - WOODBURNERS**

**CHIMENEAS - FIREPITS**

Typical moisture content range 10-25%

Can be tested on delivery.

Supplied loose tipped or in a ventilated bulk bag.

## PRICES

**FULL LOAD** loose tipped **£150** approx 2.5m<sup>3</sup>

**HALF LOAD** loose tipped **£85** approx 1.25m<sup>3</sup>

**VENTILATED BULK BAG £50** approx 0.625m<sup>3</sup>

**KINDLING £3** per net when ordered with logs

All prices include vat @ 5%

Bulk bags can be wheeled into your shed/garage etc.  
thereby avoiding the need to stack them.

Minimum access width (for pallet truck) 1.5m/5ft.

**Martin Newbery Tel: 07967 219559**



# Belluno

Italian Restaurant, Bar & Grill

Authentic Italian  
Food freshly  
prepared and  
cooked in our  
kitchen

\*

All food sourced  
locally

\*

Two Course  
Lunch  
Monday to  
Friday - £13.95

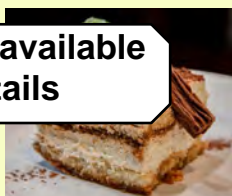
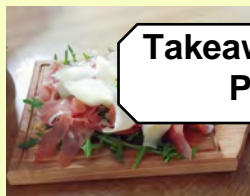
\*

Open from 12  
noon to 10 pm

\*

Tel: 01392 851811

Takeaway and delivery available  
Please ring for details



Beautiful kitchens, *beautifully made.*



**ASHGROVE**  
KITCHENS LIMITED

Call 01363 773533 • [www.ashgrovekitchens.co.uk](http://www.ashgrovekitchens.co.uk)

